

*Class of 2012*

# Handbook



The College of Arts and Sciences  
University of Pennsylvania  
120 Claudia Cohen Hall  
249 South 36th Street  
Philadelphia, PA 19104-6304  
phone 215.898.6341 | fax 215.573.2023  
college@sas.upenn.edu  
www.college.upenn.edu/

Please note: Prior to the summer of 2008,  
Cohen Hall was named Logan Hall.

# TABLE OF CONTENTS

---

## Introduction

---

i	Introduction
1	Navigating the College Website
2	Additional Websites of Interest
3	Academic Calendar
4	Welcome from the Dean of the College
5	From the Dean of Freshmen
5	Academic Integrity
6	The Mission of the College

## The College Curriculum

---

7	Overview
8	Foundational Approaches
9	The Sectors
9	The Major
9	Free Electives
9	Policies Governing the College Curriculum

## Academic Options

---

10	Foreign Language Study
11	Writing and Public Speaking
11	Majors, Minors, Degree Options
12	Careers in Medicine
12	Study Off Campus
13	Research

## Academic Advising

---

14	The College Advising System
14	Student Responsibility in the Advising Program
14	Confidentiality
15	Pre-Major Advising
15	Peer Advisors
16	The College Office
16	Advisors in the College Office
16	Advising for Benjamin Franklin and University Scholars
16	Penn InTouch
17	College Houses
18	Academic Planning Worksheet

## Advanced Placement

---

19	International Exams
19	Pre-College Credit
19	G.C.E. Advanced A-Level Exams
20	Advanced Placement Equivalence
21	International Baccalaureate Policy
22	A.P. Physics
22	A.P. Mathematics
22	A.P. Biology
23	A.P. Chemistry
24	Language Placement

## First-Semester Courses

---

25	Resources for Choosing Courses
25	Courseload
25	Freshman Seminar
25	Mathematics
25	Language Course
26	Writing Seminar
26	Academic Exploration

## Registration

---

26	Advance Registration
26	Course Selection Period
26	Preparing for First-Semester Advance Registration
27	Using Penn InTouch

## Resources and Support Services

---

28	Penn Libraries
28	Advising and Mentoring
29	Learning and Study Skills
29	Subject Tutoring
29	Research
30	Health Services
30	Post-Graduate Preparation

## Departments and Programs

- 32 Departments and Programs
- 46 Credits Needed for Graduation by Major

## General Policies and Procedures

- 48 Class Standing
- 48 Academic Recognition
- 49 Athletic Eligibility
- 49 Academic Standing
- 50 Leave of Absence
- 51 Tuition Refund
- 51 Transfer Within the University

## Policies Governing the Curriculum

- 52 Foundational Approaches
- 53 Sector Requirement
- 54 Major Requirement
- 54 Free Electives

## Policies Governing Registration, Courses and Grades

- 55 Registration Holds
- 55 Course Selection
- 55 Dropping a Course
- 55 Withdrawal from a Course
- 56 Retaking a Course
- 56 Courseload
- 57 Auditing a Course
- 57 Class Attendance
- 57 Secular and Religious Holidays
- 57 Final Examinations
- 58 Grading System
- 58 Pass/Fail Grade

- 59 Incomplete Grades
- 59 Change of Grade
- 60 Grade Point Average
- 60 Course Problem Notices
- 60 College of General Studies Courses
- 61 Graduate Courses
- 60 Non-College Courses
- 60 Pre-College Courses

## Policies Governing Academic Options

- 61 Credit Away
- 61 Internships
- 62 Minors
- 62 Study Abroad
- 62 Dual Degree
- 63 Submatriculation

## Policies Governing Graduation

- 64 Degree Requirements
- 64 Credits for Graduation
- 64 Grade Point Average
- 64 Major Certification
- 64 Residency Requirement
- 64 Petitions

## Index

# INTRODUCTION

## About This Handbook

There is much to do as you prepare for your first semester at Penn. In order to help you begin your academic career on the right foot, the College has produced this handbook, which is meant to be used in conjunction with the College website.

Read the entire handbook to get an overall picture of your academic opportunities and obligations, paying particular attention to the sections designed to help you with first semester course selection and registration.

## The College Website: [www.college.upenn.edu](http://www.college.upenn.edu)

The College website is an authoritative source of information on academic options, events, deadlines, requirements and support services. We suggest you browse through the site during the summer before coming to campus, paying particular attention to:

<a href="http://www.college.upenn.edu/freshmen/">www.college.upenn.edu/freshmen/</a>	Resources for incoming freshmen
<a href="http://www.college.upenn.edu/curriculum/2010/">www.college.upenn.edu/curriculum/2010/</a>	An overview of the College curriculum
<a href="http://www.college.upenn.edu/majors/depts.php">www.college.upenn.edu/majors/depts.php</a>	Departments and programs offering majors
<a href="http://www.college.upenn.edu/policies/">www.college.upenn.edu/policies/</a>	An index of College policies and procedures*
<a href="http://www.college.upenn.edu/support/">www.college.upenn.edu/support/</a>	An index of academic, health and support services available to College students

\* College policies and procedures occasionally change. These changes are reflected immediately on the College website. Please retain this handbook as a record of policies and procedures in place for the Class of 2012. If you find disagreement between this handbook and the information on the College website, please consult with an academic advisor.

## Navigating the College Website: [www.college.upenn.edu](http://www.college.upenn.edu)

The three-tiered navigation system allows viewers to scan topics deep within the site.

College Site A-Z

Site Search

Quick Links

Links in this drop-down menu go to some of the pages and sites most visited by College students.

Notes For

By selecting "Incoming Freshmen," first-year students can find information to help them keep on track for their first semester at Penn.

Check "Reminders" for notices about programs and resources of interest to College students.

Check for events presented specifically for College students and for the academic calendar.

The screenshot shows the homepage of the College of Arts & Sciences website. At the top, there is a header with the college's name and logo, and a navigation bar with links like 'About the College', 'College A-Z', 'SAS Home', 'Penn Home', 'Penn A-Z', and 'Contact Us'. Below this is a search bar. A main navigation menu lists various categories: Curriculum & Requirements, Major & Minors, Academic Options, Advising & Support, Course & Registration, Policies & Procedures, Honors & Awards, Research & Internships, Study Abroad, Writing & Speaking, Language Study, Off Campus, Degree Program, and After Graduation. A 'Quick Links' drop-down menu is open, showing options like 'Incoming Freshmen', 'Sophomores', 'Juniors', 'Seniors', 'transfer students', 'parents of college students', and 'pre-major advisors'. A 'Notes For' section is also visible, with a 'Notes For' dropdown menu. A 'Reminders' section provides updates on graduation dates and deadlines. An 'Upcoming Events' section lists events like 'Race, History & Hoops (Emerging Scholar Talk)', 'University Baccalaureate', 'College Graduation Ceremony', 'University Commencement', and 'First day summer session'. A 'View Academic Calendar' link is also present.

On pages within the site, pay particular attention to related links.

The screenshot shows the 'Class of 2012' page. The header is similar to the homepage, with the college's name and logo, and a navigation bar. A search bar is also present. The main content area is titled 'Class of 2012' and includes a welcome message from the Dean of the College of Arts and Sciences. Below this, there are several links and descriptions: 'The Curriculum' (The requirements and electives forming the framework of a College degree), 'Freshman Timeline' (Step by step guide for freshmen), 'Academic Blog and Questionnaire' (This questionnaire helps facilitate the first conversation with the pre-major advisor about academic goals and options), and 'Summer Advising' (The first conversation with the pre-major advisor prior to registration for classes). A 'Related Links' section on the left lists 'The College Office', 'Index of Support Services', and 'New Student Orientation'. A 'Quick Links' dropdown menu is also visible, showing options like 'Incoming Freshmen', 'Sophomores', 'Juniors', 'Seniors', 'transfer students', 'parents of college students', and 'pre-major advisors'. A 'Notes For' section is also visible, with a 'Notes For' dropdown menu.

## Additional Websites of Interest

### A-C

Advanced Placement  
[www.college.upenn.edu/freshmen/ap.php](http://www.college.upenn.edu/freshmen/ap.php)

Alcohol Policy Initiatives  
[www.vpul.upenn.edu/alcohol/](http://www.vpul.upenn.edu/alcohol/)

Athletics  
[www.pennathletics.com/](http://www.pennathletics.com/)

Blog / Freshman Questionnaire  
[www.college.upenn.edu/freshmen/blog.php](http://www.college.upenn.edu/freshmen/blog.php)

Career Services  
[www.vpul.upenn.edu/careerservices/](http://www.vpul.upenn.edu/careerservices/)

Careers and a Liberal Education  
[www.college.upenn.edu/careers/liberaled.php](http://www.college.upenn.edu/careers/liberaled.php)

Center for Undergraduate Research and Fellowships  
[www.upenn.edu/curff](http://www.upenn.edu/curff)

Chaplain, Office of the  
[www.upenn.edu/chaplain/](http://www.upenn.edu/chaplain/)

Civic House  
[www.vpul.upenn.edu/civichouse/](http://www.vpul.upenn.edu/civichouse/)

College Alumni Mentoring Series  
[www.college.upenn.edu/support/cams\\_schedule.php](http://www.college.upenn.edu/support/cams_schedule.php)

College Website  
[www.college.upenn.edu/](http://www.college.upenn.edu/)

Communication Within the Curriculum (CWIC)  
[www.sas.upenn.edu/cwic/](http://www.sas.upenn.edu/cwic/)

Computing Services  
[www.sas.upenn.edu/computing/services/students.html](http://www.sas.upenn.edu/computing/services/students.html)

Counseling and Psychological Services  
[www.vpul.upenn.edu/caps/](http://www.vpul.upenn.edu/caps/)

Course Selection Materials  
[www.college.upenn.edu/registration/selection.php](http://www.college.upenn.edu/registration/selection.php)

Curriculum, The College  
[www.college.upenn.edu/curriculum/2010/](http://www.college.upenn.edu/curriculum/2010/)

### D-G

Departments and Programs  
[www.college.upenn.edu/majors/depts.php](http://www.college.upenn.edu/majors/depts.php)

Disabilities Services, Student  
[www.vpul.upenn.edu/lrc/sds/](http://www.vpul.upenn.edu/lrc/sds/)

Email Account  
[www.sas.upenn.edu/computing/help/Email/create\\_acct.html](http://www.sas.upenn.edu/computing/help/Email/create_acct.html)

Financial Services, Student  
[www.sfs.upenn.edu/](http://www.sfs.upenn.edu/)

Freshman Information  
[www.college.upenn.edu/freshmen/](http://www.college.upenn.edu/freshmen/)

Freshman Seminars  
[www.college.upenn.edu/courses/seminars/freshman.php](http://www.college.upenn.edu/courses/seminars/freshman.php)

Greenfield Intercultural Center  
[www.vpul.upenn.edu/gic/](http://www.vpul.upenn.edu/gic/)

### H-N

Health Education, Office of  
[www.vpul.upenn.edu/ohel/](http://www.vpul.upenn.edu/ohel/)

Health Services, Student  
[www.vpul.upenn.edu/shs/](http://www.vpul.upenn.edu/shs/)

Information Commons, David B. Weigle  
[wic.library.upenn.edu/](http://wic.library.upenn.edu/)

Intellectual Life Outside Class  
[www.college.upenn.edu/support/intellect.php](http://www.college.upenn.edu/support/intellect.php)

International Programs, Office of  
[www.upenn.edu/oip/](http://www.upenn.edu/oip/)

Law Careers  
[www.college.upenn.edu/careers/law.php](http://www.college.upenn.edu/careers/law.php)

Learning Resources, Office of  
[www.vpul.upenn.edu/lrc/](http://www.vpul.upenn.edu/lrc/)

Lesbian Gay Bisexual Transgender Center  
[www.vpul.upenn.edu/lgbtc/](http://www.vpul.upenn.edu/lgbtc/)

Library  
[www.library.upenn.edu/](http://www.library.upenn.edu/)

Medical Careers  
[www.college.upenn.edu/careers/health.php](http://www.college.upenn.edu/careers/health.php)

New Student Orientation  
[www.upenn.edu/nsol/](http://www.upenn.edu/nsol/)

Ombudsman, Office of the  
[www.upenn.edu/ombudsman/](http://www.upenn.edu/ombudsman/)

### P-S

Penn InTouch  
<https://sentry.isc.upenn.edu/intouch/>

Phi Beta Kappa  
[www.college.upenn.edu/honors/pbk.php](http://www.college.upenn.edu/honors/pbk.php)

Registrar, Office of the  
[www.upenn.edu/registrar/](http://www.upenn.edu/registrar/)

Requirement Courses  
[fusion.sas.upenn.edu/coll/genreq/index.php](http://fusion.sas.upenn.edu/coll/genreq/index.php)

Research, Undergraduate  
[www.college.upenn.edu/research/](http://www.college.upenn.edu/research/)

Student Life, Office of  
[www.vpul.upenn.edu/osl/](http://www.vpul.upenn.edu/osl/)

### T-W

Tutoring Center  
[www.vpul.upenn.edu/tutoring/](http://www.vpul.upenn.edu/tutoring/)

University Life  
[www.vpul.upenn.edu/resources.html](http://www.vpul.upenn.edu/resources.html)

Webcast for Incoming Freshmen  
[www.college.upenn.edu/freshmen/webcast/](http://www.college.upenn.edu/freshmen/webcast/)

Weingarten Learning Resources Center  
[www.vpul.upenn.edu/lrc/](http://www.vpul.upenn.edu/lrc/)

Women's Center  
[www.vpul.upenn.edu/pwc/main.html](http://www.vpul.upenn.edu/pwc/main.html)

Writing Center  
[www.writing.upenn.edu/critical/help/](http://www.writing.upenn.edu/critical/help/)

Writing Seminars  
[writing.upenn.edu/critical/courses.html](http://writing.upenn.edu/critical/courses.html)

## Academic Calendar

### Fall Term 2008

June 30 – July 25	Mon–Fri	Advance Registration for Freshmen
August 28	Thurs	Move-in for first-year students; NSO activities begin
Aug 28 – Sept 2	Thurs–Tues	Placement exams (check the NSO calendar)
August 31	Sun	Penn Reading Project (check the NSO calendar)
September 1	Mon	Labor Day
2	Tues	Advising, Opening Exercises, Freshman Convocation
3	Wed	First day of class
12	Fri	Last day to add writing or language courses below 200-level
19	Fri	Last day to add a course
October 10	Fri	Last day to drop a course or change grade type
10–14	Fri–Tues	Fall term break (begins at close of classes on Friday)
15	Wed	Classes resume at 8:00 a.m.
24–26	Fri–Sun	Family Weekend
November 1	Sat	Homecoming
3–16	Mon–Sun	Advance Registration for spring term
14	Fri	Last day to withdraw from a course
26–30	Wed–Sun	Thanksgiving break (begins at close of classes on Wednesday)
December 1	Mon	Classes resume at 8:00 a.m.
5	Fri	Fall term classes end
6–9	Sat–Tues	Reading days
10–17	Wed–Wed	Final examinations
17	Wed	Fall term ends

### Spring Term 2009

January 14	Wed	Spring term classes begin
19	Mon	Martin Luther King, Jr. Day observed
23	Fri	Last day to add a writing or language course below 200-level
February 2	Mon	Last day to add a course
20	Fri	Last day to drop a course or change grade type
March 6–15	Fri–Sun	Spring term break (begins at close of classes on Friday)
16	Mon	Classes resume at 8:00 A.M.
Mar 23 – April 5	Mon–Sun	Advance Registration for fall and summer classes
April 3	Fri	Last day to withdraw from a course
28	Tues	Spring term classes end
April 29 – May 1	Wed–Fri	Reading days
May 4–12	Mon–Tues	Final examinations
16	Sat	Alumni Day
17	Sun	Baccalaureate, College Graduation
18	Mon	Commencement

### Summer Sessions 2009

May 25	Mon	Memorial Day (no classes)
26	Tues	12-week evening session and first summer session begin
July 2	Thurs	First summer session classes end
3	Fri	Independence Day observed (no classes)
6	Mon	Second summer session classes begin
August 14	Fri	12-week evening session and second summer session end



Dr. Dennis DeTurck  
Dean of the  
College of Arts and Sciences  
Professor of Mathematics

[www.math.upenn.edu/~deturck/](http://www.math.upenn.edu/~deturck/)

## Welcome from the Dean of the College

Dear Members of the Class of 2012,

The time has finally arrived: you are coming to Penn. You've been thinking about college for years, worrying about getting in, and now you are accepted. Now what happens?

What happens next is an adventure, I promise you. Your four years in the College of Arts and Sciences will astonish, anger, amuse and challenge you. You will surely find everything you need here to blaze your way to a brilliant career, but we hope you will also experience the pleasures of learning for its own sake. This is the one time in your life when all we ask of you is to learn, to think, to experiment, to dream.

This handbook and the College website provide much of the practical information that you need to get started at Penn and to plan your way through the next four years. It can seem like a bewildering excess of information, since the College offers nearly 2,000 courses and more than 50 majors, but with the aid of your teachers and advisors and your own intellectual curiosity, you'll come to make sense of it. If you would permit, I'd like to offer the following advice of my own.

*Never underestimate yourself.* Seek the most challenging courses and programs of study, and never assume that you aren't good enough to succeed in them. The faculty are there to help you stretch your intellectual muscles and train them. If you get in over your head, we can help.

*Take chances.* One of Penn's strengths is the breadth of its academic programs, in both the College of Arts and Sciences and the professional schools. Go beyond the subjects you studied in high school and explore new territory: try a new language, explore an unfamiliar part of the world or follow new directions in science with researchers who are making ground-breaking discoveries.

*Plan ahead.* When you explore, it's best to have a map in hand. For example, many majors require that you take preparatory courses in their own and other departments. If you want to study abroad you should think about your language courses. Your academic advisors and the faculty stand ready to guide you.

*Think outside the classroom.* Learning at Penn happens everywhere: in the classroom, to be sure, but also in the college houses, at lectures from world-renowned speakers, in concert halls and museums and in the Philadelphia community. Take advantage of the resources available only at a great university like Penn, set in an extraordinary city.

*Do your own research.* It's one thing to learn about discoveries in science, social science or the humanities. It's quite another thing to make your own discoveries. Our graduates report that one of the most valuable aspects of their Penn education was engaging in a research project, whether an experiment in cognitive neuroscience, a study of a rare manuscript or an analysis of South American trade policies (just to give a few examples). Our Center for Undergraduate Research and Fellowships can help.

As the faculty, advisors and staff of the College of Arts and Sciences, our goal is to guide and inspire you in the next four years. It is widely recognized that a liberal arts education is the strongest foundation for success in business and most professions. What is just as important, however, and what will remain with you for the rest of your life, is the excitement of discovery and the pleasures of the life of the mind that are at the core of that experience. Bring to Penn all the considerable talent, energy and intelligence we saw in you when you were admitted, and we promise you will not be bored. I look forward to meeting you during the next four years and hearing the stories of your own adventure.

Dennis DeTurck

Dean of the College of Arts and Sciences  
and Professor of Mathematics



## From the Dean of Freshmen

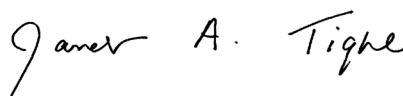
Why have you come to the College of Arts and Sciences at Penn? In what direction do you wish to pursue your further intellectual development?

It is important for you to consider these questions at the beginning of your time here. It is expected that you will refine your answers at regular intervals thereafter. Before you can choose a set of courses that are right for you, you must consider the broader question of what you hope to achieve in your time as an undergraduate.

Setting an academic goal means determining the combination of intellectual abilities, knowledge and mastery of methods that makes the most sense for you as an educated adult. Academic goals should be carefully differentiated from career goals—though they may well complement each other, they are pursued for different reasons. Your intellectual development is a process that will continue throughout your life.

Indeed, the purpose of your time at Penn is to help you live your life to the fullest and to make the most of your abilities. Academic goals ultimately must be seen as preparing you in a broader way than for one particular job or profession.

However you determine your priorities, all we ask is that you remember that what you do now lays the foundation for an education that will long outlast your time in the College. Academic advisors are always available in 120 Cohen Hall to aid you in this exploration.



Janet Tighe

Dean of Freshmen  
and Director of Academic Advising



Dr. Janet Tighe  
Dean of Freshmen  
Director of Academic Advising  
[www.college.upenn.edu/advising/adv/tighe.php](http://www.college.upenn.edu/advising/adv/tighe.php)

## Academic Integrity

The fundamental purpose of the University as an academic community is the pursuit of knowledge. Essential to the success of this educational mission is a commitment to the principles of academic integrity. Academic work represents not only what we have learned about a subject but also how we have learned it. Values and beliefs about academic integrity have been adopted by scholars so that others may trace our honorable footsteps, verify what we have learned and build upon our work. Every member of the University community is responsible for upholding the highest standards of honesty at all times.

As a member of the University community, you are responsible for adhering to the principles and spirit of the Code of Academic Integrity. Penn believes strongly in the importance of academic integrity. Students who violate its precepts are subject to punishment through the judicial system. Ignorance of the rules is no excuse. If you are unsure whether your action(s)

constitute a violation of the Code of Academic Integrity, it is your responsibility to consult with the instructor to clarify any ambiguity.

The best strategy for maintaining academic integrity is to avoid situations where academic dishonesty might occur.

- When in doubt, cite. There are many publications, such as the *Chicago Manual of Style* or the *MLA Handbook for Writers of Research Papers* (which has been placed in Rosengarten Reserve by the Honor Council), that provide information about methods of proper citation. Failure to acknowledge sources is plagiarism, regardless of intention.
- Consult with instructors about assignments.
- Plan ahead to leave sufficient time to complete work.

For more information consult the Office of Student Conduct website, [www.upenn.edu/oscl](http://www.upenn.edu/oscl).

## The Mission of the College

From its central position in an international research university, the College of Arts and Sciences invites students to explore the broad spectrum of human knowledge and takes pride in its capacity to respond to the particular intellectual needs of those who join it. The College thrives on the diversity of scholars and students whose interests it sustains and whose intellectual goals it unites.

The College is committed to offering a broad education that will lay a durable foundation for critical and creative thinking. The College's goal is to help students to become knowledgeable about the world and the complexities of today's society, aware of moral, ethical and social issues, prepared to exercise intellectual leadership, and enlivened by the use of their minds. We believe that students should explore fundamental approaches to the acquisition and interpretation of knowledge through introduction to substantive bodies of current thought in the natural sciences, social sciences and humanities. Equally important, they should learn to understand and evaluate the sources and methods from which this knowledge derives. In this way they can be led to appreciate the contingency of all knowledge and to participate in the on-going excitement of intellectual discovery that is at the heart of the College.

We challenge our students to develop the skills of analysis and communication that will enable them to perceive pattern in complexity, render reasoned judgments, make wise choices under conditions of uncertainty and join with others in the pursuit of common endeavors. They should, for example, be able to write and speak effectively as well as to analyze quantitative data and to use another people's language as one means of access to the diversity of contemporary and historical culture.

A student's emerging interests and talents find expression through an organized program of study in a major field. In the specialized context of the major, students investigate the traditions and contemporary status of an established branch of knowledge. The structured study of a discipline complements the general exploration of our intellectual heritage to provide the balance of educational breadth and depth to which the College is committed. Study of the arts and sciences provides a solid basis for advanced scientific and scholarly research, for subsequent training in the professions and for the informed exercise of the rights and responsibilities of citizenship.

There is no single or easy path to the benefits of liberal education. A program of study must be shaped as a student grows. But the special strengths of the University of Pennsylvania—its combination of academic and professional excellence, its diverse and interdisciplinary tradition, its active community of scholars at all levels of experience—provide a setting in which the College can dedicate itself to nurturing honest, eager and critical minds. In the tradition of its 18th-century founders, the College of Arts and Sciences regards the enduring purpose of education as the liberation of the mind from ignorance, superstition and prejudice. Therefore, the College welcomes those who seek to understand, appreciate and contribute to the achievements of the human intellect.

The College's educational mission finds expression in the structure and goals of its curriculum.

It can be tempting to think of the curriculum simply as a set of courses required for graduation: "What requirements do I have to fulfill to get my degree?" This would be an unfortunate interpretation of the curriculum's intent. Fulfilling degree requirements is not the goal of your undergraduate career, and thinking of the curriculum in these terms can cause you to miss the remarkable opportunities right in front of you.

The word curriculum comes from the Latin for course, denoting movement from a starting point to a destination. The faculty of the College of Arts and Sciences has created the curriculum to help you navigate the course of your undergraduate studies and take full advantage of your options and opportunities. In this spirit, the curriculum is not simply a set of requirements needed to receive a degree, but rather a well-developed course of study designed to help you achieve your intellectual and life goals.

The College curriculum is structured to draw you toward several distinct but related goals. Through courses in the seven sectors you receive a broad, generalized education across the wide range of the arts and sciences. To complement this breadth, you take part in the deeper, specialized study of a major.

The curriculum guides you in the investigation and acquisition of the skills and approaches fundamental to intellectual activity—writing, the analysis of quantitative data and cultural perspectives—as well as engaging you in the intellectual work of academic disciplines.

As you investigate courses with the curriculum as a guide, you will notice that some give priority to developing skills and approaches while others give priority to the academic field under investigation. In any given course, you are likely to find that these objectives are integral to one another. Your ability to use a foreign language is developed through learning about the culture in which the language is rooted; understanding a work of art is acquired by learning how to use words to describe, compare, question and argue about the art itself and about the contexts in which it was created; you learn how to analyze quantitative data by thinking about what data mean for our knowledge of natural or social phenomena we observe.

The commitment to holding these objectives together—general and specialized education, the focus on both skills and fields of knowledge—has been the genius of American higher education since the early part of the last century. The faculty of the College of Arts and Sciences continues to believe that these elements constitute an education that enables intelligent people to prepare for fulfilling and productive lives in the 21st century.

See pages 52-54 for policies governing the Curriculum.

This chart appears on the College website at [www.college.upenn.edu/curriculum/2010/](http://www.college.upenn.edu/curriculum/2010/) with links to descriptions of, and policies governing, each component of the curriculum.

General Education Curriculum		Free Electives	Major
Foundational Approaches	Sectors		
Writing	I Society		
Foreign Language	II History & Tradition		
Quantitative Data Analysis	III Arts & Letters		
Formal Reasoning & Analysis	IV Humanities & Social Sciences		
Cross Cultural Analysis	V The Living World		
Cultural Diversity in the U.S.	VI The Physical World		
	VII Natural Sciences & Mathematics		

## Foundational Approaches

Foundational Approaches are key intellectual capabilities demanded in a variety of disciplines.

### Writing

Writing is the primary medium through which the quality of a student's intellectual work will be judged. The ability to express oneself clearly and persuasively in writing is fundamental for success across all academic disciplines, and throughout one's personal and professional life.

For these reasons, writing plays a central role within the College curriculum. Students must take one course to fulfill the College's Writing Requirement. It is recommended that students take this course during their first year of study. Students are also encouraged to continue development of their writing skills by participating in Penn's writing programs.

### Foreign Language

While students often opt to satisfy the Language Requirement by continuing to study the language that they began in high school or earlier, the wealth of language opportunities at Penn gives students the option to explore new languages and cultures. French, Spanish and sometimes German are taught at the pre-collegiate level, but students are less likely to have been exposed to Arabic, Chinese and Japanese—let alone Uzbek or Hausa—and each of these languages is a mode of access to global cultures and histories.

Penn is immensely proud of its language programs, the variety that they offer, and the results that students achieve in them. The Foreign Language Requirement should be considered as a clear expression of this University's realization that effective modes of communication will be increasingly important in the 21st century.

### Quantitative Data Analysis

In contemporary society, citizenship, work and personal decision-making all require sophisticated thinking about quantitative evidence.

Students in the College must complete one course that uses mathematical or statistical analysis of quantitative data as an important method for understanding another subject. Through such study, students learn to think critically about quantitative data and the inferences that can be drawn from these data. They also gain experience with the use of quantitative analysis to interpret empirical data and to test hypotheses.

Courses in calculus and computer science do not fulfill the requirement because these courses do not require students to analyze actual data sets with the goal of evaluating hypotheses or interpreting results. To count toward the Quantitative Data Analysis Requirement, a course must include such data analysis.

### Formal Reasoning and Analysis

In contrast to Quantitative Data Analysis courses which deal with inductive reasoning, courses designated for this requirement focus on deductive reasoning and the formal structure of human thought, including its linguistic, logical and mathematical constituents. These courses emphasize mathematical and logical thinking and reasoning about formal structures and their application to the investigation of real-world phenomena. In addition to courses in mathematics, this requirement includes courses in computer science, formal linguistics, symbolic logic and decision theory.

### Cross-Cultural Analysis

In our increasingly interconnected world, the Cross-Cultural Analysis Requirement aims to increase students' knowledge and understanding of socio-cultural systems outside the United States.

College students are required to take at least one course to develop their ability to understand and interpret the cultures of peoples with histories different from their own. The focus may be on the past or the present, and it should expose students to distinctive sets of values, attitudes and methods of organizing experience that may not be obtained from American cultures. This exposure to the internal dynamic of another society should lead students to understand the values and practices that define their own cultural framework.

### Cultural Diversity in the U.S.

The Cultural Diversity in the U.S. Requirement complements the Cross Cultural Analysis Requirement and aims to develop students' knowledge of the history, dynamic cultural systems and heterogeneous populations that makes up the national culture of the United States.

College students are required to take at least one course to develop the skills necessary for understanding the population and culture of the United States as it becomes increasingly diverse. Through historical inquiry, the study of cultural expressions and the analysis of social data, students will develop their ability to examine issues of diversity with a focus on race, ethnicity, gender, sexuality, class and religion. The goal is to equip graduates with the ability to become perceptive and engaged members of society.

Students with a documented disability may petition to fulfill the Foreign Language Requirement with an alternate set of courses. See page 53 for details.

## The Sectors

The sectors are intended to ensure breadth of education across the sectors or fields of knowledge, along with interdisciplinary explorations that link several fields of knowledge.

### I Society

Courses in this sector use many analytical techniques that have been developed to study contemporary society, with its complex relations between individuals and larger forms of mass participation.

### II History and Tradition

This sector focuses on studies of continuity and change in human thought, belief and action.

### III Arts and Letters

This sector encompasses the means and meaning of visual arts, literature and music, together with the criticism surrounding them.

### IV Humanities and Social Sciences

This sector comprises courses that combine methods and approaches at work in at least two of the first three sectors.

### V Living World

This sector deals substantively with the evolution, development, structure and/or function of living systems.

### VI Physical World

This sector focuses on the methodology and concepts of physical science.

### VII Natural Science and Mathematics

This sector engages students with diverse approaches to the natural sciences and mathematics.

## The Major

All College students are required to complete at least one major. The role of this requirement is to ensure that all graduates of the College develop a thorough understanding in at least one field of knowledge through concentrated study over several years in at least 12 courses.

Great care should be taken in choosing a major. Students are strongly advised to seek the help of their academic advisors and of individual faculty members in making this choice.

## Free Electives

In addition to these structural elements, the curriculum provides space in a student's studies for a number of Free Electives. These courses provide the freedom to pursue interests that may lie outside a student's major and that extend beyond those addressed in the General Education Curriculum. Students may wish to take a course in a field that they have not otherwise encountered. One or more Free Electives may be used to explore further a subject introduced in a sector course, or students may elect to learn about a subject that sheds light on their major.

## Policies Governing the College Curriculum

Students are expected to know the policies and meet the requirements governing the College curriculum (see pages 52-54).

Students with questions about the curriculum or any other degree requirements should speak with their academic advisor or an assistant dean in the College Office (see pages 14-16).

## ACADEMIC OPTIONS

The University of Pennsylvania affords a number of exciting opportunities for you to enhance your academic experience beyond the General Education Curriculum, including several degree options, numerous minors, and various languages and study abroad programs.

We encourage you to look beyond the basics in selecting courses and meeting requirements. By taking advantage of the College's many academic options, students can create a truly interesting and enriching undergraduate program.

### Foreign Language Study

[www.college.upenn.edu/language/](http://www.college.upenn.edu/language/)

The study of foreign languages is a cornerstone of the arts and sciences curriculum for students in the College.

The University of Pennsylvania offers instruction in well over 50 languages, including Arabic, Bengali, Chinese, Dutch and a wide variety of less commonly taught languages through the Penn Language Center. For more information on the Center see [ccat.sas.upenn.edu/plc/](http://ccat.sas.upenn.edu/plc/).

### Language Certificate

[www.college.upenn.edu/language/certificate.php](http://www.college.upenn.edu/language/certificate.php)

Students have several choices to guide their study of a language other than English. In addition to completion of the College's Foreign Language Requirement, students may choose a major or minor in a language and literature department or program, or they may choose to pursue a language certificate. The language certificate is intended to provide an additional incentive for advanced language study for students who want to do some language study beyond proficiency but who cannot or do not want to fulfill the requirements of a major or minor.

### Languages Offered at Penn

[www.college.upenn.edu/language/offered.php](http://www.college.upenn.edu/language/offered.php)

#### African Studies

(Offered through the Penn Language Center and the African Studies Center) Amharic, Swahili, Twi, Yoruba, Zulu, and tutorials in various African languages (currently Igbo, Setswana, Shona, Wolof)

#### Classical Studies

Classical and Medieval Latin, Ancient Greek and (offered through the Penn Language Center) Modern Greek

#### East Asian Languages and Civilizations

Classical Chinese, Classical Japanese, Japanese, Korean, Mandarin and (offered through the Penn Language Center) Cantonese, Tagalog, Taiwanese, Thai and Vietnamese

#### Germanic Languages and Literatures

German, Dutch, Swedish and Yiddish

#### Linguistics

(Offered through the Penn Language Center) American Sign Language and Irish Gaelic

#### Near Eastern Languages and Civilizations

Akkadian, Arabic, Avestan/Old Persian, Hittite, Modern and Biblical Hebrew, Sumerian, Syriac, Old Egyptian and (offered through the Penn Language Center) Persian and Turkish

#### Romance Languages

French, Spanish, Italian, Portuguese, and (offered through the Penn Language Center) Judeo-Spanish (Ladino)

#### Slavic Languages

Russian and (offered through the Penn Language Center) Czech, Hungarian, Polish and Ukrainian

#### South Asia Studies

Gujarati, Hindi, Sanskrit, Urdu and (offered through the Penn Language Center) Bengali, Kannada, Malayalam, Marathi, Panjabi, Pashto, Tamil and Telugu.



## Writing and Public Speaking

### Writing Programs

[www.writing.upenn.edu/](http://www.writing.upenn.edu/)

The Critical Writing Program provides a uniquely discipline-based writing curriculum for Penn undergraduates across all four schools. Students in writing-intensive courses receive writing support and feedback from peer and senior tutors at the Writing Center.

The Creative Writing Program offers workshops in fiction, non-fiction, poetry, journalistic writing, screenwriting and playwriting. It publishes a literary journal highlighting the work of students, faculty and eminent alumni writers, and provides qualified English majors the opportunity to earn honors in English by submitting a creative thesis. The program also offers a Creative Writing minor (see page 35). Throughout the year, the program invites visiting writers to Penn for readings and talks, and sponsors a University-wide writing contest each spring.

The Kelly Writers House is a historic house on Penn's campus that serves as a center for writers from Penn and the Philadelphia region at large. Each semester the Writers House hosts approximately 150 public programs and projects: poetry readings, film screenings, seminars, art exhibits and musical performances. Each week, about 500 people work, write and collaborate in its many rooms and in the "Arts Cafe."

### Public Speaking

[www.sas.upenn.edu/cwic/](http://www.sas.upenn.edu/cwic/)

Communication Within the Curriculum (CWIC) is Penn's public speaking program. Its mission is to help students express themselves orally with clarity and confidence.

The CWiC Speaking Center offers students access to trained peer speaking advisors. These advisors provide individualized coaching for students and groups working on presentations or seeking less formal speaking guidance. Students interested in becoming speaking advisors should apply for CLST 135, the training course offered each spring. Applications are due in November.

CWiC honors students with both strong research projects and superior speaking abilities by providing those students with a public forum in which to talk about their academic work. See the CWiC website for more on Emerging Scholars Talks.

## Majors, Minors, Degree Options

### Double Majors

[www.college.upenn.edu/majors/double.php](http://www.college.upenn.edu/majors/double.php)

A student pursuing a double major satisfies the requirements for two separate majors within the College but earns a single degree, the B.A.

### Individualized Major

[www.college.upenn.edu/majors/indiv.php](http://www.college.upenn.edu/majors/indiv.php)

The individualized major offers an opportunity for exceptional, creative, self-motivated students to explore innovative and multi-disciplinary fields of knowledge. Students develop a research project from inception, through a coherent set of courses to the writing and rewriting of a high quality thesis under a scholar's mentorship.

### Minors

[www.college.upenn.edu/minors/](http://www.college.upenn.edu/minors/)

While not required to do so, many students complete one or more minors in order to bring an element of cohesiveness to their electives. Students often choose a minor in order to pursue secondary areas of interest, develop skills or a knowledge base that complement their major, express themselves creatively or learn more about themselves and/or their heritage.

See the web page above for a full listing of minors available to College students including:

- Minors that reflect the subject matter of standard College majors (pages 32-45).
- Additional minors offered by departments and programs including: Photography, Jazz and Popular Music, Korean Studies, Asian American Studies and Ancient History.
- Interschool minors offered jointly by the College and the Graduate School of Education, the Wharton School, the School of Nursing, the School of Engineering and Applied Science or the School of Design.

### Dual Degree

[www.college.upenn.edu/degree/dual.php](http://www.college.upenn.edu/degree/dual.php)

Penn undergraduates have the unique opportunity to receive two Bachelor's degrees simultaneously by completing the requirements of the College along with those of the Nursing School, the School of Engineering and Applied Science or the Wharton School.

Students pursuing a dual degree earn a B.A. from the College and a B.S. from Wharton or Nursing, or a B.S.E. or B.S.A. from Engineering.

See pages 32-45 for a listing of major Departments and Programs, including courses recommended for freshmen.

Information on Study Abroad Programs is also available from the Office of International Programs, [www.upenn.edu/oip/](http://www.upenn.edu/oip/).

## Submatriculation

[www.college.upenn.edu/degree/submatric/](http://www.college.upenn.edu/degree/submatric/)

The submatriculation program allows students in the College to obtain both a baccalaureate degree and a master's degree simultaneously. When considering submatriculation, students should be in a position to complete most of their undergraduate degree requirements by the end of the seventh semester.

The Joint B.A./J.D.

Submatriculation Program

[www.college.upenn.edu/degree/submatric/bajd.php](http://www.college.upenn.edu/degree/submatric/bajd.php)

This rigorous program offers an opportunity for highly qualified and motivated College students to apply to Penn Law School during the first semester of their junior year and to submatriculate into the J.D. program in their senior year. See page 31 for more on careers in law.

Vagelos Scholars Program  
in the Molecular Life Sciences

[www.sas.upenn.edu/biochem/vspmls.html](http://www.sas.upenn.edu/biochem/vspmls.html)

The Roy and Diana Vagelos Scholars Program in the Molecular Life Sciences offers Penn's most motivated young scientists an opportunity to begin intensive course work and research in their first year. Vagelos Scholars major in chemistry or biochemistry and complete a second major in any other natural science, with the option of earning a concurrent master's degree. The program requires and funds summer research. Students enter the program in their first semester.

Vagelos Science Challenge Award

Each academic year, five Challenge Awards are given to rising junior or senior College students in the chemistry or physics submatriculation program. This award of full tuition and fees is intended to challenge College science students to get the most from Penn and themselves, both in the classroom and in the laboratory, and it is independent of financial need.

## Careers in Medicine

See page 31 for suggestions and recommended courses for College students interested in pursuing careers in the health professions.

## Study Off Campus

### Study Abroad

[www.college.upenn.edu/abroad/](http://www.college.upenn.edu/abroad/)

Study abroad can be an important and enriching part of a liberal arts education. While engaging in international study, students develop a true understanding of international diversity through immersion in other cultures and by studying in other languages.

### Semester and Full-Year Programs

Each year, approximately 600 Penn undergraduate students attend credit-bearing programs abroad in approximately fifty countries. Students may choose to study for a semester, fall or spring, or a whole academic year abroad.

Students who wish to study in a country or take part in a program where Penn does not have an affiliation will need to petition the appropriate faculty committee for permission. Please contact Dr. Tanya Jung in the College Office for further information.

### Summer Study Abroad

Students who are unable or do not wish to study abroad during the regular academic year may choose to study abroad in the summer through the Summer Study Abroad programs offered by the College of General Studies.

### Academically Based Community Service Courses

[www.upenn.edu/ccpl/index.php](http://www.upenn.edu/ccpl/index.php)

Supported by the Center for Community Partnerships, Academically Based Community Service (ABCS) courses involve hands-on, real-world problem solving and work to build a sustained engagement that transforms students into active community members and citizens. Through their work with West Philadelphia public schools, communities of faith and community organizations, ABCS faculty and students work to solve critical community issues in a variety of areas, such as the environment, arts, health and education.

Over 160 ABCS courses from diverse schools and disciplines across the University have engaged in work in West Philadelphia through the Center for Community Partnerships.



## The Quaker Consortium

[www.college.upenn.edu/options/quaker.php](http://www.college.upenn.edu/options/quaker.php)

Penn students may enroll in courses at Bryn Mawr, Haverford or Swarthmore College during the fall and spring terms of the academic year. The four schools constitute the Quaker Consortium and have a reciprocal agreement for course credit and tuition.

## Washington Semester

[www.fels.upenn.edu/WashingtonSemester/introduction.html](http://www.fels.upenn.edu/WashingtonSemester/introduction.html)

The Washington Semester Program offers students an opportunity to learn from first-hand experience in the political and governmental process while taking courses taught by Penn faculty in the nation's capital.

## Internships

[www.college.upenn.edu/options/internships.php](http://www.college.upenn.edu/options/internships.php)

The College of Arts and Sciences and the Career Services office recognize that it is important for students to gain practical experience through internship programs that augment their formal education and enhance their professional preparation. The College prefers that its students be paid for their work, but when this is not an option and companies insist that the students receive credit as a condition of their "employment," the College will place a notation as a "comment" on their transcript indicating that they have completed an internship. See page 61 for details.

## Credit Away

[www.college.upenn.edu/options/creditaway.php](http://www.college.upenn.edu/options/creditaway.php)

Taking courses at another American university after matriculation into the College and transferring the credit back to Penn is called credit away.

For policies and procedures related to credit away, see page 61.

## Research

[www.college.upenn.edu/research/](http://www.college.upenn.edu/research/)

One of the major advantages of being an undergraduate at a research university is the wide variety of opportunities available for scholarship.

See page 29 for information on resources for undergraduates interested in research.

## College 99

[www.college.upenn.edu/research/college99.php](http://www.college.upenn.edu/research/college99.php)

College 99 is a course designation that permits a student in the College to undertake independent study with a faculty member of the University outside of the School of Arts and Sciences. A student should consider applying for a College 99 only if his or her interests cannot be accommodated through regular or independent study within a department in the School of Arts and Sciences, and only after preparatory course work has been done.

## Scholars Programs

### Benjamin Franklin Scholars

[www.upenn.edu/curfscholars/scholars\\_bfs.htm](http://www.upenn.edu/curfscholars/scholars_bfs.htm)

The Benjamin Franklin Scholars (BFS) program is intended for students committed to performing at the highest level of intellectualism. With the help of an advising team, BFS students plan and participate in a total education that brings scholarly inquiry and challenging courses together into an educational whole.

### University Scholars

[www.upenn.edu/curfscholars/scholars\\_us.htm](http://www.upenn.edu/curfscholars/scholars_us.htm)

The University Scholars program provides an academic environment for intellectually dynamic students who have demonstrated their commitment to research. Students apply to the program from the end of their freshman year through the first semester of their junior year.

### Civic Scholars

[www.vpul.upenn.edu/civichouse/civicscholars/](http://www.vpul.upenn.edu/civichouse/civicscholars/)

The Civic Scholars certificate program is a remarkable opportunity for College students to engage in extra-curricular, volunteer community service and social advocacy work. Summer internships are also a component of the program. (See page 12 for more on Academically Based Community Service Courses.)

### McNair Scholars

[www.vpul.upenn.edu/aap/mcnair/](http://www.vpul.upenn.edu/aap/mcnair/)

This program prepares eligible students for graduate studies leading to the Ph.D.

Students apply to the program at the end of their sophomore year, and participate in the Summer Residential Research Institute, the junior year activities, a Summer Internship and the Senior Year Graduate School Preparatory.

## ACADEMIC ADVISING

As a College student, you will need to choose courses, declare a major and define career goals. You will need to examine your performance in different courses, identify your skills and those you wish to develop, and decide what really matters to you. Much of this assessment you will do yourselves, but faculty members, academic advisors, career counselors and peers can help.

After all is said and done, the actual decisions are made by you and no one else. Advisors are not guidance counselors who can prescribe the best curriculum for a student. It is your responsibility to decide what you want out of a college education and then to pursue that goal.

### The College Advising System

[www.college.upenn.edu/advising/](http://www.college.upenn.edu/advising/)

Students in the College have a strong network of academic advisors available to assist them throughout their undergraduate careers.

Pre-major advisors help first- and second-year students navigate their entrance into academic and intellectual life in the College beginning with the issues of incoming freshmen and continuing through the student's exploration of a potential major.

After declaring a major, students are assigned an academic advisor affiliated with the major department or program.

All students are welcome and encouraged to speak with assistant deans for advising in the College Office. These advisors can help students explore the many options and opportunities available to College students (see below).

### Student Responsibility in the Advising Program

As active and informed participants in the advising process, students are responsible for:

- Determining the shape of their education and defining life goals.
- Reading the publications sent to them from the College Office, especially this handbook. Reading emails from the College Office and using the information available on the College website throughout their undergraduate years.

- Being aware of registration-related deadlines.
- Using Penn InTouch to make course and grading status changes and confirm the accuracy of their registration.
- Keeping appointments with their pre-major advisor and coming to advising sessions
- Making appointments with, or sending email to, assistant deans for advising in the College Office if they need advice outside the expertise of their pre-major advisor.

### Confidentiality

<http://www.vpul.upenn.edu/osl/confiden.html>

In high school, students' grades and other records are considered their parents' property as much as their own. In college, students' academic and medical records are considered their own property. Penn's policy regarding student information is that students are adults, and the University generally will not share their academic and other records (apart from directory information) with third parties without their explicit consent. This is in accordance with the federal Family Educational Rights and Privacy Act. Though there are situations in which the University can choose to divulge information without a student's consent (for example, if they are listed as dependents on their parents' tax returns), for the most part, students must decide who has access to their academic record. They can indicate whether or not they wish their parents or others to see their educational records using the Privacy Settings screen on Penn InTouch (see page 16).

As students begin their careers at Penn, it is very important for them to think carefully about their own responsibility and to have a discussion with their parents about these confidentiality rules. The College expects students to be aware of their grades, course registration and all other aspects of their academic career. The Penn InTouch system provides 24-hour access to this information. The pre-major advisor is there to help students make the most of their academic career, and the University provides a wide range of support services for both academic and non-academic concerns. Students are expected to familiarize themselves with these services and make use of them when appropriate.

## Pre-Major Advising

Each student is assigned a pre-major advisor who is a member of either the School of Arts and Sciences faculty or the professional staff. This advisor will work with the student throughout his or her first two years at Penn to assist in planning courses each semester as well as the overall program.

This relationship culminates with the student's declaration of a major. After major declaration, the student will have a major advisor for the third and fourth years of his or her college career.

Students are encouraged to develop a good working relationship with the pre-major advisor and to seek this person's counsel as often as necessary, not limiting themselves to the required registration meeting.

### The Pre-Major Advisor:

- Meets with incoming freshmen before Advance Registration to discuss and finalize courses after which the advisor will remove the student from registration hold (see page 55).
- Meets with freshmen and sophomores to discuss course selection before each registration period.
- Provides guidance concerning the selection of a major.
- Challenges students to be adventuresome and take advantage of the richness that is Penn.
- Assists in identifying resources and support services that will help students to succeed academically.

In addition to their pre-major advisor, students can and should discuss courses and majors with other students (see the Major Advising Program, page 28) and faculty, especially the undergraduate chairs of the departments and programs that interest them.

All College students are also welcome to discuss their plans and questions with an assistant dean in 120 Cohen Hall any time during their undergraduate years.

## Peer Advisors

Peer advisors are an integral part of the College's pre-major advising program and the first point of contact for incoming College students. They provide the perspective of an upperclass student in the College and assist first-year students in making the transition from high school to Penn by sharing their strategies for academic success and knowledge of campus.

Peer advisors contact their advisees during the freshman Advance Registration period in the summer and remain accessible to the freshmen by email and/or phone throughout the rest of the summer. During New Student Orientation peer advisors introduce the freshmen in their group to their pre-major advisor.

The peer advisors are recruited from amongst the College upperclass student body, trained by the College Office and supervised by a peer manager. The peer advising system is coordinated by Ms. Katrina Glanzer and Mr. Doug Stuart in the College Office.

Peer advisors provide the following kinds of assistance to first-year students:

- Help facilitate conversations between the student and pre-major advisor.
- Assist with Advance Registration in the summer and in November and March.
- Help with the use of Penn InTouch, including creating a worksheet at the appropriate time.
- Help schedule appointments with the pre-major advisor during Advance Registration.
- Help find the answers to questions in College and University publications.
- Answer general questions about degree requirements, academic support services and University procedures throughout the first year.
- Help with information about opportunities for research and academic pursuits outside of the classroom.
- Direct students to the College Office (120 Cohen Hall).

Any student who does not know who his or her peer advisor is should contact Ms. Katrina Glanzer in the College Office.

For more on assistant deans, including pictures, profiles, academic interests, advising specialties including specific study abroad programs, see [www.college.upenn.edu/advising/assistdeans.php](http://www.college.upenn.edu/advising/assistdeans.php).

Students must keep their contact information on Penn InTouch accurate and up to date. The University uses these addresses, as well as the Penn email account, to communicate critical information to students.

## The College Office

The College Office  
120 Cohen Hall, 249 South 36th St.  
Philadelphia, PA 19104-6304  
215.898.6341  
[college@sas.upenn.edu](mailto:college@sas.upenn.edu)

The College Office is home base for undergraduate students in the School of Arts and Sciences. A staff of knowledgeable and experienced academic advisors is available to help with general and special academic circumstances, by appointment (or on a walk-in basis for quick questions) from 9:00-4:00, Monday through Friday.

Students may wish to contact an assistant dean in the College Office regarding:

- Clarification of the College's degree requirements, policies and procedures.
- Special academic programs such as study abroad and dual degrees.
- Supplemental advising if the pre-major advisor is not available during the summer.
- Assistance in locating resources on campus and for help with academic problems.

## Advisors in the College Office

Dean of Freshmen and  
Director of Academic Advising  
Dr. Janet Tighe ([jtighe@sas.upenn.edu](mailto:jtighe@sas.upenn.edu))

Associate Directors of  
Academic Advising  
Dr. Diane D. Frey ([dfrey@sas.upenn.edu](mailto:dfrey@sas.upenn.edu))  
Dr. Alice Kelley ([akelley@sas.upenn.edu](mailto:akelley@sas.upenn.edu))  
Dr. Niel McDowell ([nm@sas.upenn.edu](mailto:nm@sas.upenn.edu))

Assistant Deans for Advising  
Dr. Flora Cornfield ([fcornfie@sas.upenn.edu](mailto:fcornfie@sas.upenn.edu))  
Ms. Janice Curington ([jcuring@sas.upenn.edu](mailto:jcuring@sas.upenn.edu))  
Dr. Hocine Fetni ([hfetni@sas.upenn.edu](mailto:hfetni@sas.upenn.edu))  
Dr. Srilata Gangulee ([gangulee@sas.upenn.edu](mailto:gangulee@sas.upenn.edu))  
Dr. Tanya Jung ([jungt@sas.upenn.edu](mailto:jungt@sas.upenn.edu))  
Dr. Wally Pansing ([pansing@sas.upenn.edu](mailto:pansing@sas.upenn.edu))  
Dr. Gary Purpura, Jr. ([gpurpura@sas.upenn.edu](mailto:gpurpura@sas.upenn.edu))

Assistant Directors of Advising and  
Academic Services  
Ms. Kendal Barbee ([kbr93@sas.upenn.edu](mailto:kbr93@sas.upenn.edu))  
Ms. Katrina Glanzer ([glanzer@sas.upenn.edu](mailto:glanzer@sas.upenn.edu))

Additional services available in the College Office include:

- Help desk for quick questions about academic rules, regulations and procedures.
- Distribution of registration materials including the *Course Timetable*.
- Processing of graduation applications and auditing of seniors for graduation.
- Generation of correspondence such as dean's letters and letters of good academic standing.
- Coordination of peer advising programs.
- Maintenance of student records.
- Support for faculty in their role as undergraduate advisors.

## Advising for Benjamin Franklin and University Scholars

Academic advising is provided for Benjamin Franklin Scholars by Ms. Linda Wiedmann ([wiedmann@pobox.upenn.edu](mailto:wiedmann@pobox.upenn.edu)) and for University Scholars by Dr. Harriet Joseph ([hjoseph@pobox.upenn.edu](mailto:hjoseph@pobox.upenn.edu)).

## Penn InTouch

<https://sentry.isc.upenn.edu/intouch/>

Penn InTouch is the on-line information system for Penn students. To use Penn InTouch, a PennKey and password are required. (See [www.upenn.edu/computing/pennkey/](http://www.upenn.edu/computing/pennkey/) for information about obtaining a PennKey.)

Some of the ways in which Penn InTouch is used include:

*Addresses:* Update local and permanent addresses.

*Privacy Settings:* Indicate to whom academic and/or financial information may be disclosed.

*Course Search:* Find courses for an upcoming semester. This tool allows students to search for courses by subject, time, instructor, College requirement or other criteria.

*Registration:* See information on pages 26-28 for details about registration using Penn InTouch.

*Student Schedule:* View current or past course schedules, class locations and instructors.

*Transcript:* View course and grade information, g.p.a. and print unofficial transcript.

*Academic Planning Worksheet:* See page 18 for details.

## College Houses

The undergraduate residences below are a hub of intellectual, social and recreational activities. Each House has a resident faculty master who sets the general academic agenda, with the help of two faculty fellows who also live in the House. A house dean heads the administrative functions and supervises its programs. As advisors in the College of Arts and Sciences, house deans are available to provide curricular advice to freshman and sophomore students.

### W.E.B. Du Bois College House

215.898.3677

Faculty Master: Rev. William Gipson,  
Assistant Vice Provost for Equity and Access

House Dean: Patricia Williams

pcw2@pobox.upenn.edu

### Harrison College House

215.573.3539

Faculty Master: Prof. Lawrence Sipe, Graduate  
School of Education

House Dean: Dr. Frank Pellicone

frankpel@pobox.upenn.edu

### Fisher Hassenfeld College House

215.573.4295

Faculty Master: Prof. J. Sanford Schwartz,  
Wharton School and the School of Medicine

House Dean: April Herring

aherring@pobox.upenn.edu

### Hill College House

215.898.5237

Faculty Master: Prof. Julie Sochalski,  
School of Nursing

House Dean: Stephanie Weaver

sweaver@pobox.upenn.edu

### Gregory College House

215.573.4633

Faculty Master: Prof. Gwendolyn DuBois Shaw

House Dean: Dr. Christopher Donovan

cdonovan@pobox.upenn.edu

### Kings Court English College House

215.898.2530

Faculty Master: Prof. Jorge Santiago Aviles,  
Electrical and Systems Engineering

House Dean: Dr. Krino Bokreta

bokreta@pobox.upenn.edu

### Rodin College House

215.573.3576

Faculty Master: Prof. Jay Reise, Music

House Dean: Dr. Kenneth Grcich

kgrcich@pobox.upenn.edu

### Riepe College House

215.898.2855

Faculty Master: Prof. Ann Farnsworth-Alvear,  
History

House Dean: Dr. Marilynne Diggs-Thompson

diggst@pobox.upenn.edu

### Harnwell College House

215.573.3497

Faculty Master: Prof. Daniel Bogen,  
Bioengineering

House Dean: Dr. Suhne Ahn

suhnnea@pobox.upenn.edu

### Stouffer College House

215.573.8473

Faculty Master: Prof. Philip Nichols,  
Legal Studies

House Dean: Alison LaLond Wyant

alalond@exchange.upenn.edu

### Ware College House

215.898.9531

Faculty Master: Prof. Mark Liberman,  
Linguistics

House Dean: Dr. Nathan Smith

nws@pobox.upenn.edu



Penn InTouch  
<https://sentry.isc.upenn.edu/intouch/>

Students use their PennKey and password to log into Penn InTouch. See [www.upenn.edu/computing/pennkey/](http://www.upenn.edu/computing/pennkey/) for information about setting up a PennKey.

The worksheet will need to be updated with an advisor every semester.

## Academic Planning Worksheet

One of the many features available through Penn InTouch is a planning worksheet that helps students track their progress toward completion of the degree requirements. Freshmen should explore this tool with the assistance of their peer advisor after Advance Registration. It is important to note that the worksheet is not the final certification for requirement satisfaction, major certification or graduation.

To create a new worksheet, students should:

- Log in to Penn InTouch
- Select WORKSHEET from the menu
- Click on NEW WORKSHEET
- Select "College of Arts and Sciences, Bachelor of Arts" degree program
- Select "College General Education Requirements"
- Select CREATE
- Click on OPEN to view the worksheet.

First-semester freshmen will find two categories of courses on the right-hand side of the worksheet: those in which they are currently enrolled,

and those for which they have advanced standing credit. (Many of these may not be immediately applicable on the worksheet.) Once the first semester has been completed, a third category will appear: completed courses.

Students should consider the following:

- After registration, students may use AUTO ASSIGN to allow the system to allocate courses where it can. (Courses may not fall where expected. An academic advisor can help.)
- The PLAN function can help students explore academic options by allowing the creation of "what if" scenarios in degree planning. The *Course Register* and links to requirement courses at [www.college.upenn.edu/curriculum/2010/](http://www.college.upenn.edu/curriculum/2010/) can help students with this planning process.
- A prospective major may be added to the worksheet in order to view that major's requirements. The question mark at the head of each major requirement is a link to the department or program website containing details about the program, faculty and courses.

The worksheet also helps students and their advisors create a rich and challenging academic experience rather than simply selecting courses and meeting requirements.

**Penn InTouch** Unofficial Worksheet for Requirements for BACHELOR OF ARTS

☐ not filled 
 ☒ approved 
 ☐ approved by exception 
 ☐ cond. appr. 
 ☐ waived 
 ☐ NOT approved

**College General Education Requirements**

For the Class of 2010 and later

THIS WORKSHEET IS AN AID FOR PLANNING. IT IS NOT THE FINAL CERTIFICATION FOR REQUIREMENT SATISFACTION, MAJOR CERTIFICATION, OR GRADUATION.

**FOUNDATIONAL APPROACHES**

A course that fulfills a Quantitative Data Analysis, Formal Reasoning, or Cross-Cultural Analysis requirement may also be counted toward a Sector requirement.

**The Writing Requirement**

Writing Seminar or ENGL 125

**Foreign Language**

Satisfied by Exemption?

Language: Not Satisfied by Exemption

OR

Satisfied by Course?

Final Course

**Formal Reasoning**

Formal Reasoning

**Quantitative Data Analysis**

Quantitative Data Analysis

**Cross Cultural Analysis**

Cross Cultural Analysis

**Cultural Diversity in the US**

Cultural Diversity in the US

**SECTORS**

Beware of Red Plus Signs in the Sectors

You may count no more than one course toward both a Major and a Sector requirement. For Exceptions, check...

<http://www.college.upenn.edu/rules/2010.html#B>

Take one course from each sector.

OL Society

OB History & Tradition

OA Arts & Letters

OC Interdisciplinary Humanities & Social Science

OV Living World

OVI Physical World

OVI Interdisciplinary Natural Sci & Mathematics

OR you may take a second course from either the Living World or Physical World Sector.

**MAJOR REQUIREMENT NOTE**

You may count no more than one course toward both a Major and a Sector requirement.

**Courses**

Use entries on Highlighted

▶ AMCV 005 A  
 ▶ ASFR 007 A  
 ▶ BIOL 140 A  
 ▶ CHEN 050 I  
 ▶ CHEN 101 A-  
 ▶ COML 125 A-  
 ▶ ECON 001 A  
 ▶ ECON 002 A  
 ▶ ECON 003 A-  
 ▶ ECON 150 A  
 ▶ ENGL 098 A  
 ▶ HIST 002 B+  
 ▶ HIST 102 A-  
 ▶ HIST 160 A-  
 ▶ HIST 201 A-  
 ▶ HIST 202 B  
 ▶ HIST 206 A  
 ▶ HIST 230 A  
 ▶ HIST 231 A  
 ▶ HIST 295 A  
 ▶ HIST 420 A  
 ▶ HIST 421 A  
 ▶ HIST 440 B  
 ▶ HIST 441 A-  
 ▶ PSYC 115 F  
 ▶ PSYC 110 B  
 ▶ PSYC 155 A  
 ▶ PSYC 605 A  
 ▶ SPAN 110 A  
 ▶ SPAN 120 A  
 ▶ SPAN 130 A  
 ▶ SPAN 140 A

Currently Enrolled

▶ PSYC 460

▶ PSYC 498

AP Credit

▶ BIOL 101

▶ CHEN 001

**ACTION** Satisfy **REQUIREMENT** Deep Society course 1 (general requirement course)

**Auto Assign** **Go** **View by Requirement** **View by Term**

Courses for which a student has credit, or in which the student is currently enrolled, appear here.

Once a major and/or minor is selected, the requirements for that major will appear in this area. Students may then assign courses to their major or minor requirements the same way they did for the degree requirements. (It is not necessary to have declared a major to explore it in this way.)

Select AUTO ASSIGN to have the system allocate courses to the appropriate requirement.

# ADVANCED PLACEMENT

## NOTES

Many incoming students may have earned pre-college or advanced placement credit. It is important that students understand the policies governing the award of credit in these cases since they will be responsible for submitting the appropriate materials. Different policies may be in place depending on the date of matriculation at Penn.

Penn will grant either credit or placement (a “waiver”) for high achievement on most Advanced Placement (A.P.) exams taken before matriculation if the student indicated on the exam registration form that the scores were to be sent to Penn.

After arriving at Penn, students should check their transcript using Penn InTouch. If expected A.P. or I.B. credit does not appear, they should contact the Office of Transfer Credit and Advanced Placement and ask if Penn received A.P. or I.B. scores.

“Placement” or “waiver” means that the student need not take the course in question, but that they do not receive a credit. For details of equivalent credits or waivers, see below.

A score of 4 or 5 in an A.P. language exam may place a student out of the Language Requirement. (See page 24 for more on language placement.) No other part of the General Education Curriculum can be satisfied with A.P. credits.

## International Exams

A detailed policy statement governing credit equivalence is available from the Office of Transfer Credit and Advanced Placement. Credit is also awarded for the following on a case-by-case basis:

- G.C.E. A-Level Examinations
- International Baccalaureate (I.B.)
- French Baccalauréat
- German Abitur
- Swiss Maturité
- Canada’s CEGEP Program (2nd year only)
- Italian Maturità
- Denmark’s Studentereksamen
- Finland’s Matriculation Examination.

Credit cannot be granted until Penn is in receipt of official exam results and official certified translations.

## Pre-College Credit

For policies governing credit for college courses taken before matriculation at Penn, see page 60.

For the most current information about advanced placement credit see [www.college.upenn.edu/freshmen/ap.php](http://www.college.upenn.edu/freshmen/ap.php).

It is wise for students to bring their student copy of the Advanced Placement score report with them to campus.

Office of Transfer Credit and Advanced Placement 215.898.6080  
xfer@admissions.upenn.edu

## G.C.E. Advanced A-Level Exams

EXAMINATIONS	GRADE OF A OR B		GRADE OF C
Accounting	No credit		No credit
Biology*	BIOL 091		No credit
Chemistry*	CHEM 091		No credit
Economics	A=Waiver for ECON 001, 002 (no credit) B=No Waiver		No credit
English	Departmental review		Dept. review
Greek	Greek Free (1 c.u.)		No credit
History	A=Choice of HIST 041, 042 or 044 (2 c.u. limit) B=No credit		No credit
Latin	Latin Free (1 c.u.)		No credit
Math			
w/Further Math (Edexcel)*	A=MATH 104	B=No credit	No credit
Math w/Special paper			
w/merit (Cambridge)	A=MATH 104	B=No credit	No credit
Physics	A=PHYS 093, 094, 050, 051 (Total 3 c.u.) B=PHYS 091, 092, 011, 012 (Total 3 c.u.)		PHYS 091

\* An internal departmental examination is also available for credit.

Students must show their original A-Level certificates to the Office of Transfer Credit and Advanced Placement to have their scores evaluated for credit. For exams not listed here, and those which specify “departmental review,” students will be sent to the relevant department for evaluation.

In the following listings, “Free” indicates that students receive credit without a specific course listed on their transcript.

The subjects and scores listed below receive the equivalencies indicated. These policies are in effect for students entering Penn during the 2008-09 academic year. All policies remain under ongoing review and are subject to change without prior notice.

All scores of 4 to 1 receive no credit or equivalency unless otherwise indicated.

If an A.P. exam is not listed here, Penn does not grant credit for it.

For the most up-to-date listings see [www.admissionsug.upenn.edu/applying/advanced.php](http://www.admissionsug.upenn.edu/applying/advanced.php).

Office of Transfer Credit and Advanced Placement 215.898.6080  
xfer@admissions.upenn.edu

## Advanced Placement Equivalence

EXAMINATIONS	SCORE	EQUIVALENT
Art History	5	Waivers (no credit) for ARTH 001 or ARTH 002 (consult with undergraduate chair)
Art (studio)	5	No credit (possible exemptions for majors, portfolio considered)
Biology*	5	BIOL 091 (1 c.u., no A.P. credit given for labs)
Chemistry*	5	CHEM 091 (1 c.u., no A.P. credit given for labs)
Computer Science-AB	5, 4	CIS 110 (1 c.u., credit given for the AB or A exam, but not both)
Computer Science-A	5	CIS 110 (1 c.u., credit given for the AB or A exam, but not both)
Economics (Micro)	5	Waiver for ECON 001 (no credit)
Economics (Macro)	5	Waiver for ECON 002 (no credit)
English Lang./Comp.	5	English Free (1 c.u., does not fulfill the Major or Writing Req.)
English Lit./Comp.	5	English Free (1 c.u., does not fulfill the Major or Writing Req.)
Environmental Science	5	ENVS 200 (1 c.u. non-majors only, majors must see department)
European History	5	HIST 041 (1 c.u.)
French Language	5	FREN 210 (1 c.u., fulfills the Foreign Language Requirement)
	4	No credit (fulfills the Foreign Language Requirement)
French Literature	5	FREN 220 (1 c.u., fulfills the Foreign Language Requirement)
	4	No credit (fulfills the Foreign Language Requirement)
German Language	5	GRMN 104 (1 c.u., fulfills the Foreign Language Requirement)
	4	No credit (fulfills the Foreign Language Requirement)
Italian Language	5	ITAL 210 (1 c.u., fulfills the Foreign Language Requirement)
Latin/Literature	5	Latin Free (1 c.u., fulfills the Foreign Language Requirement)
	4	No credit (fulfills the Foreign Language Requirement)
Latin/Vergil	5	Latin Free (1 c.u., fulfills the Foreign Language Requirement)
	4	No credit (fulfills the Foreign Language Requirement)
Mathematics-AB	-	No credit
Mathematics-BC*	5	MATH 104 (1 c.u.)
Physics-B	5	PHYS 091, 092 (2 c.u.)**
Physics-C (Mechanics)	5	PHYS 093 (1 c.u.)**
Physics-C (Elect. & Mag.)	5	PHYS 094 (1 c.u.)**
Psychology	5	Waiver for PSYC 001 (no credit)
Spanish Language	5	SPAN 210 (1 c.u., fulfills the Foreign Language Requirement)
	4	No credit (fulfills the Foreign Language Requirement)
Spanish Literature	5	SPAN 220 (1 c.u., fulfills the Foreign Language Requirement)
Statistics	5	STAT 111 (1 c.u.)
United States History	5	HIST 042 (1 c.u.)
World History	5	HIST 044 (1 c.u.)

\* An internal departmental examination is also available for credit.

\*\* Students who need lab credit sign up for a 0.5 c.u. lab which will appear separately on the transcript.



## International Baccalaureate Policy

EXAMINATIONS	SCORE	EQUIVALENT
Anthropology	-	No credit
Biology*	7, 6	BIOL 091 (1 c.u., no I.B. credit given for labs)
Chemistry*	7, 6	CHEM 091 (1 c.u., no I.B. credit given for labs)
Economics	7, 6	Waiver for ECON 001, 002 (no credit)
English A/B	7, 6, 5	English Free (1 c.u., does not fulfill the Major or Writing Requirement)
French A**	7, 6	FREN 220 (1 c.u.)
	5	FREN 210 (1 c.u.)
French B**	7, 6	FREN 210 (1 c.u.)
Geography	7, 6	Geography Free (2 c.u.)
	5	Geography Free (1 c.u.)
German A**	7, 6	GRMN 216, German Free (2 c.u.)
	5, 4	GRMN 212 (1 c.u.)
German B**	7, 6	GRMN 216, German Free (2 c.u.)
	5, 4	GRMN 104 (1 c.u., fulfills the Foreign Language Requirement)
History of the Americas	7, 6, 5	HIST 042 (1 c.u.)
History of Europe	7, 6, 5	HIST 041 (1 c.u.)
Latin**	7	Latin Free (1 c.u.)
	6	No credit (fulfills the Foreign Language Requirement)
Mathematics*	-	No credit
Math with Further Math*	7	MATH 104 (1 c.u.)
Music	-	No credit
Philosophy	7, 6, 5	Departmental review on case-by-case basis
Physics	7, 6	PHYS 091, 092 (2 c.u., for details on lab requirements see <i>dept.physics.upenn.edu</i> )
Psychology	7, 6	Waiver for PSYC 001 (no credit)
Spanish A**	7, 6	SPAN 220 (1 c.u.)
	5	SPAN 210 (1 c.u.)
Spanish B**	7, 6	SPAN 210 (1 c.u.)
Theatre Arts	7, 6, 5	Departmental review on case-by-case basis

\* An internal departmental examination is also available for credit.

\*\* All language credits fulfill the Foreign Language Requirement.

All other Higher Level International Baccalaureate examinations will be reviewed on an individual basis. For more detailed information regarding the University's International Baccalaureate policies, please contact the Office of Transfer Credit and Advanced Placement.

Credit is awarded for superior performance on the International Baccalaureate Higher Level exams. These policies are in effect for students entering Penn during the 2008-09 academic year. In several instances evaluations have changed from previous years. All of these policies remain under ongoing review and are subject to change without prior notice.

Scores of 4 to 1 receive no credit unless otherwise indicated.

For the most up-to-date listings see [www.admissionsug.upenn.edu/applying/baccalaureate.php](http://www.admissionsug.upenn.edu/applying/baccalaureate.php).

Office of Transfer Credit and Advanced Placement 215.898.6080  
xfer@admissions.upenn.edu

## A.P. Physics

Students may receive credit based on their performance on the A-level, International Baccalaureate or other centrally administered examinations; such students should consult the department or the Office of Transfer Credit and Advanced Placement for details. Credit will be granted to students who achieve a score of 5 on the appropriate Advanced Placement exam. Students who wish to receive credit for prior lab experience must submit their lab reports and lab manual to the undergraduate chair. Students who do so should recognize that most high school physics courses and many courses offered at other universities do not provide a laboratory experience equivalent to that offered by a Penn course. In general, the evaluation of laboratory work performed at another institution will be based on the number of experiments performed, the perceived difficulty of each experiment, the level of analysis required (including graphical presentation of data and error analysis), and the choice and spread of topics. Students with A.P. credit who need to satisfy the lab requirements will be allowed to register for PHYS 011, 012, 050 or 051 to receive lab credit.

Note: A student who takes PHYS 101/102, 150/151 or 170/171 at Penn will lose the physics A.P. credit.

## A.P. Mathematics

A student may receive credit for MATH 104 (1 c.u.) by earning:

- A score of 5 on the Advanced Placement (A.P.) Calculus BC exam, which confers a credit for MATH 104.
- A score of 7 on the International Baccalaureate (Mathematics [Higher Level] plus Further Mathematics).

The Mathematics Department does not give credit for foreign examinations, such as the German Abitur, the French Baccalauréat and the English A-Level.

No credit is given for the A.P. Calculus AB exam regardless of score. Students taking first semester calculus, MATH 104, are expected to have completed successfully an AB Calculus course or the equivalent. It is strongly recommended that those who have not had a calculus course at the level of AB Calculus or who received a score of 3 or lower on the AB exam take MATH 103 to prepare for MATH 104.

Students submitting other results from either the A-Levels or I.B. exams should consult the department or the Office of Transfer Credit and

Advanced Placement or take the Mathematics Department's internal examination.

## Mathematics Department A.P. Exams

All students are eligible to take the Mathematics Department's internal A.P. exams, which are offered at the beginning of the fall semester. Near the end of the summer, the times and dates of the exams will be posted near the top of the department's undergraduate web page.

Anyone who has studied calculus should consider taking these exams. The department keeps no record of those who do not pass; thus, students who take the exams and fail have lost nothing. The exams are open to all without charge. More information is available on the department's website, [www.math.upenn.edu/ugrad/Undergrad.html](http://www.math.upenn.edu/ugrad/Undergrad.html).

## A.P. Biology

Advanced placement credit in biology can be obtained by earning a sufficient score on the ETS Advanced Placement Test, the International Baccalaureate exam or the British A-Level exams. However, the credit earned does not fulfill the Living World sector or Biology major, minor or pre-med requirements. Credit is given as BIOL 091 only for the lecture portion of an introductory biology course. Any student (with or without BIOL 091 credit) may take a Biology Department placement exam given early in the fall and spring semesters. Credit for a departmental placement exam results in lecture credit for the equivalent course (BIOL 101, 102, or 121), and this credit can be used toward the Biology major and minor requirements. Students planning to major in Biology or BBB, or those satisfying pre-med requirements, should follow either of the introductory-level tracks:

### Track I:

Recommended for students with A.P., I.B. or other advanced biology courses and high school chemistry.

- BIOL 121 Introduction to Biology:  
The Molecular Biology of Life  
(lecture and lab, 1.5 c.u.)
- 124 Introductory Organism Biology Lab  
(lab with one hour lecture, 0.5 c.u.)

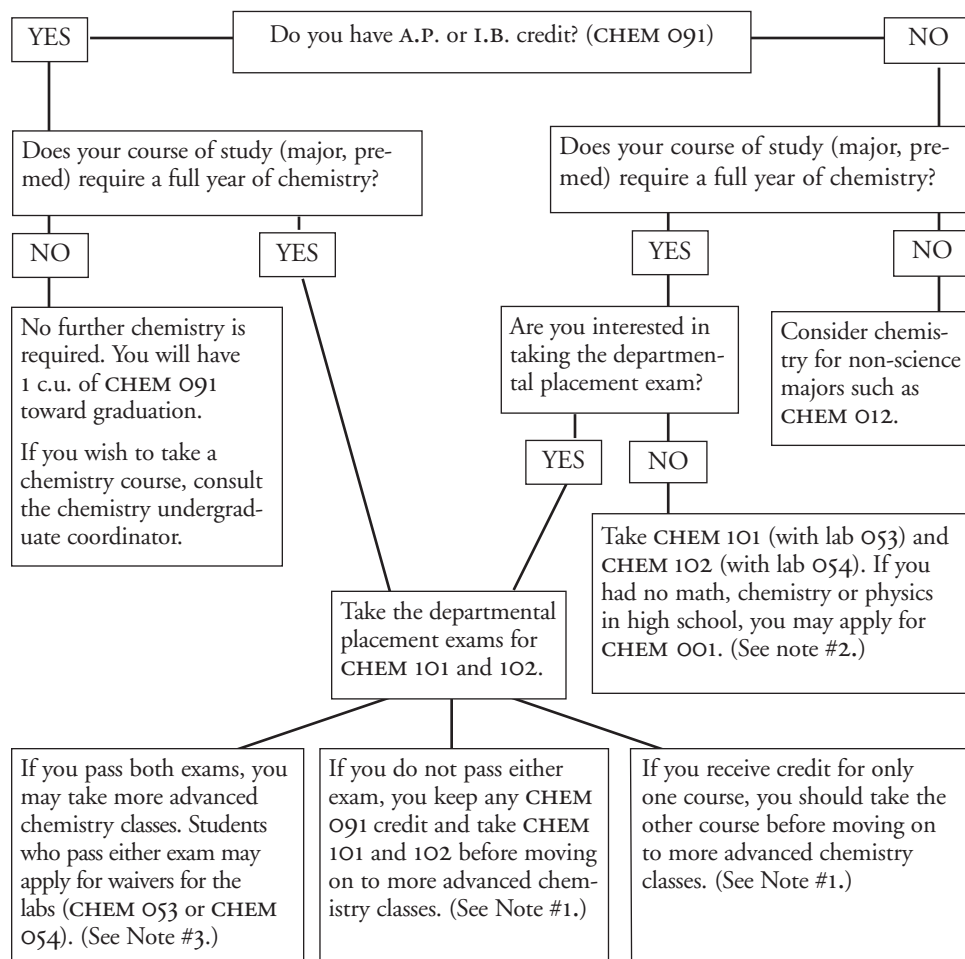
### Track II:

Recommended for students with one year of high school biology.

- BIOL 101 Introduction to Biology A  
(lecture and lab, 1.5 c.u.)
- 102 Introduction to Biology B  
(lecture and lab, 1.5 c.u.)

## A.P. Chemistry

Advanced placement credit in chemistry can be obtained based on the ETS Advanced Placement Test, the International Baccalaureate exam, the British A-Level exams and/or the Chemistry Department Advanced Placement Exams (which are given very early in the fall and spring semesters). Credit is given only for the lecture portion of an introductory chemistry course. For example, a student who has a score of 5 on the ETS Advanced Placement Test is given 1 c.u. for introductory chemistry, CHEM 091. More complete advice and explanations of advanced placement policies can be found on the Chemistry Department website, [www.sas.upenn.edu/chem/](http://www.sas.upenn.edu/chem/).



### Note #1

If you plan to be a natural science major, you should take the special section of CHEM 101 in the fall with CHEM 055 (lab). Advanced students may also take CHEM 015 and 016 as part of the department's honors sequence.

### Note #2

To take CHEM 001, students must fill out an application and obtain a permit.

### Note #3

In order to grant lab waivers, the Chemistry department will need to evaluate the labs and lab content of the student's high school AP chemistry courses. Students should be prepared to submit lab material for review.

## Language Placement

In order to receive credit for a language course at the elementary or intermediate level, all students who have previously studied the language must have a placement score. The only students exempt from having a placement score are those who have never studied the language before.

- French and Spanish offer computerized exams.
- Arabic, Chinese, German, Hebrew, Italian, Latin and Russian exams are written and can be taken upon arrival on campus. The schedule and location of these exams will appear on the New Student Orientation website during the summer ([www.upenn.edu/nso/](http://www.upenn.edu/nso/)).

- Students wishing to be evaluated in a modern language other than those taught by the language departments should consult the Penn Language Center (<http://ccat.sas.upenn.edu/plc/>).
- Credit will not be given for a language course taken at a lower level than a student's placement score indicates.
- Students who feel their placement scores do not accurately reflect their language level, or students who have other questions about their language study, should make an appointment to speak with the coordinator of their particular language program.

Students who have taken the S.A.T. II exam as part of their application to Penn may use that score to place them in the proper level:

S.A.T. II	SCORE	REGISTER FOR	S.A.T. II	SCORE	REGISTER FOR
French	Under 380	FREN 110	Latin	Under 450	LATN 101
	380 - 440	FREN 121		450 - 540	LATN 102
	450 - 540	FREN 130		550 - 590	LATN 203
	550 - 640*	FREN 140		600 - 640	LATN 204
	650 or above	Exempt		650 or above	Exempt
German	Under 350	GRMN 101	Russian	Under 350	RUSS 001
	350 - 440	GRMN 102		350 - 440	RUSS 002
	450 - 540	GRMN 103		450 - 540	RUSS 003
	550 - 640**	GRMN 104		550 - 640*	RUSS 004
	650 or above	Exempt		650 or above	Exempt
Italian	Under 380	ITAL 110	Spanish	Under 380	SPAN 110
	380 - 440	ITAL 120		380 - 440	SPAN 120 or 121
	450 - 540	ITAL 130		450 - 540	SPAN 130
	550 - 640*	ITAL 140		550 - 640*	SPAN 140
	650 or above	Exempt		650 or above	Exempt
Japanese	Students who score 650 or above may satisfy the requirement by demonstrating oral proficiency in an interview.		Hebrew	700 or above***	Exempt

\* Students who score between 600 and 640 can be exempted from the Language Requirement if they pass an oral exam.

\*\* Students who score between 600 and 640 in German can be exempted from the Language Requirement if they achieve a rating of intermediate or better on an oral exam. Students may sign up in the German Department office before the end of the first week of classes.

\*\*\* Students who score under 700 in Hebrew must sign up to take the placement exam in the office of the Department of Near Eastern Languages and Civilizations. A score of 70 or above on Part 2 of the Jerusalem Examination also exempts students from the Language Requirement in Hebrew.

## Resources for Choosing Courses

[www.college.upenn.edu/registration/selection.php](http://www.college.upenn.edu/registration/selection.php)

The College website provides links to essential resources to help students investigate and select courses and to register for each semester. These include the *Course Timetable*, *Course Register*, lists of seminar courses and courses fulfilling College requirements.

## Courseload

Incoming freshmen should register for 4 to 4.5 c.u. for the fall semester. See page 56 for details.

## Freshman Seminar

[www.college.upenn.edu/courses/seminars/freshman.php](http://www.college.upenn.edu/courses/seminars/freshman.php)

While not required, freshman seminars are an excellent introduction to College academic life, and are highly recommended for first- or second-semester students. The primary goal of the freshman seminar program is to provide every freshman with the opportunity for a direct personal encounter with a faculty member in a small class setting devoted to a significant intellectual endeavor. See the list of courses in the *Freshman Seminar Brochure* or on the web.

## Mathematics

Many majors and pre-professional curricula require calculus. Thus, most undergraduates take some math. Students should consult with their advisor to determine whether they need to enroll in a calculus course.

Students who have taken an AB Calculus class in high school should register for the Calculus I course, MATH 104.

Students who have had little or no calculus in high school, or who took AB Calculus but scored poorly on the exam, should take MATH 103 to prepare themselves for MATH 104.

Students with A.P. credit for MATH 104 may choose from one of two courses for Calculus II: MATH 114 and MATH 115.

Students who are interested in math or science might also want to consider a more challenging honors version of Calculus, MATH 116 and MATH 260 (the analogues of MATH 114 and MATH 240). These courses will cover the material more in depth and involve discussion of theory as well as computations.

Some majors (such as Biochemistry, Chemistry, Mathematics, Physics) require MATH 104 and 114; otherwise students needing a second semester of calculus may take either MATH 114 or 115.

A placement exam will be given in all MATH 103 and 104 classes at the beginning of the semester to assist students with course selection.

## Enrolling in the Proper Course

Students who request a math course may not get the exact lecture or recitation section they want. It may take some persistence to get into the course. The department never turns a student away because a course is full. The student can always be fit in somewhere, although not necessarily in the section or at the time the student prefers. Students who need help getting into a course should contact the department.

## Language Course

[www.college.upenn.edu/language/](http://www.college.upenn.edu/language/)

It is recommended that students begin to satisfy the Foreign Language Requirement in their first semester and continue to take courses without break until the requirement is fulfilled. Students planning to continue with a language that they have studied previously should read about language placement on page 24. Students who decide to start a new language at Penn should anticipate that it will require four full semesters of course work to achieve competency in the language and to fulfill the Foreign Language Requirement.

## Writing Seminar

[www.writing.upenn.edu/critical/](http://www.writing.upenn.edu/critical/)

Students should satisfy the Writing Requirement by taking a writing seminar sometime in their first year. For more information on writing seminars see the *Writing Seminar Brochure* or visit the Critical Writing Program website.

## Academic Exploration

The first few semesters are an excellent opportunity to be adventurous and request courses that arouse intellectual curiosity. It is wise to keep potential major interests in mind, but not be limited to a single potential field of study. See pages 32-43 for a brief introduction to major departments and programs, and their suggested courses for freshmen.

Students may use the Course Search tool on Penn InTouch to identify courses of interest and plan their roster.

# REGISTRATION

Incoming freshmen will be on registration hold (i.e., unable to advance register for fall courses) until they have:

1. Completed the Freshman Questionnaire, and
2. Discussed their academic interests and fall course selection with their pre-major advisor.

For more on registration holds, see page 55.

Students are responsible for making certain that they are registered correctly for all parts of a course they are attending. Failure to do so will result in the student not receiving credit for the course.

Registration at Penn occurs at two distinct times: Advance Registration and the Course Selection Period. Each period functions differently.

## Advance Registration

Students request courses for the upcoming semester during the Advance Registration period. For students in the Class of 2012, freshman Advance Registration begins on June 30 and ends on July 25, 2008.

During Advance Registration, students submit their preferred courses, as well as alternate courses, using Penn InTouch, the on-line registration system. Students can submit their requested courses at any time during this period. All course requests are processed at the conclusion of the Advance Registration period, regardless of when the request was submitted. There is no advantage to registering early and no guarantee that students will be enrolled in all their requested courses.

It is very important to take part in Advance Registration. Students who do not advance register may find themselves closed out of the courses they wish to take.

## Course Selection Period

The Course Selection Period begins a few weeks after Advance Registration and extends into the semester. During this period, students can make immediate changes to their course roster. The Course Selection Period allows students to visit classes before finalizing their schedules, but students are expected to attend all classes they may wish to add in order to keep up with assignments and material. Even during this period, instructors may choose to grant admission only to students who have been attending regularly.

Unlike Advance Registration, during the Course Selection Period courses are filled as students register for them, so timing is important and students know immediately if they are enrolled.

## Preparing for First-Semester Advance Registration

Prior to Advance Registration, incoming freshmen must discuss their academic interests and goals with their pre-major advisor and plan a roster for their first semester. After this discussion, students will be removed from registration hold and may submit course requests.

In preparation for the conversation with their pre-major advisor, students should:

- Carefully review the timeline for incoming freshmen and make preparations well in advance of deadlines.
- Complete the Freshman Questionnaire.
- Determine expected academic credit for advanced placement exams.
- View the 5-minute registration tutorial to help clarify the registration process.
- Begin to review potential courses using the print material contained in the freshman packet and the resources available through [www.college.upenn.edu/registration/selection.php](http://www.college.upenn.edu/registration/selection.php).
- Contact the pre-major advisor to request an appointment. Any student unable to reach their pre-major advisor should contact their peer advisor or the College Office.

## The Registration Worksheet

Completing the Registration Worksheet in the *Freshman Timetable* gives students the time to find, prioritize and carefully check the courses they will request during registration. The more complete and accurate the worksheet is, the easier and more successful registration will be.

## Course Codes

All Penn courses are identified by a course code that is made up of three elements: a four-letter department code, a three-digit course number, and a three-digit section number e.g., PSYC 006.301. All parts of the course code must be entered in order for the registration to be successful. Course codes are listed each semester in the *Course Timetable* and the online *Course and Room Roster*.

## Course Times

Courses listed in the *Course Timetable* for one hour (e.g., 9:00 to 10:00 a.m.) actually meet for only 50 minutes. Ten minutes of each class period are allocated for travel between classes. Students may schedule classes back-to-back, but are expected to arrive at the second class on time. (Note: The code for Thursday is R.)

## Multi-Activity Courses

Multi-activity courses are divided into lecture, recitation and/or a laboratory. Lectures are typically led by a professor and take place in a large group. Lectures are often, but not always,



divided into subgroups called recitations that typically meet once each week in smaller groups for discussions. Each of these “activities” has its own course code.

Only one part of a multi-activity course actually carries the credit. When registering for such a course, the credit-bearing portion must be requested first, and students must be sure to register for all parts. If a course has several lecture sections, the recitation needs to correspond to the appropriate lecture.

## Using Penn InTouch

After finalizing the Registration Worksheet in the *Freshman Timetable* and being removed from registration hold by their advisor, students may advance register for courses using Penn InTouch. Penn InTouch requires a student to log on using their PennKey and password. Students who have difficulty using Penn InTouch should contact the College Office, [answers@sas.upenn.edu](mailto:answers@sas.upenn.edu).

## Entering Course Requests

- From the Penn InTouch main page, click on Registration and then select the appropriate semester.
- Refer to the Registration Worksheet for course codes and priorities.
- From the drop-down menu, select the four-letter subject code for the first course listed on the Registration Worksheet.
- In the space provided, enter the course and section numbers as given in the *Freshman Timetable*.
- Click on Request.
- Repeat this process until all course requests have been entered.
- For multi-activity courses, first request the part of the course labeled 1.0 c.u. (or 0.5 for a lab). This is considered the credit-bearing component; the numbers are printed on the far right of the course listing in the *Timetable*.
- After entering the first portion of a multi-activity course, the student will be prompted to register for the remaining portions. All portions of a course (lecture, recitation and lab) must be entered. If all portions are not entered, the system will not consider the course for Advance Registration and the student will not be enrolled. Examples of multi-activity courses include BIOL 101 (lecture and lab), HIST 021 (lecture and recitation), and PSCI 001 (lecture and recitation).

## Listing “Alternates”

Though not required, it is most useful to list an alternate course when requesting small seminars, since this provides a greater chance of being enrolled in one of the listed courses.

Important note: As mentioned above, multi-activity courses include two or more activities: a lecture, a recitation and/or a lab. Only one of these sections will be credit-bearing. Any alternate request must be the same activity type (lecture, recitation or lab) and carry the same credit-bearing status as the primary request. For example, if a credit-bearing lecture is the primary request, only another credit-bearing lecture may be listed as the alternate. Likewise, if a noncredit-bearing recitation (or lab) is the primary request, only another noncredit-bearing recitation (or lab) may be listed as the alternate. Students with questions about this process should talk with their peer or pre-major advisor.

## The “Any Section” Option

When selected, the “Any Section” option instructs the system to find an alternate section of a course that fits into the student’s schedule if the originally requested section is full. During freshman summer Advance Registration, this feature is automatically enabled for all courses except writing and freshman seminars.

## Time Conflicts

The system will not allow a student to enroll in two courses that are in time conflict. If there is a time conflict, the system will enroll the student in the first course requested, if it is available, and the second, conflicting course will be automatically dropped. If the first course is unavailable and the second course is available, the student will be enrolled in the second course.

## Revising Requests

Course requests can be changed on Penn InTouch up until the end of the Advance Registration period.

## Adding a Request

An additional request may be added at any time during the Advance Registration period in the following way:

- Select the Add function from the Registration menu
- Enter the course numbers for the desired classes
- Select request.

### Changing the Order of Requests

The order of requested courses can be changed by selecting List from the Registration Menu, changing the preferred order of requested classes by renumbering them, and then selecting Update.

### Checking the Roster

It is the student's responsibility to insure that he or she is correctly registered for all elements of a course. Freshmen are advised to check their rosters on Penn InTouch at the beginning of the Course Selection Period in early August.

### Pass/Fail

It is not recommended that freshmen take courses on a pass/fail basis. See page 58 for complete policies regarding pass/fail.

### Permits

Under certain circumstances special permission may be required to register for a course. Instructors or departments may issue such permits enabling the student to register for that course through Penn InTouch. If the student does not claim a permit (by adding the course through Penn InTouch), they will be dropped from the list and will have to start over.

## RESOURCES AND SUPPORT SERVICES

For help finding appropriate resources, see the index of support services at [www.college.upenn.edu/support/](http://www.college.upenn.edu/support/) or talk with an assistant dean for advising in the College office.

The University of Pennsylvania offers a wide array of academic and personal support services designed to enhance your undergraduate experience. You will find opportunities to consult with advisors on long-term academic planning and career direction, to develop life skills such as time management and effective communication, and to receive individualized attention focused on your health and overall wellness. We encourage you to take advantage of the rich resources and services the University affords so that you may have the fullest possible undergraduate experience.

### Penn Libraries

[www.library.upenn.edu/](http://www.library.upenn.edu/)

Of the 15 University libraries, Van Pelt Library is the primary library for students in the arts and sciences, providing access to databases, full-text electronic journals and reference sources that are not freely available through public search engines.

For help navigating Van Pelt Library's wealth of resources, students may take a tour of Van Pelt, drop in during walk-in hours, schedule a one-on-one appointment with a reference librarian in a particular subject area or set up an IM chat with a librarian.

### Information Commons

[wic.library.upenn.edu/](http://wic.library.upenn.edu/)

The David B. Weigle Information Commons, located on the ground floor of Van Pelt Library, supports study groups and collaborative learning and offers training, equipment and support for digital media. There are also services and support for students as they work to improve their effectiveness in writing, speaking and original inquiry.

### Advising and Mentoring

In addition to the academic advising available through the College Office in 120 Cohen Hall, the University has a number of programs designed to provide academic guidance and support for students.

#### PENNCAP

[www.vpul.upenn.edu/aap/pennncap/](http://www.vpul.upenn.edu/aap/pennncap/)

PENNCAP is designed to help participants reach their academic and career goals through a four-year program of academic and personal support, academic program planning, career decision-making, financial advising and cultural enrichment activities.

#### Major Advising Program (MAP)

[www.college.upenn.edu/map/](http://www.college.upenn.edu/map/)

The Major Advising Program is a peer advising system that helps students with their search for a major. Junior and senior students who have declared their majors volunteer to introduce their fields of study to students still investigating potential majors. Any College student can access the online database of peer advisors, representing nearly every College major.



## Graduate-Undergraduate Mentoring

[www.gsc.upenn.edu/programs/mentoring/](http://www.gsc.upenn.edu/programs/mentoring/)

The Mentoring Program through the Graduate Student Center connects current Penn undergraduates with members of the Penn graduate and professional student community. The goal is for undergraduates to learn first-hand about preparing for, applying to and succeeding in graduate school.

## Major Dinners

[www.college.upenn.edu/events/dinners.php](http://www.college.upenn.edu/events/dinners.php)

Each semester, the College in collaboration with the College Houses and academic departments and programs holds a series of dinner discussions on majors. These dinners provide an opportunity to explore majors by meeting with faculty and upperclassmen in a small, relaxed setting.

## College Alumni Mentoring Program

[www.college.upenn.edu/support/cams.php](http://www.college.upenn.edu/support/cams.php)

The College Alumni Mentoring Series (CAMS) engages College students and accomplished alumni in mentoring relationships designed to help students determine how their current academic paths coincide with career aspirations. This series of lunches, evening programs and day-long seminars helps to facilitate students' understanding of life beyond Penn.

## Learning and Study Skills

### Learning Resources Center

[www.vpul.upenn.edu/lrc/](http://www.vpul.upenn.edu/lrc/)

The Weingarten Learning Resources Center provides academic support through a varied menu of services and programs, including:

- Individual instruction with a learning instructor
- Print information: self-help pamphlets, handouts and calendar tools for independent use
- Interactive workshops
- Collaborative University programs.

### Speaking

[www.sas.upenn.edu/cwic/faq.html](http://www.sas.upenn.edu/cwic/faq.html)

The CWiC Speaking Center offers students access to trained peer speaking advisors who provide individualized coaching for students and groups working on presentations or seeking less formal speaking guidance.

## Subject Tutoring

### Tutoring Center

[www.vpul.upenn.edu/tutoring/](http://www.vpul.upenn.edu/tutoring/)

The Tutoring Center offers individual peer tutoring in specific courses.

The Old Exam File gives students access to faculty-approved online exams (without answers) for many courses. This service is intended for use by students as a study tool only, coupled with peer tutoring.

To request an individual tutor or to view each semester's schedule of workshops and review sessions, visit the Center's website.

### Writing Center

[www.writing.upenn.edu/critical/help/](http://www.writing.upenn.edu/critical/help/)

The writing tutors at the Penn Writing Center offer expert writing help to Penn undergraduate and graduate students.

### Language Direct

[ccat.sas.upenn.edu/plc/languagedirect.php](http://ccat.sas.upenn.edu/plc/languagedirect.php)

Language Direct is a program of the Penn Language Center that offers on-line and drop-in peer tutoring for students who want to improve their language skills in French, German, Italian, Spanish, Russian, Chinese and Japanese.

## Research

### Center for Undergraduate Research and Fellowships (CURF)

[www.upenn.edu/curf/research/research.htm](http://www.upenn.edu/curf/research/research.htm)

Advisors at CURF are available to assist students investigating undergraduate or graduate research opportunities in the humanities, social sciences or natural sciences.

### College Undergraduate Research Electronic Journal (CUREJ)

[repository.upenn.edu/curej/](http://repository.upenn.edu/curej/)

CUREJ is an on-line, searchable repository that holds examples of undergraduate research exploring a wide range of academic interests from the natural sciences through the social sciences and humanities, including music, painting and more.

The Career Services website includes resources and links tailored to College students, see [www.vpul.upenn.edu/careerservices/college/](http://www.vpul.upenn.edu/careerservices/college/).

## Health Services

### The Office of Health Education

[www.vpul.upenn.edu/ohel](http://www.vpul.upenn.edu/ohel)

The Office of Health Education (OHE) provides risk reduction and public health promotion services to the campus, which include data collection and analysis, educational workshops, health awareness events and campaigns, academic courses, training and consultations.

### Student Health Service

[www.vpul.upenn.edu/shs/](http://www.vpul.upenn.edu/shs/)

Student Health Service offers accessible and affordable care for illness, injury, general health, travelers' health and emergencies. In addition to the clinical services, SHS works in close collaboration with the other health and wellness departments in the University Life Division, and with colleagues in the University of Pennsylvania Health System. SHS also coordinates public health programs and activities for University students.

### Counseling and Psychological Services

[www.vpul.upenn.edu/caps/](http://www.vpul.upenn.edu/caps/)

Counseling and Psychological Services provides professional psychological and psychiatric services to undergraduate, graduate and professional students who are having personal problems involving social, emotional, academic and career issues. The most frequent concerns presented by clients are poor academic performance, stress management, low self-esteem, eating concerns, drug and alcohol abuse, racial/ethnic identity issues, relationship conflicts, sexual orientation and identity concerns, career conflicts and indecisiveness, loss/grief and depression.

### Alcohol Policy Initiatives

[www.vpul.upenn.edu/alcohol/](http://www.vpul.upenn.edu/alcohol/)

Alcohol Policy Initiatives is responsible for alcohol education including programs about individual and group responsibility, recovery and social options.

### Sport and Physical Fitness

[www.upenn.edu/recreation/](http://www.upenn.edu/recreation/)

Penn Recreation provides and supports programs and facilities for intercollegiate and club sports as well as personal fitness and recreation.

## Student Disabilities Services

[www.vpul.upenn.edu/lrc/sds/](http://www.vpul.upenn.edu/lrc/sds/)

Student Disabilities Services provides comprehensive, professional services and programs for students with disabilities to ensure equal academic opportunities and participation in University-sponsored programs. Professional staff evaluate documentation, determine program eligibility and reasonable accommodations for all qualified students with documented disabilities on an individual basis, including academic accommodations, accessible campus housing, transportation and parking, auxiliary aids, services and the loan of equipment and assistive technologies.

## Post-Graduate Preparation

### Career Services

[www.vpul.upenn.edu/careerservices/](http://www.vpul.upenn.edu/careerservices/)

Career Services helps undergraduates and alumni define their career goals and take the steps necessary to achieve them by providing resources and services on career direction/assessment, employment and admission to graduate and professional schools through individual advising, career seminars, placement workshops, online job listings and alumni networks. (Also see Career Services for the Health Professions below.)

### Career Paths for College Students

[www.college.upenn.edu/img/paths.pdf](http://www.college.upenn.edu/img/paths.pdf)

Students in the College of Arts and Sciences are advised to follow their true academic interests and explore fields that are new and interesting. The experiences of alumni from the College of Arts and Sciences demonstrate the variety of interesting academic paths that can lead to every career field. *Career Paths for College Students* highlights the perspectives and choices of College alumni in their undergraduate and professional careers.

### College Alumni Mentoring Series

[www.college.upenn.edu/support/cams.php](http://www.college.upenn.edu/support/cams.php)

The College Alumni Mentoring Series (CAMS) engages College students and alumni in mentoring relationships to help students determine how their current academic paths coincide with career aspirations. The series is composed of three types of events that help to facilitate students' understanding of life beyond Penn:

- Mentoring Lunches (intended primarily for sophomores and juniors)
- Themed Evening Programs
- College of Arts and Sciences Career Institute.

These meetings are intended to build a relationship with an alumnus/a who wants to share his or her life experiences and advice with current students.

## Graduate Study

[www.college.upenn.edu/careers/gradstudy.php](http://www.college.upenn.edu/careers/gradstudy.php)

### Humanities and Social Sciences

Students may explore an interest in humanities or social science research early in their careers by taking a Freshman Seminar or a Benjamin Franklin Seminar. As they explore their majors, students should consider fields they might want to do graduate study in, taking opportunities to enroll in research methods courses and seminars in those fields (even if they are not part of the student's major). They should also take advantage of the Undergraduate Research Directory and the many other resources for undergraduate research available through the College website.

### Natural Science

Penn offers much to the student who wishes to study science at the highest levels. Those who wish to major in one of the natural sciences should take courses in that discipline in their first semester. Students should speak with the undergraduate chair of the department that interests them as they plan their first year.

### Fellowships and Scholarships

[www.upenn.edu/curff/fellowships/fellowships.htm](http://www.upenn.edu/curff/fellowships/fellowships.htm)

The Center for Undergraduate Research and Fellowships assists undergraduates in finding and applying for fellowships to fund post-baccalaureate study.

## Careers in Law

[www.college.upenn.edu/careers/law.php](http://www.college.upenn.edu/careers/law.php)

There is no pre-law major or required sequence of courses. Most law school admissions committees seek students with well-rounded liberal arts educations that focus on strong writing, research and verbal skills. Throughout their college careers, students should seek balance in their coursework, regardless of their major, and should be sure to take some classes that have a quantitative or analytical focus, such as statistics, economics or mathematics.

Students interested in careers in law may wish to investigate the B.A./J.D. submatriculation program (page 12).

## Careers in Medicine

[www.college.upenn.edu/careers/health.php](http://www.college.upenn.edu/careers/health.php)

Students need not major in one of the natural sciences to study medicine, dentistry or veterinary medicine. The basic mathematics and science requirements for most medical schools to which Penn students apply include:

- One year of biology with lab (BIOL 101/102 or BIOL 121 if the student has BIOL 091 credit.) If a student has A.P. credit in biology (BIOL 091), see page 22. Students planning to go to medical school need to take a full year of biology (lecture and lab) during their college years. Those who receive placement credit for BIOL 101, 102 or 121 should consider taking a 200-level biology course after completing their introductory course work.
- One year of chemistry with lab (CHEM 101/102 or CHEM 001/102, plus labs). If a student has A.P. credit in chemistry (CHEM 091), see the A.P. chemistry chart, page 23.
- One year of physics with lab (PHYS 101/102 or PHYS 150/151); some majors require PHYS 150/151. If a student has A.P. credit in physics (PHYS 091, 092, 093 or 094), see page 22 and the Physics website, [www.physics.upenn.edu/home/academics/ugrad/undergrad.htm](http://www.physics.upenn.edu/home/academics/ugrad/undergrad.htm).
- One year of organic chemistry with lab (CHEM 241/242 and CHEM 245).
- One year of College mathematics (MATH 104 and a statistics course); some majors require MATH 104/114. A few medical schools still require a full year of calculus, but the vast majority will accept statistics and a semester of calculus.
- Two semesters of English or comparative literature courses. (Students may use writing seminars to satisfy this requirement.)

Students interested in a career in the health professions should familiarize themselves with the pre-health section of the Career Services website and make contact with a pre-health advisor in Career Services during their junior year. For further information, see [www.vpul.upenn.edu/careerservices/gradproflhealthprofl](http://www.vpul.upenn.edu/careerservices/gradproflhealthprofl).

## DEPARTMENTS AND PROGRAMS

It is sometimes tempting to take what seems a safer path and select courses from academic fields already familiar. But with courses offered in over 50 departments and programs, College students have the opportunity to sample courses across a wide spectrum of disciplines. By thinking creatively about course selection, students can build their own unique and rewarding undergraduate experience.

For a list of undergraduate chairs, including contact information, see [www.college.upenn.edu/majors/chairs.php](http://www.college.upenn.edu/majors/chairs.php).

For a list of departmental addresses and phone numbers, see [www.college.upenn.edu/majors/offices.php](http://www.college.upenn.edu/majors/offices.php).

### African Studies

[www.africa.upenn.edu/AS.html](http://www.africa.upenn.edu/AS.html)

African Studies brings together researchers and students from all schools to gain knowledge on contemporary and historical Africa in a variety of disciplines. Students may take courses through a number of departments and programs or study any of the almost ten African languages offered (see page 10).

Courses appropriate for first-year students include AFST:

- 011 Urban Sociology
- 050 World Musics and Cultures
- 076 Africa Since 1800
- 077 Jazz: Styles and History
- 078 Urban University: Community Relations
- 135 Law and Society
- 190 Introduction to Africa

### Africana Studies

[www.sas.upenn.edu/africanal/](http://www.sas.upenn.edu/africanal/)

Africana Studies is an interdisciplinary field of study devoted to the critical and systematic examination of the cultural, political, social and historical experiences of peoples of the African diaspora. The major is designed to provide students with an integrated understanding and appreciation for the African, African-American, Caribbean, Latin American and other African diasporic experiences in their diverse dimensions.

Courses appropriate for first year students include AFRC:

- 001 Introduction to Africana Studies
- 006 Race and Ethnic Relations
- 018 Popular Culture in Africa
- 041 Homelessness and Urban Inequality (Freshman Seminar)
- 050 World Musics and Cultures
- 075 Africa Before 1800
- 079 Literatures of Jazz
- 081 African American Literature
- 111 Religion and Secular Values: The American Jesus
- 116 Caribbean Culture and Politics
- 176 Afro-American History, 1550-1876
- 177 Afro-American History, 1876-Present

### Anthropology

[www.sas.upenn.edu/anthro/undergrad.html](http://www.sas.upenn.edu/anthro/undergrad.html)

Anthropology is the study of human diversity, past and present. The Department of Anthropology integrates cultural anthropology (living peoples), archaeology (prehistoric and historical peoples), biological/physical anthropology (the interaction between culture and human biological variation) and linguistic anthropology (language variation and its relation to culture).

Anthropology majors experience the full breadth of the discipline while choosing a course of study best suited to their own needs.

An introductory courses for the major is ANTH:

- 003 Introduction to Human Evolution

Also appropriate for first year students are ANTH:

- 012 Globalization and Its Historical Significance
- 086 Desire and Demand (Freshman Seminar)
- 104 Sex and Human Nature
- 160 Mythology and the Movies
- 190 Introduction to Africa
- 215 What is Culture?
- 219 Archaeology Field Project (Participate in an archaeological dig.)
- 234 Pharmaceuticals and Global Health
- 243 Being Human: Biology, Culture and Human Diversity

### Architecture

[www.design.upenn.edu/new/arch/undergrad/](http://www.design.upenn.edu/new/arch/undergrad/)

The mission of the undergraduate program in architecture is to develop basic skills, knowledge and methods of inquiry in the discipline of architecture within the context of a studio-based liberal arts education. The program provides for the study of architecture on three levels of engagement: a minor, a major with a concentration in either Design or History, Theory and Criticism and an Intensive Major qualifying an undergraduate student for advanced standing in the Master of Architecture professional degree program offered by Penn's School of Design.

The program offers the freshman seminar ARCH 102.301, Architecture Today.

## Asian American Studies (minor only)

[asam.sas.upenn.edu/](http://asam.sas.upenn.edu/)

Asian American Studies is an interdisciplinary program that explores the historical and contemporary experiences of Asian immigrants and of persons of Asian ancestry in North America and the relevance of those experiences for understanding race and ethnicity in national and global contexts.

Courses appropriate for first year students include ASAM:

- OO1 Asian Americans in Contemporary Society
- OO2 Introduction to Asian American Literature
- OO3 Introduction to Asian American History
- OO9 Writing About Race and Popular Cinema
- O16 South Asians in the U.S. (Freshman Seminar)

## Biochemistry

[www.sas.upenn.edu/biochem/](http://www.sas.upenn.edu/biochem/)

Most developments in today's and tomorrow's life sciences rely extensively on techniques and principles of chemistry and physics. The importance of this relationship has led to the design of a major that prepares students for advanced study in biochemistry, biophysics, cell biology, genomics, molecular biology, nanotechnology, neurobiology, structural biology and genetics-based biotechnology. It can also provide the basic science background for health professional schools and for prospective science teachers. An important part of the curriculum is that all majors work in faculty research laboratories, which can start as early as the freshman year. Juniors and seniors actively participate in organizing and running the Chemistry Department's biological chemistry seminar series.

Students with three or more A.P. science and mathematics credits should contact the undergraduate chair before their first semester at Penn. More ambitious students should investigate the Vagelos Molecular Life Sciences Scholars Program, [www.sas.upenn.edu/biochem/vspmls.html](http://www.sas.upenn.edu/biochem/vspmls.html).

## Biological Basis of Behavior

[www.psych.upenn.edu/bbb/](http://www.psych.upenn.edu/bbb/)

Biological Basis of Behavior (BBB) is an interdisciplinary major in which students explore the relationship between behavior (both human and animal) and its organic bases. BBB offers courses in virtually all areas of neuroscience,

ranging from cellular neurobiology to cognitive neuropsychology, and integrates these interdisciplinary courses with basic science requirements in biology, chemistry and psychology. The program integrates interdisciplinary teaching and research in neuroscience through the cooperative interactions of faculty and staff in several departments in the School of Arts and Sciences and the Schools of Medicine and Veterinary Medicine.

Courses appropriate for first-year students include:

- BIOL 101/102 Introduction to Biology
- 109 Introduction to Brain and Behavior
- 121 Introduction to Biology: The Molecular Biology of Life
- PSYC OO1 Introduction to Experimental Psychology
- CHEM 101/102 General Chemistry

## Biology

[www.bio.upenn.edu/](http://www.bio.upenn.edu/)

The Biology major provides a broad background in biology together with the opportunity to pursue specific areas of interest in greater depth. The curriculum keeps pace with recent developments in molecular biology and the study of evolutionary processes, including proteomics, computational genomics, molecular evolution and epigenetics.

The Biology major can serve as preparation for graduate study in the biological sciences, graduate training in health-related professions, teaching or employment in a laboratory or a conservation-related job.

The requirements include introductory biology, a choice of three intermediate-level courses and four additional courses selected in order to further develop a comprehensive understanding of biology or to specialize in a particular subject area.

See page 23 for suggested courses.

## Biophysics

[www.sas.upenn.edu/biophysics/](http://www.sas.upenn.edu/biophysics/)

Biophysics is a discipline that bridges and includes both the biological sciences and the physical sciences. Biophysics is concerned with physical and chemical explanations of living processes, especially at the cellular and molecular levels. Detailed molecular descriptions are emerging for genetic elements and for the mechanisms that control their propagation and



expression. Protein structure, nucleic acid structure, enzyme mechanisms, the phenomena underlying cellular behavior, excitable phenomena in nerve, muscle and visual cells, and integrative neural phenomena all have been subject to intense biophysical study. Physicists and other scientists with strong backgrounds in mathematics, chemistry and physics have played dominant roles in these developments; they will continue to contribute as more detailed descriptions become available and increasingly complex phenomena are studied.

The Biophysics major requires the introductory courses in biology, physics and chemistry. First-year students can begin with these introductory courses in any order. Students with a very strong background in physics occasionally begin with the major's main survey course, PHYS 28O.

## Chemistry

[www.sas.upenn.edu/chem/](http://www.sas.upenn.edu/chem/)

Chemistry is concerned with the study of matter and the changes matter can undergo. The chemistry program provides a basic foundation for career opportunities in chemical research and teaching, in scientific communication and information transfer, and in the health professions. Students who desire preparation for advanced study in chemistry or allied fields where research experience is advantageous should complete the chemistry honors program.

See page 24 for suggested courses.

## Cinema Studies

[cinemastudies.sas.upenn.edu/](http://cinemastudies.sas.upenn.edu/)

Cinema Studies is an interdisciplinary program designed to acquaint students with the history and interpretation of cinema and to allow them to combine knowledge of the field with the traditional aims of an undergraduate arts and sciences education. The program can satisfy the needs of students who seek a general exposure to the field or who are preparing for careers in cinema scholarship, journalism, criticism, arts management or entertainment law. Students seeking employment in the filmmaking industry should know that this program does not provide professional technical training.

Courses appropriate for first-year students include CINE:

- 101 World Film History and Analysis to 1945
- 102 World Film History and Analysis, 1945 to Present
- 103 Introduction to Film Theory

## Classical Studies

[www.classics.upenn.edu](http://www.classics.upenn.edu)

The Department of Classical Studies promotes the investigation and interpretation of all aspects of ancient Greek and Roman culture and its influence from antiquity through the Middle Ages and Renaissance up to the present day. It focuses not just on the ancient languages and literatures, but also on material culture, archaeology, history (political, social, economic and intellectual), philosophy, religion, mythology and the classical tradition.

The Department of Classical Studies also offers a major in Ancient History. This major encourages a comparative approach to the study of premodern cultures beyond the confines of the Mediterranean. The major has a core built around the world of the ancient Mediterranean, but encourages students to study historical systems in a broader context including, for example, the study of ancient cultures from Asia or the Americas.

Courses appropriate for first-year students include ANCH:

- O26 The History of Ancient Greece
- O27 The History of Ancient Rome

## Cognitive Science

[www.ircs.upenn.edu/education/ba-cogsci.shtml](http://www.ircs.upenn.edu/education/ba-cogsci.shtml)

Cognitive science is the empirical study of intelligent systems, including the human mind. It is, by its nature, interdisciplinary, drawing from biology, computer science, linguistics, mathematics, neuroscience, philosophy and psychology. It combines the application of approaches from these disciplines to the study of language processing, perception, action, learning, concept formation, inference and other activities of the mind and the applications of the resulting theories to information technology and the study of artificial intelligence.

Students should begin their studies with COGS 001, Introduction to Cognitive Science, in the fall of their freshman year if at all possible.

Additional courses appropriate for first-year students include:

- BIBB 109 Introduction to Brain and Behavior
- CIS 110 Introduction to Programming
- 120 Programming Languages and Techniques
- LING 001 Introduction to Linguistics

- PSYC 001 Introduction to Experimental Psychology  
 149 Introduction to Cognitive Neuroscience

## Communication

[www.asc.upenn.edu/](http://www.asc.upenn.edu/)

Undergraduate students majoring in Communication at the University of Pennsylvania study media institutions, communication and contemporary culture, and a wide variety of communication influences in social, political and economic contexts. The Bachelor of Arts Degree with a major in Communication is granted by the College of Arts and Sciences, but the major curriculum is designed, administered and instructed by the Annenberg School.

Courses appropriate for first-year students include COMM 125 and 130; however, students often enroll in these courses as second-semester freshmen or as first-semester sophomores.

## Comparative Literature

[ccat.sas.upenn.edu/Complit/](http://ccat.sas.upenn.edu/Complit/)

The undergraduate major program in Comparative Literature fosters the study of literature and culture from a cross-national and global perspective. The core courses teach students to appreciate the variety of meanings texts acquire in different institutional and creative contexts, among them law, medicine, art and music, and different social contexts, such as gender, ethnicity, race and class. Advanced courses explore topics from literary theory to the investigations of literary genres and periods within particular cultural traditions. The major program is well suited for students with interdisciplinary interests in literature and other fields.

Courses appropriate for first-year students include COML:

- 100 Introduction to Literature
- 103 Performing History
- 125 Narrative Across Cultures
- 150 War and Representation
- 197 Madness and Madmen in Russian Culture
- 213 Saints and Devils in Russian Literature (Freshman Seminar)
- 245 Study of a Theme
- 253 Metropolis: Culture of the City
- 266 Introduction to Modern Hebrew Literature

## Creative Writing (minor only)

[www.writing.upenn.edu/cw/](http://www.writing.upenn.edu/cw/)

The creative writing faculty at Penn has included some of the most important writers of their time and some of Penn's most brilliant and effective teachers. This rich tradition, combined with the emergence of a lively culture of writers at Penn, has made the minor in Creative Writing very attractive.

Courses appropriate for first-year students include ENGL:

- 010 Creative Writing
- 112 Fiction Writing Workshop
- 113 Poetry Writing Workshop
- 116 Screenwriting Workshop
- 135 Creative Non-Fiction Writing
- 157 Introduction to Journalistic Writing

## Criminology

[www.crim.upenn.edu/programs/undergrad.html](http://www.crim.upenn.edu/programs/undergrad.html)

Beginning with an introduction to crime and justice, the Criminology major enables students to acquire a theoretical and methodological framework for generating and assessing knowledge about crime and social control.

The Criminology program draws upon disciplines from statistics to neuroscience to develop a liberal arts approach to the subject of crime. Students become familiar with the process of hypothesis formulation and testing, research design, interpretation of results and peer-review journal publication. The program culminates in a two-semester sequence: a faculty research seminar in which students undertake primary data collection or analysis, and a senior thesis that expands upon the first-semester work.

Those pursuing the major will find careers not just as future lawyers or police officials, but also as doctors, journalists, neuroscientists, investment bankers, entrepreneurs, schoolteachers and the full range of vocations pursued by Penn alumni.

Students intending to major in Criminology should begin with CRIM 100, Criminology, an introductory course that examines the multidisciplinary science of law-making, law-breaking and law-enforcing. This course is also appropriate for non-majors interested in this topic.

## East Asian Area Studies

[www.ceas.sas.upenn.edu/degprograms.shtml](http://www.ceas.sas.upenn.edu/degprograms.shtml)

This interdisciplinary program focuses on East Asia as a region of the world and human experience. Approaches draw from the social sciences, humanities and legal studies while maintaining high standards in language study.

Students interested in the major should begin with the study of an East Asian language and a course introducing East Asia such as:

EALC 001 Introduction to Chinese Civilization

002 Introduction to Japanese Civilization

HIST 120 Korean History Before 1860

Another course appropriate for first-year students is EALC 127, Arts of China.

## East Asian Languages and Civilizations

[www.sas.upenn.edu/ealc/](http://www.sas.upenn.edu/ealc/)

The program in East Asian Languages and Civilizations offers language training and courses in the history, literature, linguistics, art history, performance and gender studies, philosophy, religion and ethics of East Asia. Students may major in either Chinese or Japanese, and minor in Chinese, Japanese or Korean.

Courses appropriate for first-year students include EALC:

001 Introduction to Chinese Civilization

016 Gender and Sexuality in East Asia (Freshman Seminar)

069 Japanese Popular Culture

180 Pre-Modern Korean Literature

Courses under the 100 level and most under the 200 level are also appropriate for freshmen.

## Economics

[www.econ.upenn.edu/](http://www.econ.upenn.edu/)

Economics is the science of choice—the science that explains the choices made by individuals and organizations. A major in economics gives training in economic principles and in their application to problems of contemporary significance. Students preparing for a career in law, public service or business who want a liberal arts program rather than a more technical curriculum may find this major particularly rewarding.

Introductory Economics, Micro- (001) and Macro-Economics (002), are prerequisites for all other offerings of the Economics Department. Students interested in the Economics major will also need to have credit for one year of calculus equivalent to MATH 104 / 114 or 104 / 115. The department recommends that students take MATH 114 rather than 115.

## English

[www.english.upenn.edu/](http://www.english.upenn.edu/)

The Department of English offers over 100 courses every year, most of which have fewer than 30 students. Freshman seminars have no more than sixteen students, which allows for energetic discussions. The English major requires twelve courses, spread over several centuries and genres. Majors may concentrate on fiction, poetry or drama; they may focus on African-American writing, literary theory, law and literature, medieval literature or one of many other areas. Many students choose to focus on cinema studies or creative writing.

Good starting points for any student interested in an English course are the courses numbered 100-104, as well as the freshman seminars. Course descriptions can be found on the department's website.

## Environmental Studies

[www.sas.upenn.edu/earth/eesmajor/programs/environment.html](http://www.sas.upenn.edu/earth/eesmajor/programs/environment.html)

Many contemporary problems of environmental quality are so complex that modern society and technology have not yet been able to coordinate efforts to reach satisfactory solutions. There is thus an urgent need for individuals to be well versed in one discipline (e.g., geology, ecology, political science, history, etc.) and to be able to apply that discipline directly to environmental problems by being sensitized to the contributions that other disciplines can make.

Graduates of the program are prepared for professions directly or indirectly involved with problems of environmental quality, and may go on to study in their areas of concentration, in formal programs of environmental studies or in medical, law or other professional schools. In many cases, a student's career objectives are best realized by taking a double major in environmental studies and a specific area of concentration.

Freshmen interested in Environmental Studies should begin with ENVS 200: Introduction to Environmental Analysis.



## Fine Arts

[www.undergradfinearts.org/](http://www.undergradfinearts.org/)

Visual thinking is as integral to the life of the mind as verbal and numerical discourse. The major in Fine Arts is based upon the premise that an education in liberal studies should include the challenge of learning to see. Further, the education of the artist is dramatically improved by an education in liberal studies.

This program provides opportunities for intellectual and technical growth through studies in visual formulation and visual articulation.

Courses appropriate for first-year students (and requiring no prior training) include FNAR:

- 061 Film/Video I
- 065 Cinema Production
- 123 Drawing I
- 142 3-D Design
- 145 Sculpture I
- 211 Color
- 222 Big Pictures: Mural Art
- 231 Painting I
- 243 Figure Sculpture I
- 251 Printmaking: Intaglio
- 252 Printmaking: Relief and Screen Printing
- 257 Printmaking: Mixed Media
- 260 Beginning Ceramics: Handbuilding
- 261 Clay Wheel Throwing I
- 264 Digital Design Foundations
- 271 Photography I
- 280 Figure Drawing I

## French Studies

[ccat.sas.upenn.edu/romll/french/french.html](http://ccat.sas.upenn.edu/romll/french/french.html)

The French language and French civilization have long been dominant influences on world culture and France has played a major role in world history. After English, French is the second truly global language, spoken not only in Europe (France, Belgium, Switzerland) but also in North America, the Caribbean, South America, Africa, Southeast Asia and the Pacific. A sound knowledge of the French language and culture is therefore of great advantage to students majoring in diverse areas (political science, international relations, literature, cinema, art history, psychology).

Courses appropriate for first-year students include FREN:

- 212 Advanced Grammar and Composition
- 221 Introduction to French Literature

Students must complete FREN 140 or the equivalent through A.P. or placement testing before taking 200-level courses in French.

Note: Students may combine French Studies with Hispanic or Italian Studies to complete a Romance Languages dual major.

## Gender, Culture and Society

[www.sas.upenn.edu/wstudies/](http://www.sas.upenn.edu/wstudies/)

Gender, Culture and Society is an interdisciplinary major and minor within the Women's Studies program that offers opportunities to study the role of gender and sexuality in human societies.

Courses appropriate for first-year students include:

- GSOC 002 Gender and Society
  - 090 Topics in Women and Literature: Gender, Sexuality and Literature
  - 149 Law and Social Policy on Sexuality and Reproduction
- SOCI 122 The Sociology of Gender
- 235 Psychology of Women

## Geology

[www.sas.upenn.edu/earth/leesmajor/programs/geology.html](http://www.sas.upenn.edu/earth/leesmajor/programs/geology.html)

Geology is a dynamic and rapidly evolving physical science. The theory of plate tectonics gives new meaning and new impetus to areas of investigation such as mineralogy, petrology, volcanology, stratigraphy, economic geology and paleontology. Due to its interdisciplinary nature, geology includes subjects as varied as environmental geology, evolutionary biology, solid-state chemistry, oceanography, mineral economics and geochronology.

Courses appropriate for first-year students include GEOL:

- 100 Introductory Geology
- 111 Introductory Geology Lab
- 125 Earth and Life Through Time

## Germanic Languages and Literatures

[ccat.sas.upenn.edu/german/](http://ccat.sas.upenn.edu/german/)

German art, literature, music, philosophy, religion and research in the sciences have profoundly influenced the cultural traditions of other countries. The political events of Germany's past and present frequently affected

the entire world. The study of German culture and literature enables students to understand the spirit of Germany, to trace its roots, to comprehend the cross-currents in its thinking, and to experience the contributions of German poets, novelists, film-makers and authors.

The Department offers language courses in German, Dutch, Swedish and Yiddish, as well as Yiddish literature both in Yiddish and in English translation.

Courses appropriate for first-year students include GRMN:

- 003 Censored! (Freshman Seminar)
- 011 Bad Taste (Freshman Seminar)
- 215 Conversation and Composition
- 216 Introduction to Literature
- 237 Berlin
- 242 Fantastic and Uncanny in Literature
- 246 Heroes, Minstrels, Knights
- 253 Freud
- 256 The Devil's Pact
- 257 Nazi Cinema
- 269 Introduction to German Culture

## Health and Societies

[ccat.sas.upenn.edu/hsoc/](http://ccat.sas.upenn.edu/hsoc/)

The interdisciplinary Health and Societies Program offers a major designed to make undergraduates a part of the network of scholars and institutions at Penn that share a focus on health, the social sciences and the humanities. Building upon a long tradition of research and teaching excellence in these areas, the major allows students to explore serious intellectual questions while acquiring the skills necessary for 21st-century health care and public health decision-making, as well as careers in law, government, journalism, and business.

Courses appropriate for first-year students include HSOC:

- 002 Medicine in History
- 010 Health and Societies
- 145 Comparative Medicine
- 150 American Health Policy
- 175 Medical Sociology

## Hispanic Studies

[ccat.sas.upenn.edu/roml/spanish/spanish.html](http://ccat.sas.upenn.edu/roml/spanish/spanish.html)

The knowledge of Hispanic cultures gives students the ability to communicate in the third-most-spoken language of the world. The demographic,

economic and political realities of the United States, the articulation of a mainstream English culture with an ever-increasing diversity of Hispanic and Latino cultures, and the ongoing forging of strong cultural and economic ties throughout the Americas have moved Spanish out of the bounds of the category of foreign language and culture in this country.

Courses appropriate for first-year students include SPAN:

- 202 Advanced Spanish  
(pre-requisite: SPAN 140 or the equivalent through A.P. or placement)
- 208 Business Spanish I
- 212 Advanced Spanish Syntax  
(prerequisite: SPAN 202 or equivalent)
- 219 Texts and Contexts  
(prerequisite: SPAN 212)

Note: Students may combine Hispanic Studies with French or Italian Studies to complete a Romance Languages dual major.

## History

[www.history.upenn.edu/](http://www.history.upenn.edu/)

The Department of History offers a variety of courses dealing with the political, social, diplomatic, intellectual, economic and cultural history of the Americas, Europe, Asia and Africa, from the early medieval period to the present. The department seeks to give undergraduates both specific mastery of particular times, places and aspects of the human condition, and the critical skills to think historically about both long-term and modern phenomena, emphasizing the dynamics of change and continuity over time.

The department offers introductory survey courses in HIST:

- 001, 002 European History
- 003, 004 Asian History
- 010, 011 World History
- 020, 021 American History

There are also introductory courses that cover other regional and cultural areas including HIST:

- 030, 040 Medieval and Early  
Modern European History
- 048, 049 Russian History
- 050, 051, 053 British History
- 070, 071 Latin American History
- 075, 076 African History
- 080, 081, 082, 083 Middle Eastern History
- 090, 091 Japanese History

096, 097	Chinese History
120, 121	Korean History
126, 127, 128	Modern European History
133, 134	French History
139, 140, 141	Jewish History
155	Asian American History
168, 169	History of American Law
170, 171	The American South
176, 177	African American History
189	Egyptian History
345, 346	American Women's History

## History of Art

[www.arthistory.upenn.edu/](http://www.arthistory.upenn.edu/)

The Department of the History of Art invites students to explore the connections between the forms and meanings of visual media as part of the histories of human civilizations. As a humanistic discipline, history of art emphasizes the scholarly investigation of the visual arts rather than technical training. The program provides a solid foundation for a general arts and sciences education and for careers in communications, public relations and other fields where engagement with images and texts is paramount. Courses in the history of art also complement majors in literature, history, religion, area studies, cinema studies, studio art and others.

Freshmen are encouraged to take ARTH 001 and/or ARTH 002, two integrative gateway courses that take advantage of all of the resources of a great university and the vibrant artistic city of Philadelphia.

## International Relations

[www.sas.upenn.edu/irp/](http://www.sas.upenn.edu/irp/)

The International Relations Program provides a multidisciplinary approach to the ways in which governments, private groups and individuals relate to one another in the global political and economic systems. The major provides a solid grounding in the methodologies of political science, history and economics, but also allows students maximum flexibility to pursue special interests.

The major does not require foreign language training beyond the College's Foreign Language Requirement, though an extra semester of foreign language, as well as study abroad, is strongly encouraged. Students pursuing honors in the major must complete at least one semester of foreign language study beyond the proficiency requirement level.

Prospective majors must complete four prerequisite courses prior to declaring the major:

Offered in fall 2008:

ECON 001 Introductory Microeconomics, *and*  
002 Introductory Macroeconomics

Additional prerequisite courses:

PSCI 001 Introduction to Political Science, *or*  
050 World Politics, *or*  
110 Comparative Politics

HIST 002 Europe and the Wider World, *or*  
004 Asia and the Wider World, *or*  
011 World History

## International Studies and Business

[www.upenn.edu/huntsman/](http://www.upenn.edu/huntsman/)

The Huntsman Program in International Studies and Business is a four-year interdisciplinary program integrating business education, advanced language training and a liberal arts education. Huntsman students specialize in the area of the world in which their target language is spoken and graduate with a professional education and an understanding of the political, economic and cultural complexities in the world. Huntsman graduates earn two degrees, a Bachelor of Arts in International Studies from the School of Arts and Sciences and a Bachelor of Science in Economics from the Wharton School. Students apply to the Huntsman Program when they apply to Penn; it is not possible to transfer into the program after matriculation.

## Italian Studies

[ccat.sas.upenn.edu/roml/italian/italian.html](http://ccat.sas.upenn.edu/roml/italian/italian.html)

Italian Studies offers courses in language, literature, film, linguistics, cultural studies and civilization for students with or without a background in Italian. At the core of this program is the study of the Italian language and civilization, understood not only in the narrow sense of verbal communication, but also in the larger sense of textual messages—literary, cinematic, historical, art-historical and mass-cultural.

There are two concentrations for majors and minors, one in Italian Literature and one in Italian Culture. The Italian Culture concentration allows students to earn credits in Italian Studies even before having completed the language requirement. Students may combine Italian Studies with Hispanic or French Studies to complete a Romance Languages dual major.

## Jewish Studies

[ccat.sas.upenn.edu/jwst/](http://ccat.sas.upenn.edu/jwst/)

Jewish Studies is an interdepartmental program that allows students to study the Jewish experience from the perspectives of language (Hebrew and Yiddish), literature in translation and in the original languages, the history and culture of the Jewish people, the exploration of Jewish law, and the role gender plays in Judaism. The goal of the major is the acquisition of the knowledge and skills necessary to integrate these perspectives and varieties of knowledge in order to understand the Jewish experience.

Majors should begin the study of Hebrew or Yiddish as soon as possible. Courses appropriate for first-year students include JWST:

- 031 Beginning Yiddish I
- 033 Intermediate Yiddish I
- 051-52 Elementary Modern Hebrew I/II
- 053-54 Intermediate Modern Hebrew III/IV
- 100 The Binding of Isaac
- 101 Translating Cultures  
(Freshman Seminar)
- 102 (401) Topics in Jewish Literature:  
Childhood in Israeli Literature and Film
- 102 (402) Topics in Jewish Literature:  
Women and Jewish Literature
- 123 Introduction to Judaism
- 150 Introduction to the Bible
- 151 Great Books of Judaism
- 157 History of Jewish Civilization II
- 257 Studies in Rabbinic Literature  
(Knowledge of Hebrew required)
- 260 Jewish Folklore

## Latin American and Latino Studies

[www.sas.upenn.edu/lals/](http://www.sas.upenn.edu/lals/)

This program allows students to approach Latin American and Latino cultures in all their diversity of expression—not only “high culture,” but also folk and other forms, from pre-Columbian times to the present, from Rio de Janeiro to New York and beyond. Ibero-America is a focal point from which undergraduates may reach out toward scholarly research on the pre-Columbian societies of the Americas, Spain and Portugal, the non-Hispanic Caribbean and Latino communities in the United States.

Courses appropriate for first-year students include LALS:

- 060 Introduction to Latina/o Literature
- 070 Colonial Latin America

## Life Sciences and Management

[www.upenn.edu/lsm/](http://www.upenn.edu/lsm/)

This program is administered jointly by the School of Arts and Sciences and the Wharton School. Through an integrated curriculum that combines bioscience and business studies, as well as internships in laboratory and business settings, LSM prepares students for intellectually and managerially exciting careers in the life sciences. The program is aimed at students with interests in health care; biomedical, agricultural or environmental research and development; public policy; and/or the financial and strategic management of activities in the life sciences sector.

Students apply to the program when they apply to Penn for freshman admission. The program does not currently take transfer applications.

## Linguistics

[www.ling.upenn.edu/undergrad/ugrad.html](http://www.ling.upenn.edu/undergrad/ugrad.html)

Linguistics explores the methods and findings of the scientific study of human language and its relationships to cognition, society and history. Linguistic training is relevant to work in anthropology, philosophy, psychology, and language and literature, as well as to careers in such fields as education, computer science and law.

Though not a formal prerequisite, students without prior study in the field are encouraged to take LING 001, Introduction to Linguistics, in the freshman year. Students may also approach the subject by enrolling in a freshman seminar such as LING 054, Bilingualism in History, or LING 058, Language and Cognition.

Additional courses appropriate for first-year students include LING:

- 102 Introduction to Sociolinguistics
- 103 Language Structure and Verbal Art
- 105 Introduction to Cognitive Science
- 106 Introduction to Formal Linguistics
- 115 Writing Systems
- 135 Psychology of Language

## Logic, Information and Computation

[logic.sas.upenn.edu/](http://logic.sas.upenn.edu/)

Logic is one of the core disciplines in investigations of information and computation, and it plays a major role in advances in computer security, database technology, networking and software engineering. Logic has expanded its role within mathematics beyond foundational studies, and now enjoys rich connections with areas as diverse as algebra, analysis and combinatorics. This program provides students with a strong background to pursue computational aspects of the natural, biological and social sciences, as well as preparing them for careers in information technology.

## Mathematics

[www.math.upenn.edu/](http://www.math.upenn.edu/)

Mathematics is at the core of modern theoretical science. For centuries, it has provided an expressive language as well as a theoretical framework for advances in the physical sciences, and it has become central in the life and social sciences. Most recently, computer science has provided fertile ground for the development of new mathematical ideas and techniques. The traditional core areas of mathematics are well represented at Penn, as are developing areas. Penn is one of the world's leading centers in the application of logic to theoretical computer science.

Mathematics majors enjoy a high degree of flexibility to pursue specialized mathematical subjects or to study how mathematics is used in other disciplines.

See information on page 25 for appropriate course selection.

## Modern Middle East Studies

[mec.sas.upenn.edu/mmes.html](http://mec.sas.upenn.edu/mmes.html)

There has rarely been a time in which an in-depth understanding of the languages, cultures, history and politics of the contemporary Middle East has been more important. This interdisciplinary major is designed to allow students to specialize in the Middle East as a region of the world and as a human experience by combining course work using both social scientific and humanistic approaches, underpinned by relevant language skills. Students will work with faculty committed to supporting interdisciplinary, applied, research-oriented advanced study.

The major gives students opportunities to work on problems of politics, policy, history, ideology, social thought, economic development and international relations.

## Music

[www.sas.upenn.edu/music/](http://www.sas.upenn.edu/music/)

The study of music can serve as the central focus of a general liberal arts education as well as a platform for students who aspire to graduate training in music history, theory, ethnomusicology or composition. The department offers a thorough introduction to the history and theory of music and to its meanings in different cultures around the world.

Courses appropriate for first-year students that do not require advanced knowledge of music notation include MUSC:

- 021 Introduction to the History of Western Music
- 030 History of Opera
- 040 History of the Symphony
- 044 Interpreting Popular Music
- 050 World Musics and Cultures
- 075 History of Jazz

Students wishing to learn to read music and gain a knowledge of beginning theoretical topics, as well as those wishing to begin the required theory courses for the major (or the one required course for the music minor) should take MUSC 070, Theory and Musicianship I. (MUSC 070 also counts as an elective toward the Jazz and Popular Music minor.)

## Near Eastern

## Languages and Civilizations

[www.sas.upenn.edu/nelc/](http://www.sas.upenn.edu/nelc/)

Near Eastern Languages and Civilizations focuses on the study of the ancient and modern civilizations of the Near/Middle East, addressing the civilizations of Mesopotamia/Iraq, Egypt, Israel, Syria, Arabia, Persia/Iran and Anatolia/Turkey. The program offers broad-based, culturally integrated general education courses on cultures, literatures, religions and history.

The department offers courses in Sumerian, Akkadian, Egyptian, Aramaic, Hebrew, Arabic, Persian and Turkish.

Students interested in a major or minor are strongly encouraged to begin language study as soon as possible.

*continued*



Non-language freshman seminars appropriate for first-year students include NELC:

- 036 Middle East Through Many Lenses
- 047 Magical Science: Sages, Scholars and Knowledge in Babylon and Assyria
- 105 Problems in Folklore

Additional non-language courses appropriate for first-year students are NELC:

- 031 History of the Middle East Since 1800
- 038 Narratives: Africa and Asia
- 052 History of Jewish Civilization II
- 068 Introduction to the Ancient Near East
- 118 Iranian Cinema: Gender, Politics and Religion
- 150 Introduction to the Bible
- 158 Jewish Literature in the Middle Ages (In Translation)
- 159 Modern Hebrew Literature and Culture (In Translation)
- 185 Islamic Civilization

## Philosophy

[www.phil.upenn.edu/](http://www.phil.upenn.edu/)

Philosophy seeks to illuminate fundamental aspects of the world, of our relation to, and knowledge of, the world and of our own nature as rational, purposive and social beings. A philosophical education is, in large measure, intended to furnish some grasp of what is involved in developing and defending questions and positions of a general and fundamental nature.

A number of generally applicable intellectual skills and habits are cultivated through the study of philosophy: close reading of texts, the extraction of positions and arguments, and the construction and criticism of lines of reasoning. The development of these skills helps equip one for any profession in which creative thought and critical discrimination are called for, including medicine, business, journalism and government and in particular, law.

Courses appropriate for first-year students include PHIL:

- 001 Introduction to Philosophy
- 002 Ethics
- 003 History of Ancient Philosophy
- 004 History of Modern Philosophy
- 005 Formal Logic
- 008 The Social Contract

## Philosophy, Politics and Economics

[www.sas.upenn.edu/ppel/](http://www.sas.upenn.edu/ppel/)

This interdisciplinary program allows students to study a variety of comprehensive analytical frameworks developed to understand and justify political and economic structures, particularly constitutional democracy and the market system. It also allows students to examine human behavior using tools that lie at the intersection of psychology, economics and philosophy, using theoretical and laboratory methods. The major prepares its graduates for careers in public policy, public service, business and law. It also offers valuable preparation for graduate study in any of the participating disciplines.

## Physics and Astronomy

[www.physics.upenn.edu/](http://www.physics.upenn.edu/)

Physics and astronomy are fundamental sciences aimed at discovering the basic principles that govern our universe. Physicists study the interplay between space, time, matter and energy. Complex behavior in nature is explained in terms of elementary relations between constituent elements and the forces that bind them. The phenomena examined by physicists occur over distances ranging from subatomic scale (elementary particle physics) to human scale (condensed matter physics and biological physics) to cosmic scale (astrophysics and cosmology). The subject matter of astronomy encompasses the physical universe beyond the Earth: the solar system, stars, galaxies, galaxy clusters and superclusters, quasars and the large-scale structure of the universe. In both physics and astronomy, new instruments and technologies are revealing unexpected phenomena that present exciting scientific challenges.

Courses that are appropriate as an introduction to the major are the PHYS 150/151 sequence. Students who are likely to major in Physics are encouraged to seriously consider the Honors Sequence, PHYS 170/171. The PHYS 101/102 sequence is appropriate for students interested in the biological sciences. Students interested in the Astrophysics concentration are also encouraged to enroll in ASTR 011/012.

The department also offers freshman seminars and other courses that require no previous exposure to physics. Examples include ASTR:

- 001 Survey of the Universe
- 003 The Solar System
- 005 Galaxies and the Universe
- 006 Life in the Universe



- 007 The Big Bang and Beyond  
and PHYS:  
016 Energy, Oil, and Global Warming  
137 Community Physics Initiative

## Political Science

[www.ssc.upenn.edu/polisci/](http://www.ssc.upenn.edu/polisci/)

The discipline of political science explores systematic approaches to understanding politics in various forms and settings, ranging from American political institutions and processes to the politics of various countries or world regions, the sources of order and change in international relations, and ancient and modern political thought. These topics are addressed in courses typically classified under the four standard fields of American politics, comparative politics, international relations and political theory.

In addition to freshman seminars, courses appropriate for first-year students include, but are not limited to the overviews of the four main subfields, PSCI:

- 110 Introduction to Comparative Politics  
130 Introduction to American Politics  
150 International Relations in Theory and Practice  
180 Ancient Political Thought  
181 Modern Political Thought

In addition, freshmen are regularly admitted to more specialized courses that do not require prerequisites (these include most courses through the 200-level and higher-level seminars where the instructor gives permission to enroll on a case-by-case basis).

## Psychology

[www.psych.upenn.edu/](http://www.psych.upenn.edu/)

The Psychology major is designed to introduce students to our current understanding of how organisms perceive, learn, think and interact with one another, how they develop, how they are motivated and how, individually and as members of a species, they may be compared with one another. The major provides a balanced treatment of the central phenomena in the field, taking into account the methods from which our knowledge is derived and the conceptual frameworks that organize the discipline.

The major program, which divides courses into three subfields—neural, cognitive and social/clinical—is designed to provide a coherent and integrated intellectual experience that can serve as a foundation for advanced graduate work,

or for careers in many fields, including medicine, law, business or the sciences. All students begin their psychology studies with PSYC 001, Introduction to Experimental Psychology.

## Religious Studies

[ccat.sas.upenn.edu/rs/](http://ccat.sas.upenn.edu/rs/)

The study of religion is a diversified and multifaceted discipline which involves the examination of both specific traditions, beliefs and practices as well as its wider study as a central phenomenon of human existence. It includes cultures from around the world, ancient as well as modern, in an inquiry that involves a variety of textual, historical, phenomenological, social scientific, theological and philosophical methodologies. Religion scholars ask not whether certain beliefs are true, but what they mean to those who hold them to be true, how they came to have a particular form and content, and what impact they have on their intellectual and social environments.

Courses appropriate for first-year students include RELS:

- 011 Religion and Secular Values:  
The American Jesus  
102 Science and the Sacred  
123 Introduction to Judaism  
133 Christian Origins

## Science, Technology and Society

[hss.sas.upenn.edu/mt-static/stsc/](http://hss.sas.upenn.edu/mt-static/stsc/)

The modern world is built on a foundation of science and technology. Understanding how science works, how technological innovation happens, and how both relate to larger social, political and economic developments is an essential skill for professionals in almost every occupation.

This highly interdisciplinary program includes courses in the history and sociology of science, technology, medicine, as well as in the natural and social sciences. Students who major in Science, Technology and Society (STSC) will acquire both a broad liberal arts education as well as specific preparation for careers in knowledge-based occupations such as law, public policy, business, medicine and journalism.

Courses appropriate for first-year students include STSC:

- 001 The Emergence of Modern Science  
002 Medicine in History  
003 Technology and Society  
010 Health and Societies

## Slavic Languages and Literatures

[ccat.sas.upenn.edu/slavic/](http://ccat.sas.upenn.edu/slavic/)

The Department of Slavic Languages and Literatures offers a major, a minor and a language certificate in Russian. Additionally, with the support of the Penn Language Center, the department offers courses in the Ukrainian, Czech and Polish languages. The department also offers a series of courses for students who have spoken Russian at home and wish to gain literacy and/or improve their language skills, or to pursue the study of Russian literature and culture in Russian.

The program is flexible and well suited to students wishing to complement another field of study. The program is also well suited to students preparing for law or medical school, or those contemplating careers in international business, teaching, governmental and foreign service, or journalism.

Courses offered in English and appropriate for first-year students include RUSS:

- 130 Russian Ghost Stories (Freshman Seminar)
- 136 Portraits of Russian Society
- 145 Russian Literature in Translation I (1800-1870)
- 155 Russian Literature in Translation II (1870-present)
- 165 Russian and East European Film
- 190 Terrorism: Russian Origins and 21st-Century Methods

Students with no prior study in the language may consider:

- RUSS 001 Elementary Russian I/II
- SLAV 501 Elementary Polish I
- 530 Elementary Czech I
- 590 Elementary Ukrainian I

Students who spoke Russian at home while growing up may consider RUSS:

- 360/361 Literacy in Russian I/II
- 467 Classic Russian Literature Today

## Sociology

[www.ssc.upenn.edu/soc/](http://www.ssc.upenn.edu/soc/)

The study of sociology provides a critical understanding of the organization of social groups from families, friendship circles, and neighborhood communities to political parties, nations and entire societies. Sociology attempts to identify and explain patterns of social life and human behavior by emphasizing how large-scale social phenomena like racial inequality, globalization and cultural change impact the everyday experiences of individuals and vice versa. Sociology also introduces students to the conceptual and methodological tools of social science research, including ethnography, social statistics, network analysis and demographic methods. It provides a background for careers in law, management, journalism and media, criminology, medicine, education and applied social research.

Courses appropriate for first-year students include SOCI:

- 001 Introduction to Sociology
- 002 Social Problems and Public Policy
- 004 The Family
- 006 Race and Ethnic Relations
- 010 Social Stratification
- 011 Urban Sociology
- 137 Sociology of Media and Popular Culture

## South Asia Studies

[www.southasia.upenn.edu/](http://www.southasia.upenn.edu/)

This program offers students a multi-disciplinary exposure to the cultures and languages of India, Pakistan, Bangladesh, Sri Lanka and Afghanistan and courses related to the South Asian diaspora. The department offers and cross-lists courses in a wide range of disciplines, including history, philosophy, religion, art, music, anthropology, sociology, political science and economics. Penn's South Asia language program is one of the largest in the country, and covers the major classical and modern languages of the subcontinent.

Courses appropriate for first-year students include SAST:

- 002 The City in South Asia (spring)
- 003 India and South Asia: Pre-Modern India
- 005 Performing Arts in South Asia
- 006 Hindu Mythology (spring)
- 052 Indians Overseas: Global View
- 057 Planning to be Offshore?

## Theatre Arts

[www.sas.upenn.edu/theatrearts/](http://www.sas.upenn.edu/theatrearts/)

Theatre Arts offers a wide range of courses in all aspects of theatre, including acting, directing, design, playwriting, dramatic literature, theatre history and theories of performance. Students may also receive credit through THAR 350, Rehearsal and Performance, by acting in, or working on, theatre productions mounted by this program. Theatre Arts welcomes all students to take part in our course and production work, those wishing to major or minor, as well as those who wish to take one or two courses as part of a complete liberal arts education.

Courses appropriate for first-year students include THAR:

- 100 Introduction to Theatre
- 110 Theatre, History, Culture I
- 111 Theatre, History, Culture II
- 125 The Play: Structure, Style, Meaning

The Theatre Arts Program offers two freshman seminars, THAR:

- 120 Fundamentals of Acting (fall and spring)
- 176 Philadelphia Theatre Experience (fall)

Prospective majors with an interest in practical theatre should begin to work in the cast or crew of program-sponsored production activities as soon as they arrive at Penn.

## Urban Education (minor only)

[www.gse.upenn.edu/degrees\\_programs/ugprog.php](http://www.gse.upenn.edu/degrees_programs/ugprog.php)

The Urban Education minor provides students with opportunities to explore the interrelationships between urban issues and educational practice, research and policy in order to work toward equity and excellence in the education of students in city schools. The program reflects current national demands for education professionals to make instructional, curricular, assessment, administrative, policy and research decisions that are not only grounded in understanding of local communities and educational theory, but also informed by a liberal arts-based background.

Interested freshmen should begin with URBS 202, Urban Education, as their first course.

Additional courses appropriate for first-year students include:

- PSYC 180 Developmental Psychology
- EDUC 513 Development of the Young Child
- 522 Psychology of the African-American
- 561 Adolescent Development

## Urban Studies

[www.sas.upenn.edu/urban/](http://www.sas.upenn.edu/urban/)

Urban Studies is an interdisciplinary major that offers students an opportunity to think and learn about cities in an informed, disciplined and integrated way. Majors take courses that introduce them to a variety of perspectives on the origins, development and nature of cities. The program stresses the application of theory to practice with an internship for credit in which students work closely with a community group, public agency, non-profit or private organization in the city.

The Urban Studies Program offers two freshman seminars each year, URBS:

- O12 History and Politics of Place (spring)
- O10 Homelessness and Urban Inequality (fall)

Additional fall courses appropriate for first-year students include URBS:

- 103 Emerging Industrial Metropolis
- 112 Urban Sociology
- 121 Origins and Cultures of Cities
- 139 Ancient Civilizations of the World
- 178 Urban University–Community Relations
- 202 Urban Education

## Visual Studies

[www.arthistory.upenn.edu/vlst/](http://www.arthistory.upenn.edu/vlst/)

We live in an increasingly visual culture. The visual studies major prepares students for acting in and interpreting this culture through a multidisciplinary course of study, connecting the theory, practice and culture of seeing. The major serves as a liberal arts preparation that develops visual literacy, studio skills and knowledge of visual science and visual theory. It provides strong and distinctive preparation for continuing on to graduate or professional training in several fields, including philosophy, perceptual psychology, history of art, fine arts and architecture.

Courses appropriate for first-year students include VLST:

- 101 Eye, Mind and Image
- 102 Two Dimensions: Form/Meaning
- 103 Three Dimensions: Time/Space

## Credits Needed for Graduation by Major

The number of credits (c.u.) required for graduation is always between 32 and 36, and is usually computed by adding 20 to the number of courses required for the major.

Major	C.U. for Major	C.U. Outside Major	Total C.U. for Graduation
African Studies	12	20	32
Africana Studies	12	20	32
Anthropology	14	20	34
Architecture	16	20	36
Biochemistry	18	18	36
Biological Basis of Behavior	18.5	17.5	36
Biology*	16.5	19.5	36
Biophysics	20	16	36
Chemistry	17	19	36
Cinema Studies	13	20	33
Classical Studies	12	20	32
Cognitive Science	16	20	36
Communication	14	20	34
Comparative Literature	14	20	34
Criminology	14	20	34
East Asian Area Studies	12	20	32
East Asian Languages and Civilizations	14	20	34
Economics	12	20	32
English	12	20	32
Environmental Studies	15	20	35
Fine Arts	16	20	36
French Studies	12	20	32
Gender, Culture and Society	13	20	33
Geology	15	20	35
Paleobiology	18.5	17.5	36
German	12.5	20	32.5
Health and Societies	14	20	34
Hispanic Studies	12	20	32
History	12	20	32
History of Art	13	20	33
Individualized Major	14	20	34

\* Some concentrations in this major will require more than this number of c.u. to complete; in these cases fewer courses outside the major will be required, but the total graduation requirement will remain 36 c.u.

## Credits Needed for Graduation by Major

Major	C.U. for Major	C.U. Outside Major	Total C.U. for Graduation
International Relations	14	20	34
International Studies/Business	14	20	34
Italian Studies	12	20	32
Jewish Studies	14	20	34
Latin American and Latino Studies	12	20	32
Linguistics	14	20	34
Logic, Information and Computation	18	18	36
Mathematics	13	20	33
Music	14	20	34
Modern Middle East Studies	12	20	32
Near Eastern Languages and Civilizations	14	20	34
Philosophy	12	20	32
Humanistic Philosophy	16	20	36
Philosophy and Science	16	20	36
Philosophy, Politics and Economics	16	20	36
Physics and Astronomy*	17.5	18.5	36
Political Science	12	20	32
Psychology	13	20	33
Religious Studies	12	20	32
Romance Languages (two languages)	18	18	36
Science, Technology and Society	14	20	34
Slavic Languages and Literature (Russian)	12	20	32
Sociology	14	20	34
South Asia Studies	12	20	32
Theatre Arts	14	20	34
Urban Studies	14	20	34
Visual Studies	15	20	35

\* Some concentrations in this major will require more than this number of c.u. to complete; in these cases fewer courses outside the major will be required, but the total graduation requirement will remain 36 c.u.

The numbers above represent minimum credits required; depending on their individual situations, some students may need more than this in order to finish their degree program. Students with any questions about their graduation requirement should meet with a College advisor.

A minimum of 16 c.u. of the courses outside the major must be taken in departments within the School of Arts and Sciences.

Students who are completing more than one major must use their largest major to calculate the required graduation credits. For example, a student majoring in English (12 c.u.) and Fine Arts (16 c.u.) needs at least 36 c.u. to graduate.

Students who are completing a dual degree with the College and another undergraduate school at Penn must meet with advisors in both schools to determine their graduation requirement.

# GENERAL POLICIES AND PROCEDURES

## Class Standing

A student's class standing is determined by the number of course units a student has accumulated. In addition to course work taken at Penn, this will include A.P. credit, transfer credit from other institutions and credit issued for departmental examinations. Course work in progress also will be taken into consideration in determining a student's classification for Advance Registration for a future term.

For students in the College, the classification is as follows:

Freshman:	less than 8.00 c.u.
Sophomore:	from 8.00 - 15.99 c.u.
Junior:	from 16.00 - 23.99 c.u.
Senior:	from 24.00 c.u.

## Academic Recognition

### Dean's List

The Dean's List citation appears on the transcript and is awarded annually to any student who achieves a combined g.p.a. of 3.7 for the fall and spring semesters, provided that during the two semesters he or she has:

- Completed 6 or more c.u. for letter grades
- Received no grades lower than C
- Completed all courses on time with no Incompletes, NR's or GR's (see page 58)
- Been free from disciplinary action during the two semesters.

### Latin Honors

Latin Honors are awarded to those graduating seniors who have achieved a cumulative grade point average at or above each of three levels:

3.80 or higher:	summa cum laude
3.60 to 3.79:	magna cum laude
3.40 to 3.59:	cum laude

Students who are found by the Office of Student Conduct to have violated the Code of Academic Integrity of the University of Pennsylvania are not eligible for Latin honors.

## Phi Beta Kappa

The Delta Chapter of Phi Beta Kappa was founded at the University of Pennsylvania in 1892. The Electoral Board meets every spring to elect new students who have distinguished themselves through undergraduate research and by breadth of study in the liberal arts.

### Selection Process

Students may not apply for Phi Beta Kappa. Those juniors with a 3.85 g.p.a. or higher and seniors with a 3.7 g.p.a. or higher by the end of the fall semester are automatically considered and their transcripts are evaluated by the Board, which also solicits letters of recommendation for eligible students.

The records of students who graduated the previous year are reviewed, and a number of these students may be elected as well. Therefore, each student is granted at least two opportunities for review by the committee.

Students who have Incompletes on their transcripts may be denied membership. Students must have a minimum of 16 completed credits in order to be eligible.

It is the practice of the Delta Chapter to elect no more than eight percent of the graduating class each year. A small number of juniors is also selected at the spring meeting.

### Eligibility

In addition to grades, the committee looks for independent research, participation in honors programs, advanced work in the major and in cognate disciplines and evidence of intellectual rigor in an undergraduate program.

### Notification

Students are notified of election by letter at the end of the spring term, prior to graduation.

Questions should be addressed to Dr. Janet Tighe, Secretary of the Delta Chapter.

## Honors in the Major

Students with a minimum g.p.a. of 3.0 may apply to their department or program for acceptance as honors majors. (Some majors will require higher g.p.a.'s.) Applications for major honors are usually taken in the first semester of the junior year. The requirements for honors majors vary from program to program and may include special courses and individual research on specialized subjects under the guidance of a



faculty advisor. In some departments additional credit is authorized for work done by honors candidates.

Students who complete an honors major will have this designation entered on their transcript.

## Athletic Eligibility

Like all student-athletes at Penn, College athletes must meet certain academic eligibility standards set by both the NCAA and the University.

In order to be fully eligible to compete in inter-collegiate athletics, students must keep their g.p.a. at or above a 2.0, maintain full-time student status, earn at a minimum 1.5 c.u. a term (important for student athletes who wish to study abroad) and complete a minimum of eight courses per academic year. Students whose academic performance falls below these standards may retain eligibility to compete by submitting an Academic Enhancement Plan. Student-athletes enrolled in the College are also required to have a declared major by the beginning of their junior year. Any questions about these or any other eligibility issues should be referred to Dr. Alice Kelley in the College Office.

## Academic Standing

The College expects all of its students to maintain good academic standing, which is defined as follows:

- The student must maintain a term and cumulative g.p.a. of 2.00 or higher.
- The student may not earn more than one Incomplete or F in a given semester.
- The student must complete at least a total of 6 c.u. over a period of two consecutive semesters (summers not included).

Students who do not fulfill these criteria will be placed on academic probation. There are several categories of probation:

### General Probation

Students on General Probation are required to see their academic advisor once a month while they are on probation.

While on General Probation, students must complete exactly 4 c.u. on time, with no grades of F, I, GR or NR and no more than one pass/fail course. (See page 58 for definitions of these grade types.) In addition, students on General Probation must achieve a minimum g.p.a. of 2.00 for that semester.

Students who fail to meet the requirements for recovery from General Probation as specified by the Committee on Undergraduate Academic Standing may be placed on Deferred Drop Probation or Dropped from the University rolls.

### Deferred Drop Probation

Students will be placed on Deferred Drop Probation if:

- They fail to meet the requirements for recovery from General Probation as specified by the Committee on Undergraduate Academic Standing, or
- Their academic semester g.p.a. is below 1.70.

Students on Deferred Drop Probation must achieve a minimum g.p.a. of 2.00 for that semester. If they do not, they may be dropped from the rolls.

In addition, all other rules pertaining to General Probation apply to Deferred Drop Probation.

### Incompletes Probation

Students with multiple Incompletes may be placed on Incompletes Probation or on a mandatory leave of absence (see page 50). This leave of absence prevents students from re-enrolling at Penn until all of the incomplete coursework has been finished and those courses' grades reported. This frequently entails at least one semester off from school.

In addition, all other rules pertaining to General Probation apply to Incompletes Probation. For more on Incompletes, see page 59.

### Dropped from the Rolls

Students may be dropped from the rolls by the Committee on Undergraduate Academic Standing if:

- They receive two or more F's in a given semester, or
- They fail to meet the terms of recovery from General Probation or Deferred Drop.

Students who have been dropped from the rolls are required to take a mandatory year off from Penn. They may not receive credit at Penn for courses taken at another institution during the term of the drop.

Students who have been dropped will be eligible for readmission after one full (calendar) year; a second drop is permanent.

## Readmission After Drop

A student in the College who has been dropped for scholastic deficiencies will not be considered for readmission within the calendar year following dismissal.

At the end of the term of the drop, the student may apply to the College Office for readmission. This application should take the form of a letter submitted to the College's Probation Officer. The letter should address the following issues:

- The academic and non-academic factors leading to the grades that occasioned the drop.
- How the student has occupied him- or herself while out of school, with particular attention to any jobs or other positions of responsibility.
- The student's plans both for completing his or her academic work and for seeking whatever support services are necessary.

In addition to this letter, the student should submit, if possible, a letter from a supervisor or someone else in a position to attest to the student's responsibility and maturity.

All applications and supporting materials for readmission must be submitted by August 1 for the fall semester, and December 1 for the spring semester.

## Leave of Absence

Students considering requesting a leave of absence should speak with an advisor in the College Office and keep the following in mind:

- Discontinuance of study without permission from the University does not constitute a leave of absence.
- Students must complete a form officially requesting the leave of absence. (Written parental approval is required for students under 18 years of age.)
- If a student requests a leave after the beginning of the semester, the normal drop and withdrawal deadlines apply.
- Students who request and receive a leave of absence after the first five weeks of the semester will receive the notation of W (withdrawal) after each course on their transcript.
- Students who request and receive a leave of absence after the 10th week of the semester will not be allowed to return to the University in the subsequent semester.
- A leave of absence beyond the 10th week of the semester will only be granted under extremely extenuating circumstances.

- Leaves of absence will normally be granted for a period of up to one year. In unusual circumstances and at the written request of the student, such leaves may be extended for no longer than one additional year.
- Students who remain on leave longer than two years and who do not respond to the University's attempts to contact them may be withdrawn from active status.

## Personal Leave of Absence

Students considering a leave of absence should:

- Contact the College Office, 215.898.6341 and make an appointment to speak with an assistant dean for advising or with a member of the CaseNet support team.
- Complete the Leave of Absence form.

The Director of Academic Services will consider the request.

## Medical Leave of Absence

Students requesting a leave of absence for medical reasons must provide proper documentation at the time of the leave request. Students will only be allowed to take a leave of absence after the withdrawal period (10th week) with proper medical documentation.

## Mandatory Leave of Absence

Students who accumulate two or more incomplete grades in a given semester may be placed on a mandatory leave of absence by the Committee on Undergraduate Academic Standing until such work is finished.

Students placed on mandatory leave must complete all outstanding course work before they are allowed to re-enroll and continue with new work.

Students on mandatory leave of absence may not receive credit at Penn for courses taken at another institution during the leave.

## Return from Leaves of Absence

### All Leaves of Absence

Students wishing to return from a leave of absence must send a written request no later than one month before the beginning of the semester of their return to the Director of Academic Services in the College Office. In order to be returned from leave in time to advance register, students must notify the Director of Academic Services by the beginning of Advance Registration.

### Additional Procedure for Medical Leave

Students who request a medical leave of absence will be required to obtain clearance from a treating physician before any return from leave is granted.

### Additional Procedure for Mandatory Leave

Students wishing to return from a mandatory leave of absence must have final grades posted for any prior incomplete work before the start of the semester in which they intend to enroll. Additional conditions for return from mandatory leave may be stipulated by the Committee on Undergraduate Academic Standing.

### Withdrawal from the University

A student who wishes to withdraw from the University must inform the College Office in writing. If a student withdraws after the fifth week of the semester, all course grades from that semester will be reported on the transcript as W (withdrawal).

### Tuition Refund

A student who withdraws from the College (or who is requested to withdraw for failure to maintain a satisfactory scholastic standing), or who is granted a leave of absence during either term of the academic year will be eligible for a reduction in tuition and fees in accordance with the conditions set forth below. The effective date of separation is the date the student files a written request for withdrawal or leave of absence.

A student who is required to withdraw because of a violation of University regulations will receive no tuition refund. For all other students, the percentage of the term charges will be adjusted as follows:

75% Request within the first two weeks of class

50% Request within the third and fourth weeks of class

0% Thereafter

In the case of students receiving financial aid, eligibility for the term will be redetermined based on actual charges and prorated allowances for living expenses.

For rules regarding reductions in residence and meal contract charges, contact the Housing and Dining Services Offices.

### Transfer Within the University

Students who wish to apply for an internal transfer to any of the four undergraduate schools should meet with an assistant dean in the College Office as well as with an advisor of the school they wish to enter. Students must indicate what course of study they plan to pursue in the new school. Transfer requests must be filed through the College Office; the request is sent to the other school for consideration.

Students are not eligible for transfer until they have completed 8 c.u. (or two semesters, whichever comes later) at Penn.

Applications for internal transfer will not normally be considered after the end of the sophomore year.

Students applying for internal transfer must be in good academic standing and should have no NR's, GR's or I's on their record (see page 58).

### Transfer into the Wharton School

Students should be aware that the Wharton School requires a 3.4 minimum g.p.a. for transfers, though students should have closer to a 3.7 g.p.a. in order to be competitive. Generally, very few students will be accepted for transfer into the Wharton School.

- If applying at the end of their freshman year, students must have completed ECON OO1 and OO2 and MATH 104.
- If applying in the middle of sophomore year, students must have completed BPUB 250 or ECON 101 as well as STAT 101 and ACCT 101.
- In order to apply at the end of the sophomore year, students must have taken STAT 102 and ACCT 102 as well.

# POLICIES GOVERNING THE CURRICULUM

For additional policies and procedures governing the curriculum, see [www.college.upenn.edu/curriculum/2010/](http://www.college.upenn.edu/curriculum/2010/).

For listings of courses that fulfill College requirements, see the College website or the Course Search on Penn InTouch.

Double counting refers to the practice of using one course to satisfy more than one requirement. The course must be one that has been approved for both requirements. Students should be aware that the policies governing double counting vary from requirement to requirement (and from department to department in the case of majors).

## Foundational Approaches

With the exception of the Foreign Language Requirement, none of these requirements may be satisfied with Advanced Placement credit (including A-Levels, I.B., and other similar credit based on external examination).

Courses taken to satisfy Foundational Approaches may also be used to satisfy the Major Requirement, pending approval by the major department or program.

Non-College courses approved for the Foundational Approaches are counted as College courses in calculating total credits needed for graduation.

Courses taken to satisfy these requirements must be taken for a letter grade, not pass/fail.

Each of the requirements that make up the Foundational Approaches is satisfied by taking a single course from a list of requirement courses, with the exception of the Foreign Language Requirement (which may require anywhere from 0 to 4 c.u. depending on the student's background in the given language).

## Writing Requirement

Students can fulfill the Writing Requirement by taking:

- One Critical Writing Seminar (designated by the subject code WRIT). Writing seminars focus on the development of writing skills in the context of a particular discipline. Information about writing seminars is available online, in the *Writing Seminar Brochure* sent to freshmen in the summer and in its spring supplement published in October.
- WRIT 011, Writing for International Students: This course is designed for multilingual students who need practice reading and writing in English, and who wish to become more familiar with American college writing conventions.

Students should take a writing seminar by the end of their freshman year. If this is not possible, upperclassmen may fulfill the requirement by enrolling in ENGL 125, Writing the Essay.

Courses taken to satisfy the Writing Requirement must be taken for a letter grade, not pass/fail.

Students must earn a minimum grade of C- in courses taken to fulfill the Writing Requirement.

Writing seminars may not be used to fulfill any other College requirement.

The Writing Requirement can only be satisfied by courses taken at Penn. A.P. credits cannot be used to fulfill the Writing Requirement.

## Foreign Language Requirement

The Foreign Language Requirement may be satisfied in a variety of ways at the discretion of the language department or group concerned:

- By passing an examination administered by the language group. In some instances, students will take the examination after completing 4 c.u. (or the equivalent) of study.
- By obtaining a minimum grade of C-, after 4 c.u. of study (or the equivalent) in those languages where satisfaction of the Language Requirement is not based on an examination.
- As a result of achieving the required score on:
  - An Advanced Placement test administered in a foreign language by the Educational Testing Service (ETS).
  - An SAT II foreign language test administered by the ETS.
  - A departmental placement test.
  - The Cambridge A-level examination (at a grade deemed satisfactory by the language group), or in the case of a bilingual student, a test given by the appropriate department.

See pages 20-21 and 24 for information on A.P., I.B and S.A.T II test scores.

The determination of competency will vary from department to department and even from language group to language group in a department. It is the student's responsibility to learn how the requirement is satisfied in the language selected.

Students should satisfy the Language Requirement as early as possible in their academic careers. Once students begin their language study, they are expected to continue through the sequence of courses until they have satisfied the department's criteria for completion of the requirement.

Foreign Language Requirement courses may not be used to fulfill any other College requirement.

Pre-College credit, transfer credit, credit away and credit earned studying abroad may be counted toward the Foreign Language Requirement only when departments award credit using the number of a Penn course approved for the Foreign Language Requirement.

All courses taken to satisfy the Foreign Language Requirement must be taken for a letter grade, not pass/fail.

### Language Requirement Substitution

Students who believe they have a disability that precludes learning a foreign language should contact Dr. Matthew Tominey in the Student Disabilities Services Office, 215.573.9235.

Dr. Tominey will explain the assessment procedure, which may involve testing. For details see [www.college.upenn.edu/curriculum/substitution.php](http://www.college.upenn.edu/curriculum/substitution.php).

### Quantitative Data Analysis

Students fulfill the Quantitative Data Analysis Requirement by taking a course from the list of approved courses.

The Quantitative Data Analysis Requirement can only be satisfied by courses taken at Penn.

Courses taken to satisfy the Quantitative Data Analysis Requirement must be taken for a letter grade, not pass/fail.

Students must earn a minimum grade of C- in courses taken to fulfill the Quantitative Data Analysis Requirement.

A course used to satisfy the Quantitative Data Analysis Requirement may be double counted toward other requirements in the General Education Curriculum (except for the Writing and Foreign Language Requirements) as well as toward the Major Requirement.

### Formal Reasoning and Analysis

Students fulfill the Formal Reasoning and Analysis Requirement by taking a course from the list of approved courses.

Courses taken to satisfy the Formal Reasoning and Analysis Requirement must be taken for a letter grade, not pass/fail.

A course used to satisfy the Formal Reasoning and Analysis Requirement may be double counted toward other requirements in the General Education Curriculum (except for the Writing and Foreign Language Requirements) as well as toward the Major Requirement.

Pre-College credit, transfer credit, credit away and credit earned studying abroad may be counted toward the Formal Reasoning and Analysis Requirement only when departments award credit using the number of a Penn course approved for the Formal Reasoning and Analysis Requirement.

Students who receive A.P. credit in Calculus (BC) and who take any course at Penn that has calculus as a prerequisite or co-requisite may use the Penn course to fulfill the Formal Reasoning and Analysis Requirement.

### Cross Cultural Analysis

Students fulfill the Cross Cultural Analysis Requirement by taking one course from the list of approved courses.

Courses taken to satisfy the Cross Cultural Analysis Requirement must be taken for a letter grade, not pass/fail.

A course used to satisfy the Cross Cultural Analysis Requirement may be double counted toward other requirements in the General Education Curriculum (except for the Writing and Foreign Language Requirements) as well as toward the Major Requirement.

Pre-College credit, transfer credit, credit away and credit earned studying abroad may be counted toward the Cross Cultural Analysis Requirement.

Advanced Placement credit may not be used to fulfill the Cross Cultural Analysis Requirement.

### Cultural Diversity in the U.S.

Students fulfill the Cultural Diversity in the U.S. Requirement by taking a course from the list of approved courses.

Courses taken to satisfy the Cultural Diversity in the U.S. Requirement must be taken for a letter grade, not pass/fail.

A course used to satisfy the Cultural Diversity in the U.S. Requirement may be double counted toward other requirements in the General Education Curriculum (except for the Writing and Foreign Language Requirements) as well as toward the Major.

Pre-College credit, transfer credit, credit away and credit earned studying abroad may be counted toward the Cultural Diversity in the U.S. Requirement.

Advanced Placement credit may not be used to fulfill the Cultural Diversity in the U.S. Requirement.

### Sector Requirement

To satisfy the Sector Requirement, students must take one course in each of the sectors.

#### Courses Fulfilling the Sector Requirement

The list of approved courses indicates all courses that fulfill the Sector Requirement.

Sector VII may be satisfied by taking one course from the Sector VII list or an additional Living World or Physical World course.

*continued*



No more than one freshman seminar may be used to fulfill the Sector Requirement. Two Benjamin Franklin seminars or one Benjamin Franklin seminar and one freshman seminar may be used.

Non-College courses approved for the Sector Requirement are counted as College courses in calculating total credits needed for graduation.

Distributional courses may not be used to fulfill the Sector Requirement.

### Grade Type

Courses taken to fulfill the Sector Requirement must be taken for a letter grade, not pass/fail.

### Double Counting Courses

Students may double count no more than one course toward both the Major and the Sector Requirement. Biochemistry, Biological Basis of Behavior and Biology majors may double count two courses toward both the Major and the Sector Requirement: one each in the Living World and Physical World sectors. Students who are double majoring may count one course from each major toward the Sector Requirement.

### Advanced Placement and Other Equivalent Credits

The Sector Requirement may not be satisfied with Advanced Placement credit (including A-Levels, I.B., and other similar credit based on external examination).

Students who receive an Advanced Placement credit or waiver in a Living World or Physical World field (Physics B or C, Chemistry, Biology, Environmental Science or Psychology) and who take an additional course at Penn in that subject may use the additional course to fulfill the relevant sector. In Psychology, the additional course must have an odd number.

Students who receive an Advanced Placement waiver for ECON 001 and who take any other Economics course at Penn may use the additional course to fulfill the Society sector.

Pre-College credit, transfer credit, credit away and credit earned studying abroad may be counted toward the Sector Requirement only when departments award credit using the number of a Penn course approved for the Sector Requirement.

## Major Requirement

Students are subject to the specific policies and requirements of a given major in effect at the time the student declares that major. If the major requirements are subsequently changed, students are generally permitted to complete the major under the older requirement structure. Only the department or program in question can make exceptions to the regulations governing a major program.

Students must have a g.p.a. of 2.0 in major and major-related courses already taken. Some majors require a higher g.p.a.

Some departments and programs (including Architecture, Communication, Economics and International Relations) require specific coursework or other requirements before application to the major.

Only the department or program advisors determine which credits transferred from another institution can count toward the major.

At least half the courses in the major must be taken at Penn. Some departments require more.

All courses taken for a major must be taken for a letter grade, not pass/fail.

Students pursuing two majors must take at least 18 different courses in fulfillment of Major Requirements.

Students may double count no more than one course toward both the Major and the Sector Requirement. Biochemistry, Biological Basis of Behavior and Biology majors may double count two courses toward both the Major and the Sector Requirement: one each in the Living World and Physical World sectors. Students who are double majoring may count one course from each major toward the Sector Requirement.

## Free Electives

Free Electives give students the opportunity to pursue interests that may lie outside their major, and that extend beyond those addressed in the General Education curriculum. Free Electives fulfill neither a General Education requirement nor the Major Requirement but are counted toward the total number of credits required for graduation. Students should consult with their academic advisor to determine how many Free Electives will be required for their particular program.

A maximum of 8 c.u. of Free Electives may be taken on a pass/fail basis, though normally it is not recommended that students take this many pass/fail courses (two or three is more typical).



# POLICIES GOVERNING REGISTRATION, COURSES AND GRADES

NOTES

## Registration Holds

A registration hold may be placed on a student's record that will prevent the student from registering until action has been taken to resolve the issue. If students are unable to register using Penn InTouch, it is their responsibility to contact the College Office or other relevant office promptly to determine the cause of the problem and resolve it in a timely manner.

Any of the following circumstances may prevent a student from accessing Penn InTouch and registering for courses:

- A freshman or a first-semester sophomore has not seen their pre-major advisor to discuss registration. The student should make an appointment to do so immediately.
- A second semester sophomore, a junior or a senior has not declared a major. The student should meet with the pre-major advisor or with an assistant dean for advising in the College Office.
- A student has an unpaid bursar bill. The student should contact Student Financial Services.
- The Student Health Services office does not have up-to-date insurance and immunization records.

Other types of registration holds

- **Departmental Hold:** Certain departments require their majors to meet with a major advisor at points throughout their academic careers. The hold is removed by the department after the student has met with his or her advisor.
- **Judicial Hold:** A judicial hold is the result of some judicial action or inquiry concerning the student. The student will be barred from registering until the hold is cleared and should contact the Office of Student Conduct for more information.

## Course Selection

Students may seek to add a class until the end of the second full week of the semester (the end of the Course Selection period). Language classes under the 200 level and Writing Seminars may be added only until the end of the first full week of classes. The Course Selection period

allows students to visit classes before finalizing their schedules, but students are expected to attend all classes they may wish to add in order to keep up with assignments and material. Even during this period, instructors may choose to grant admission only to students who have been attending regularly.

## Dropping a Course

Students may drop a class before the end of the first five weeks of the semester by using Penn InTouch. Failure to attend a course does not automatically result in being dropped from the course. Courses that are dropped will no longer appear on a student's transcript.

## Withdrawal from a Course

Students may withdraw from a course through the 10th week of the semester with the permission of the instructor. After the 10th week, students must petition the Committee on Undergraduate Academic Standing to withdraw from a course. Such petitions will not be granted without documentation of extenuating circumstances. Withdrawals are indicated on the student's transcript by a report of W and will not affect the student's grade point average.

To withdraw from a course:

- Meet with an advisor in the College Office and pick up a Withdrawal form.
- Bring it to the instructor for discussion and (if the instructor grants his or her approval) signature.
- Return it to the College Office by the Withdrawal deadline (the end of the 10th week of the semester).

In order to submit a petition to withdraw from a course after the 10th week, the student should follow the above steps and, in addition:

- Fill out a petition form, including a petition statement that explains the reasons for the student's request;
- Submit the Withdrawal form, the petition form, and any accompanying documentation to the College Office as soon as possible.

Students should be aware that their petition may be denied.

## Retaking a Course

Students who receive an F in a course may take the course for a new grade. The new grade, as well as the F, will be tabulated into the final g.p.a. and a course unit will be awarded if the student receives a passing grade. If a student fails a course that is required for a major, he or she should think carefully before taking the course again, since poor performance in an introductory course may indicate a need to consider another major.

If a student re-takes a course for which he or she has received a passing grade (including a P in a pass/fail course), the new grade will not be tabulated into the final g.p.a. nor will course credit be given. Some students opt to repeat a course in order to demonstrate their ability to achieve a better grade. The second grade will be recorded on the transcript, but it will not be counted in the student's cumulative average, and no additional credit will be awarded for it.

Please note: A few courses offered at Penn are sufficiently alike that the College will not grant credit for both if both are taken. These include (but are not limited to):

ECON 102 and FNCE 101

STAT 111 and 101

MATH 114 and 115.

Students should check with a College advisor if there are any questions.

## Courseload

College students are limited to 5.5 c.u. per semester. First-semester freshmen are limited to 4.5 c.u. (Outstanding science students may request permission to register for two laboratory sciences in their first semester.) Students can raise these limits with permission from their pre-major advisor or the College Office. This generally requires a g.p.a. of 3.3 or better and no outstanding Incompletes.

Students should always speak with an academic advisor before any action is taken that would cause the student to earn less than 4 c.u. in a given term.

## Special Circumstances

### Probation

Students placed on probation are required to limit their rosters to 4 or 4.5 c.u. per term.

### Full-time with 3 c.u.

In extenuating circumstances, students may elect to take only 3 c.u. Special permission is not needed. Full tuition is charged. However,

students considering 3 c.u. should think carefully about the risks of being enrolled in fewer than four courses (see below).

### Part-time status with 2.5 c.u. or fewer

College students are expected to be enrolled on a full-time basis. Bills are not normally adjusted when a student takes less than a full load of courses.

### Part-time status for seniors

Seniors who are planning to be part-time students (i.e., carrying less than 3 c.u.) in their final semester must meet with an advisor in the College Office as well as their major advisor before the beginning of that semester (ideally during the Advance Registration period for the term in question). The advisors can help a student verify that he or she needs only one or two credits to graduate. Part-time status must be declared before the beginning of the term in question.

Note: Part-time billing status is NOT automatically implemented when a student enrolls in only one or two courses. The College must be notified of the student's decision to be part-time. No request for part-time billing may be made after the first day of classes in that semester.

## Risks of Fewer Than 4 c.u. Per Term

Students should understand that failure to enroll in at least 4 c.u. each semester, or dropping or withdrawing below that number of credits may have adverse effects in a variety of circumstances. The most common concerns are for:

### Athletes

The NCAA requires that all student athletes complete 8 c.u. per year; carrying less than a full load may jeopardize athletic eligibility. Dr. Alice Kelley is the College's athletic eligibility officer.

### International Students

The visas that allow most international students to study in the U.S. require carrying a full load of at least 4 c.u. per semester. Any reduction in that number may call their visa status into question. The Office of International Programs can provide more information.

### Students with Financial Aid

Many aid packages require that the student complete an average of 4 c.u. per semester. Carrying less than this amount may cause the student to lose some or even all of his or her financial aid. Call the Student Financial Services office for more information.

## Auditing a Course

College students may not register for courses as auditors during the academic year. However, with the approval of the instructor they may sit in on courses offered in the University. These courses will not appear on the student's record. Some departments do not allow this type of informal audit.

## Class Attendance

Some professors and departments are very strict about class attendance; others do not consider it part of the grading system. If the instructor thinks a student has an excessive number of absences, the student's final grade may be lowered. Some departments, the foreign languages in particular, have very precise rules for attendance.

Athletes are responsible for making up any work missed because of athletic obligations.

If a student must miss class at any point during the semester, he or she should notify the College Office and the professor as soon as possible.

If a student is ill or must leave campus and cannot attend class, he or she should call the College Office as soon as possible (215.898.6341). If the student provides proper documentation of the illness, the student's professors will be notified by a representative of the College Office.

Failure to attend a class for which one is registered does not result in being automatically dropped from the class. Students should check Penn InTouch before the end of the Course Selection period and before the end of the Drop period each semester to verify their roster.

## Secular and Religious Holidays

1. The University recognizes/observes the following secular holidays: Martin Luther King Day, Memorial Day, July 4, Thanksgiving and the day after, Labor Day and New Year's Day.
2. The University also recognizes that there are several religious holidays that affect large numbers of University community members, including Christmas, Rosh Hashanah, Yom Kippur, the first two days of Passover and Good Friday. In consideration of their significance for many students, no examinations may be given and no assigned work may be required on these days. Students who observe these holidays will be given an opportunity to make up missed work in both laboratories and lecture courses. If an examination is given on the first class day after one of these

holidays, it must not cover material introduced in class on that holiday.

Faculty should realize that Jewish holidays begin at sundown on the evening before the published date of the holiday. Late afternoon exams should be avoided on these days. Also, no examinations may be held on Saturday or Sunday in the undergraduate schools unless they are also available on other days. Nor should seminars or other regular classes be scheduled on Saturdays or Sundays unless they are also available at other times.

3. The University recognizes that there are other holidays, both religious and secular, which are of importance to some individuals and groups on campus. Such occasions include, but are not limited to, Sukkot, the last two days of Passover, Shavuot, Shemini Atzerat and Simchat Torah, as well as Chinese New Year, the Muslim New Year and the Islamic holidays Eid Al-Fitr and Eid Al-Adha. Students who wish to observe such holidays must inform their instructors within the first two weeks of each semester of their intent to observe the holiday even when the exact date of the holiday will not be known until later so that alternative arrangements convenient to both students and faculty can be made at the earliest opportunity. Students who make such arrangements will not be required to attend classes or take examinations on the designated days, and faculty must provide reasonable opportunities for such students to make up missed work and examinations. For this reason it is desirable that faculty inform students of all examination dates at the start of each semester. Exceptions to the requirement of a make-up examination must be approved in advance by the undergraduate dean of the school in which the course is offered.

## Final Examinations

1. No instructor may hold a final examination nor require the submission of a take-home final exam except during the period in which final examinations are scheduled; when necessary, exceptions to this policy may be granted for postponed examinations (see 3 and 4 below). No final examinations may be scheduled during the last week of classes or on reading days.
2. No student may be required to take more than two final examinations on any calendar day during the period in which final examinations are scheduled. If more than two are scheduled, the student may postpone the middle exam. If a take-home final exam is

due on a day when two final examinations are scheduled, the take-home exam shall be postponed by one day.

3. Examinations that are postponed because of conflicts with other examinations, or because more than two examinations are scheduled in the same day, may be taken at another time during the final examinations period if the faculty member and student can agree on that time. Otherwise, they must be taken during the official period for postponed examinations.
4. Examinations that are postponed because of illness, a death in the family, or some other unusual event, may be taken only during the official periods: the first week of the spring and fall semesters. Students must obtain permission from their dean's office to take a postponed exam. Instructors in all courses must be willing to offer a make-up examination to all students who are excused from the final examination.
5. No instructor may change the time or date of a final exam without permission from the appropriate dean.
6. No instructor may increase the time allowed for a final exam beyond the scheduled two hours without permission from the appropriate dean.
7. No classes (excluding review sessions) may be held during the reading period. Graded activities such as exams, oral exams and presentations may also not be given during the reading period.
8. Final examinations for College of General Studies courses must be given on the regular class meeting night during the week of final examinations. No change in scheduling is permitted without unanimous consent of all students in the class and the director of CGS. A CGS final exam may not be administered on a reading day.

For more final exam policies, see *The Pennbook*, [www.vpul.upenn.edu/osl/pennbook.html](http://www.vpul.upenn.edu/osl/pennbook.html).

## Grading System

The policies below apply only to College students. Students taking courses in other schools within the University will be graded according to the policy of those schools.

Letter grades ranging from A+ to F (with no D-) are used to report the standing of a student upon the completion of each course.

## Additional Grade Types

**P (Pass):** The pass awarded in a pass/fail course is not used in the computation of the grade point average, but does confer credit. (See below for more on pass/fail.)

**W:** indicates an approved withdrawal from a course.

The following grade designations are not permanent, i.e., students will not be graduated until these grades have been resolved:

**S and U (Satisfactory and Unsatisfactory Performance):** S and U are used to indicate the level of performance after the first semester in a two-semester course for which the grade is given after the second semester. They are replaced by a final course grade after the second semester is completed.

**GR:** This notation often indicates that a student never attended class or never formally dropped the class, but his or her name still appears on a grade sheet. Students with a GR must clarify their status with the professor. A student may not graduate with a GR on the transcript.

**NR:** This notation indicates that no grades have been submitted for a particular course.

**I (Incomplete):** A report of "I" or "II" indicate that a student's work in a course is incomplete with the instructor's permission. (see below)

## Pass/Fail Grade

In registering for courses, students may choose between normal grading status (receiving a letter grade) and pass/fail.

In courses taken on a pass/fail basis, a passing letter grade (any grade above an F, including D) assigned by the instructor is converted to P by the Registrar's Office and entered on the student's transcript. P is not calculated into the cumulative average, but an F is entered as a O.O and does affect the grade point average. Instructors are not informed by the Registrar as to who is enrolled on a pass/fail basis.

Courses taken to fulfill any College, major or minor requirement cannot be taken pass/fail.

College students may take no more than 8 c.u. of coursework pass/fail, though advisors generally recommend against this many.

Students may change the grading status of a course from normal to pass/fail (or vice versa) through the end of the fifth full week of classes.

It is not recommended that freshmen take courses on a pass/fail basis.

## Incomplete Grades

The decision to grant or not grant an Incomplete is solely that of the faculty teaching the course.

If the work for a course is incomplete as a result of the student's unexplained failure to hand in assigned work or to take the final examination at the regularly scheduled time, the instructor will issue a grade of F for the course.

Instructors deciding to grant an extension to students who have not completed a course at the end of the semester may grant either a short Incomplete (I) or a long Incomplete (II). The short Incomplete must be made up within the first four weeks of the next regular semester in which the student is enrolled (summer sessions excluded). The long Incomplete must be made up by the end of the next regular semester in which the student is enrolled (summer sessions excluded). In either case, if the Incomplete is not made up by the deadline, it will become an F. The Incomplete is made up only when the official grade is received by the College Office. After a grade is converted to an F, the instructor may choose to change it. However, once a grade from A+ to F has been entered on a student's transcript and has remained for one semester, it is considered permanent and changes will not ordinarily be permitted. Any exception to this rule must be approved by the dean of the College.

According to University-wide regulations, instructors in all courses must offer a make-up examination to all students who received their permission to be absent from the regularly scheduled final examination. Postponed examinations are normally held during the first week of the fall and spring semesters.

A student will not be graduated until all Incompletes are converted to a letter grade.

Students must take great care before requesting an Incomplete.

- Incompletes affect the number of credits earned in the short term, and can have an impact on financial aid, athletic eligibility or visa status for international students (see page 56).
- Students who receive an Incomplete are rendered ineligible for the Dean's List and Phi Beta Kappa, even if their academic qualifications would have otherwise been sufficient.
- Students with multiple Incompletes may be placed on academic probation or on a mandatory leave of absence. This leave of absence prevents students from re-enrolling at Penn

until all of the incomplete coursework has been finished. This frequently entails at least one semester off from school. For more on Incompletes Probation and Mandatory Leave of Absence see page 50.

- Students often find that incomplete coursework from previous semesters is very difficult to finish when they also have a new roster of courses in which they are enrolled.

## Change of Grade

The instructor who gives an evaluation, exam or course grade has sole authority for changing such evaluation, exam or course grade provided the instructor remains on the faculty (or the emeritus faculty) of the University of Pennsylvania.

In cases in which faculty appointments have terminated, or faculty have resigned or are deceased, sole authority for changing an evaluation rests with the undergraduate chair of the relevant department.

Students in the College who wish to have an evaluation, exam or course grade reviewed must first discuss the matter with the instructor who gave the evaluation, unless the instructor is no longer a member of the University of Pennsylvania faculty or emeritus faculty. Should this meeting not yield a resolution that is satisfactory to both the student and the instructor, or not be possible, the student may ask the undergraduate chair of the relevant department for assistance in the matter.

Should the matter not be resolved with the aid of the undergraduate chair, the student may seek the assistance of the Dean of the College. The role of the College Dean is limited to insuring that the department has arranged for a proper review of the matter.

## Grade Point Average

Grade point averages (g.p.a.'s) are computed at the end of each semester and on a cumulative basis. The numerical values of letter grades are:

A+ = 4.0	A = 4.0	A- = 3.7
B+ = 3.3	B = 3.0	B- = 2.7
C+ = 2.3	C = 2.0	C- = 1.7
D+ = 1.3	D = 1.0	(There is no D-)
F = 0.0		

The g.p.a. is calculated by multiplying the credit units for each course (usually 1 c.u.; 1.5 c.u. for science and lab courses) by the numerical equivalent of the grade received. The total for



all courses is then divided by the total number of credit units taken.

Students may calculate the g.p.a. for a selected group of courses (major or minor courses, for example) by using the “g.p.a. calculator” function of the Academic Planning Worksheet on Penn InTouch.

### Course Problem Notices

When the work of a student in a given course becomes unsatisfactory for any reason, the instructor may send a Course Problem Notice (CPN) email to the student. This notice will indicate the nature of the problem and suggest an appropriate person for the student to meet with, including the instructor, a teaching assistant or an academic advisor. Students are expected to follow the recommendations made in these notices. The College Office also receives copies of all notices sent to College students.

### College of General Studies Courses

College students may register for CGS courses through Penn InTouch. Note that a certain number of spaces may be reserved for CGS students until the first week of classes, and some classes have restricted enrollments for CGS students only. College students may direct questions about enrollment policies for specific CGS classes to the CGS office.

CGS courses are listed in the back of the regular *Course Timetable* and in the online *Course and Room Roster*. A complete CGS course guide with full descriptions of courses offered is available at the CGS office and on the CGS website, [www.sas.upenn.edu/CGS/](http://www.sas.upenn.edu/CGS/).

### Graduate Courses

Courses numbered 500-599 are designed as mixed courses primarily for graduate students. Permission of the instructor is required for registration by undergraduates in these courses; however, registration for courses numbered 600 and above requires permission of the instructor, a letter from the chair of the department in which the course is offered, and the endorsement of the dean of the College.

### Non-College Courses

In addition to the major, College students must take up to 20 c.u. outside the major in order to graduate. These include courses that fulfill General Education Requirements and Free Electives. (See pages 46-47 for a listing of c.u. required for graduation by major.)

Reflecting the B.A. degree College students are pursuing, 16 of these credits outside the major must be Arts and Sciences courses. That means students may count a maximum of 4 courses from schools outside Arts and Sciences (“non-College courses”) toward their degree (excluding any such courses that are allowed in the major).

Students should note that, if the major is larger than 16 credits, they may not be able to count as many as 4 non-College courses toward their degree. For example, for a Biological Basis of Behavior major:

	18.5	Major courses
+	16.0	College courses outside the major (minimum required)
+	1.5	Non-College courses
<hr/>		
	36.0	c.u. required to graduate

Non-College courses that fulfill College requirements, and those that are cross-listed with College departments, are counted as College courses in calculating total credits needed for graduation. The College does not give any credit for ROTC or Preceptorial courses.

Students considering a minor that includes non-College coursework should consult with an academic advisor to confirm that they have will have enough College credits to graduate.

### Pre-College Courses

Some students enter Penn having already taken college-level courses during high school, either in competition with college students or as part of a special program taught at the high school. Penn treats these two cases differently, and students must be careful to observe the criteria below.

### College and University Courses

In order to seek credit for college work completed prior to matriculation at Penn, students must present their request directly to the Office of Transfer Credit and Advanced Placement, observing the following:



- Any college courses used to fulfill high school graduation requirements are not eligible for credit at Penn.
- The college or university must be fully accredited.
- The course must correspond to a course offered by Penn, or be deemed equivalent in depth and intensity.
- A grade of C or better must have been received.
- The course must be part of the normal curriculum published in the college's catalogue.
- The course must be open to enrollment by, and graded in direct competition with, regularly matriculated undergraduates at that college.
- The student must request that the college send an official transcript directly to Penn's Office of Transfer Credit and Advanced Placement (215.898.6080 or [xfer@admissions.upenn.edu](mailto:xfer@admissions.upenn.edu)) along with a letter certifying the above conditions.

## POLICIES GOVERNING ACADEMIC OPTIONS

### Credit Away

Students wishing to apply for credit away must obtain approval from the appropriate department at Penn *before* enrolling in the course.

Students should take a description of the course they intend to take (from a course catalogue or syllabus) and a credit away form to the department's contact person for signature. (Links to the credit away form and the list of departmental contacts are available at [www.college.upenn.edu/options/creditaway.php](http://www.college.upenn.edu/options/creditaway.php).)

If the department's contact person determines that the course is equivalent to a Penn course, he or she will approve it and sign the form. (Many departments will grant provisional approval pending evaluation after the course.) The signed form should then be brought to the College Office.

At the completion of the course, the student must arrange for a copy of the official transcript to be sent to the College Office.

A minimum grade of C is required for a course to be eligible for credit away. The grade itself, however, will not appear on the Penn transcript.

No credit will be granted for:

- Courses taken at two-year institutions (e.g., junior or community colleges)
- Courses taken in time frames significantly different from the regular University schedules (academic year and summer sessions).

- Courses other than field courses taken on sites without appropriate facilities of a college or university (e.g., libraries and laboratories) unless supervised by School of Arts and Sciences faculty.
- Distance learning or online courses taken with institutions other than Penn.

After matriculation at Penn, students may not transfer more than 5 c.u. of credit away. Only 4 c.u. may be transferred for work done during one summer. Students must complete the final two semesters of full-time study in the College.

For policies governing how credits away may be counted toward General Education Curriculum Requirements (see pages 52-54).

### Internships

In order for students to have a notation regarding an internship placed on their transcript, they must obtain a request form from the College Office. When the form has been completed and returned to the College Office, a letter will be sent to the sponsoring company or organization granting the student permission to work there as an intern. This letter states that the University will not indemnify the company or organization during the internship, nor insure the student during the internship.

When the College Office receives confirmation that the student has successfully completed an internship, the notation is placed on the transcript.

## Minors

Minor courses must be taken for a letter grade (not pass/fail).

Students adding any of the interschool minors to their College programs may need to complete more than the minimum number of courses for graduation, since only the College courses in these minors will count toward the required number of College courses outside the major (see pages 46-47). Students should consult a College advisor in planning their program.

It is not possible to do a minor in the Wharton School.

## Study Abroad

The College faculty, in concert with the Office of International Programs and academic advising in the College, closely monitors the academic quality of the programs in which Penn students enroll. Therefore, students are required to meet with a College advisor and their major advisor to discuss their choice of program and the courses they wish to take abroad to ensure that they will receive credit upon their return.

Good standing and a minimum cumulative g.p.a. of 3.0 are required to apply for study abroad; some programs stipulate a higher g.p.a. If a student is placed on academic probation or does not maintain this minimum g.p.a. at the end of the term prior to studying abroad, approval to study abroad can be revoked by the College. Some abroad programs also require a minimum level of language skill. Refer to the online abroad program brochures for more information on language requirements.

Students studying abroad pay regular Penn tuition and continue to receive financial aid as if they were in residence on Penn's campus. They will receive credit for their course work as long as the relevant academic departments at Penn approve this credit. Their grades become a regular part of their transcript and are tabulated into their Penn g.p.a.

Credit will not be awarded for programs that are not formally affiliated with the University of Pennsylvania. Students who wish to study in a country or take part in a program where Penn does not have an affiliation will need to contact Dr. Tanya Jung in the College Office.

## Summer Study Abroad

Students who choose to study abroad on a Penn summer program should contact the College of General Studies.

## Summer Study Abroad at Other Universities

Students may choose to study abroad in the summer through an institution other than Penn. In order to do so, they must seek prior approval from academic departments at Penn for the credits they wish to transfer back. These credits will be treated as credit away (page 61), and the grades will not be tabulated into the Penn g.p.a.

## Dual Degree

Students who have been accepted to dual degree programs must complete 14 College courses outside the major, including non-major courses for the Foundational Approaches, Sector Requirement and Free Electives.

The total number of credit units for both degrees is between 37 and 48. Students must complete worksheets with their advisors in both schools showing how they will meet graduation requirements.

## With the Nursing School

A g.p.a. of 3.00 is necessary for consideration. Consult the Nursing School for further advising.

## With the School of Engineering and Applied Sciences

The Engineering School looks for a cumulative g.p.a. of 3.00. The School also likes to see MATH 104, MATH 114, PHYS 150, PHYS 151 and CHEM 101 and CHEM 053. By the end of the second year, the student should have at least one sophomore-level engineering course. The total number of credit units a student must have for the two degrees may be as high as 46.

## With the Wharton School

Students must have a minimum 3.40 cumulative g.p.a. at the time of application. This g.p.a. does not guarantee admission to the program.

In order to apply at the end of the first year, a student needs to have taken, or have credit for, MATH 104 and a waiver or credit for ECON 001 and ECON 002.

In order to apply in the middle of the sophomore year, students must have taken STAT 101 and ACCT 101, and BPUB 250 or ECON 101.

In order to apply at the end of the sophomore year, students must have taken STAT 102 and ACCT 102 as well.

## Application for Dual Degree

In order to apply for a dual degree at the end of the first year at Penn, students must have completed at least 8 c.u. at Penn. Students may not apply to the dual degree program with unresolved I's, NR's or GR's on their transcripts.

Applications for a dual degree can be submitted at the end of the freshman year, after the first semester of the sophomore year or at the end of the sophomore year. Students are usually not eligible to apply for the dual degree after the sophomore year.

Both degrees must be awarded at the same time even if the requirements for one are completed in an earlier semester.

## Submatriculation

The minimum course requirement for the master's degree is 8 course units, although some graduate programs may require more than this minimum. Courses earning credit for the master's degree must be at the graduate level as specified by the graduate program, usually at the 500 level and above.

In any submatriculation program, a maximum of 4 course units at the graduate level may be included in both the B.A. and the M.A. degrees. Thus, the minimum number of course units for a submatriculation program is 36.

These four courses may be part of the Major Requirements or the non-major courses in the undergraduate program, but may not include courses in independent study. Some graduate programs may permit fewer than four courses to be double counted.

Graduate courses taken prior to admission into a submatriculation program in Arts and Sciences cannot be applied toward a master's degree. Regulations for non-Arts and Sciences submatriculation programs may vary.

Independent study courses applied to the master's degree in the Graduate Division of Arts and Sciences may not be taken as part of the B.A. degree requirements, must be numbered at the 600 level and above, and must be approved in advance by the Associate Dean for Graduate Studies.

College students submatriculating in SAS graduate programs are expected to complete both degrees in four years. They may not extend their undergraduate program without special permission. College students submatriculating in non-SAS graduate programs will normally receive their Bachelor of Arts degree after four years and then be considered solely graduate students.

The submatriculating student should go to the graduate school office in November of the student's senior year to ensure that papers for the M.A. are in order.

See [www.college.upenn.edu/degree/submatric/policies/](http://www.college.upenn.edu/degree/submatric/policies/) for additional policies for specific submatriculation programs.

## Residency

All coursework for a master's degree from Arts and Sciences must be completed at Penn. No transfer, study abroad, or study away courses will be accepted. Requirements for non-Arts and Sciences programs may vary.

# POLICIES GOVERNING GRADUATION

## Degree Requirements

Students are responsible for fulfilling all the requirements of their curriculum.

At the end of junior year, students should confirm that their Academic Planning Worksheet on Penn InTouch is updated and accurate.

This includes meeting with the major advisor to be sure that the major section of the worksheet has been updated with all relevant courses. The College will conduct an audit of rising seniors' worksheets during the summer and inform them by email and letter of any missing requirements, as well as other graduation-related issues the students need to address.

## Credits for Graduation

The total number of credit units needed for graduation varies between 32 and 36 depending on the number of credits required in the major. Each major specifies a certain number of credits that must be completed, but never less than 12.

In addition to the major, students must normally complete 20 credits outside the major. No more than 36 credits will be required for graduation. Those whose majors require more than 16 credits may take correspondingly fewer than 20 outside the major.

The 20 credits taken outside the major will include courses taken to fulfill General Education requirements and Free Electives. Some of the General Education courses will also count toward the major (see pages 52-54 for policies governing particular requirements). In this case students will take additional Free Electives.

Since the College confers a bachelor of arts degree, 16 of the 20 credits outside the major must be Arts and Sciences courses. That means students may count as many as 4 courses from schools outside Arts and Sciences towards the degree. Students who wish to take more than the minimum number of credits for graduation may take even more than 4 from other schools. If a major requires more than 16 credits, correspondingly fewer than 4 courses from other schools may be counted toward the degree.

See pages 46-47 for a list of credits required for the degree by major.

## Grade Point Average

Students must maintain a 2.0 overall grade point average, and a 2.0 (or better, depending on the department) in major courses.

## Application for Graduation

An Application for Graduation must be submitted prior to the semester of expected graduation. Seniors must adhere to a graduation schedule prepared each year by the College Office. A late fee will be charged for failure to apply for graduation by the date specified.

Check the College website ([www.college.upenn.edu/seniors/](http://www.college.upenn.edu/seniors/)) for the application timeline for May, August and December graduation. It is the student's responsibility to be aware of upcoming deadlines, including the deadline for completion of the graduation application.

## Major Certification

Each department, interdepartmental major committee, or individualized major advisor will certify that students have met the requirements for the respective majors.

## Residency Requirement

At least four semesters of full-time study must be completed in Philadelphia while enrolled at the University of Pennsylvania. The value of the Penn experience lies not only in courses taken, but also in participation in the life of the University community both in and outside the classroom. Students must also be registered for their last two semesters at the University, including registration through its approved programs for study elsewhere. No student may graduate with a B.A. from the University of Pennsylvania unless he or she has completed at Penn at least one-half of the total number of required course units. He or she must also complete at Penn at least one-half of the courses required for his or her major.

## Petitions

It is possible that students awaiting a decision from the Committee on Undergraduate Academic Standing on a petition submitted regarding graduation requirements may not be cleared in time for graduation. It is, therefore, important to submit any necessary petitions as early as possible.

## A

Academic Advising  
 (also see College Office)  
 Advising System 14  
 Advisors in the College Office 16  
 Assistant Deans for Advising 16  
 Benjamin Franklin / University Scholars 16  
 CaseNet 50  
 College Houses 17  
 Major Advising Program (MAP) 28  
 Mentoring Programs 28-29  
 Peer Advisors 15  
 Pre-major Advising 14, 15, 26  
 Academic Calendar 3  
 Academic Integrity 5  
 Academic Planning Worksheet 18, 64  
 Academic Recognition 48  
 Academic Standing (Probation) 49-51  
 Academic Support (also see Academic Advising)  
   Center for Undergraduate Research  
     and Fellowships 13, 16, 29, 31  
   Disabilities Services 30  
   Learning Resources Center 29  
   Libraries 28  
   Penn Mentoring 28  
   Public Speaking 11, 29  
   Tutoring 29  
   Websites 2  
   Writing Center 29  
 Academically Based Community Service  
   Courses 12  
 Adding a Course Request 27  
 Advance Registration (see Registration)  
 Advanced Placement (Standing)  
   A-Level Exams 19  
   Advanced Placement Equivalence 20  
   Biology 22  
   Chemistry 23  
   College Requirements 52-54  
   International Baccalaureate Policy 21  
   International Exams 19  
   Language 24  
   Mathematics 23, 26  
   Physics 22  
   Pre-College Credit 19  
   S.A.T. II 24

Advising (see Academic Advising)  
 African Studies 32  
   Languages Offered 10  
 Africana Studies 32  
 Alcohol Policy Initiatives 30  
 Anthropology 32  
 Architecture 32  
 Asian American Studies 33  
 Assistant Deans for Advising 16  
 Athletes  
   Athletic Eligibility 49  
   Class Attendance 57  
   Risk of Fewer Than Four Courses 56  
 Attendance, Class 57  
   Holidays 57  
 Auditing a Course 57

## B

B.A./J.D. Submatriculation 12  
 Benjamin Franklin Scholars 13  
   Advising for Benjamin Franklin Scholars 16  
 Benjamin Franklin Seminars 31, 54  
 Biochemistry 33  
 Biological Basis of Behavior 33  
 Biology 33  
   Advanced Placement Credit 22  
 Biophysics 33

## C

*Career Paths for College Students* 30  
 Career Services 30  
   Careers in Law 31  
   Careers in Medicine 31  
 CaseNet 50  
 Center for Undergraduate Research and  
   Fellowships (CURF) 13, 16, 29, 31  
 Chemistry 34  
   Advanced Placement Credit 23  
 Cinema Studies 34  
 Civic House 32  
 Class Standing 48  
 Classical Studies 34  
   Languages Offered 10  
 Cognitive Science 34  
 College 99 13  
 College Alumni Mentoring Series (CAMS) 30

College Office 16  
     Academic Advising 14  
     Advisors 16  
     Application for Graduation 64  
     Course Problem Notices 60  
     Credit Away 61  
     Leave of Absence 50  
     Peer Advisors 15  
     Readmission After Drop 50  
     Registration 26  
     Registration Hold 55  
     Study Abroad 62  
     Withdrawal from a Course 55  
 College Houses 17  
     College House Deans 17  
 College of General Studies (CGS) 60  
     Summer Study Abroad 12  
 College Undergraduate Research Electronic  
     Journal (CUREJ) 29  
 College Website 1  
 Communication 35  
 Communication Within the Curriculum  
     (CWiC) 11, 29  
 Community Service Courses, Academically  
     Based 12  
 Comparative Literature 35  
 Confidentiality (of Academic Information) 14  
 Counseling and Psychological Services 30  
 Course Codes 26  
 Course Problem Notice 60  
*Course Register* 18, 25  
 Course Selection Period 26, 28  
 Courseload 25, 56  
     Risk of Fewer than 4 c.u. 56  
 Courses  
     Adding 27  
     Advanced Placement 19-24, 54  
     Auditing 57  
     Choosing 25  
     Dropping 55  
     First Semester 25  
     Graduate 60  
     Non-College 60  
     Pre-College 60  
     Retaking 56  
     Selection 25, 55  
     Withdrawal 55  
*Course Timetable* 16, 25, 26  
 Creative Writing Minor 35  
 Credit Away (Study Away) 13, 61

Credit Load (See Courseload)  
 Credits Needed for Graduation 46-47, 65  
 Criminology 35  
 Cross-Cultural Analysis Requirement 8, 53  
 Cultural Diversity in the U.S. 8, 53  
 Curriculum, The College 7-9, 52-54

## D-E

Dean's List 48  
 Deferred Drop Probation 49  
 Degree Requirements 7-9, 52-54  
 Departments and Programs 32-45  
 Disabilities Services 30  
 Double Counting Courses 54  
 Dropped from the Rolls 49  
     Readmission 50  
 Dropping a Course 55  
 Dual Degree 11, 62  
 East Asian Area Studies 36  
 East Asian Languages and Civilizations 36  
     Languages Offered 10  
 Economics 36  
 English 36  
 Environmental Studies 36

## F-G

Fellowships and Scholarships 31  
 Final Examinations 57-58  
 Fine Arts 37  
 Foreign Language Study 10  
     Advanced Placement 24  
     First Semester 25  
     Foreign Language Requirement 8, 52  
     Substitution 53  
     Language Certificate Program 10  
     Language Direct 29  
     Offered by Departments and Programs 10  
     Penn Language Center 10  
 Formal Reasoning and Analysis  
     Requirement 8, 53  
 Foundational Approaches 7, 8, 52  
 Free Electives 7, 9, 55  
 French Studies 37  
 Freshman Seminars 25, 27, 31, 54  
 Gender, Culture and Society 37  
 General Education Curriculum 7-10, 53-54  
     (also see Foundational Approaches  
     and Sector Requirement)  
 Geology 37



Germanic Languages and Literatures 37  
 Languages Offered 10  
 Grades 58-59  
 Graduate Study 31  
 Graduation  
   Credits needed by major 46-47  
   Honors 48  
   Requirements 64

## H

Health and Societies 38  
 Health Education 30  
 Health Professions  
   (see Careers in Medicine)  
 Health Services 30  
 Hispanic Studies 38  
 History 38  
 History of Art 39  
 Hold, Registration 55  
 Holidays, Secular and Religious 57  
 Honors, Academic 48  
 House Deans 17  
 Huntsman Program  
   (see International Studies and Business)

## I-K

Incompletes 59  
   Incompletes Probation 49  
 Individualized Major 11  
 Information Commons, David B. Weigle 28  
 International Baccalaureate  
   (see Advanced Placement)  
 International Programs, Office of 12, 56, 62  
 International Relations 39  
 International Studies and Business 39  
 Internships 13, 61  
 Italian Studies 39  
 Jazz and Popular Music Minor 41  
 Jewish Studies 40

## L

Language Direct 29  
 Language Requirement  
   (see Foreign Language Study)  
 Language Study (see Foreign Language Study)  
 Latin American and Latino Studies 40  
 Latin Honors 48  
 Law, Careers in 31  
 Leave of Absence 50-51

Libraries, Penn 28  
 Life Sciences and Management 40  
 Linguistics 40  
   Languages Offered 10  
 Logic Information and Computation 41

## M-N

Majors  
   Credits Required for Graduation  
     by Major 46-47  
   Double Major 11, 54  
   Honors in the Major 48  
   Individualized Major 11  
   Major Advising Program (MAP) 28  
   Major Departments and Programs 32-45  
   Major Dinners 29  
   Major Requirement 7, 9, 54  
   Non-College Coursework 60  
 Mathematics 41  
   Advanced Placement 22  
   Freshman Course Selection 25  
 McNair Scholars 13  
 Medicine, Careers in 12, 31  
 Minors 11, 62  
 Mission of the College 6  
 Modern Middle East Studies 41  
 Multi-Activity Courses, Registration for 26- 27  
 Music 41  
 Near Eastern Languages and Civilizations 41  
   Languages Offered 10  
 Non-College Courses 52, 54, 60

## P

Part-time Status 56  
 Pass/Fail 28, 58  
 Peer Advisors 15  
 PENNCAP 28  
 Penn InTouch 16  
   Academic Planning Worksheet 18, 64  
   Privacy Settings (Confidentiality) 14  
   Registration 26-28, 55  
 PennKey 16, 18, 27  
 Petitions 56  
   Changing a Grade 59  
   Graduating Seniors 64  
   Study Abroad 12  
   Withdrawal from a Course 55  
 Phi Beta Kappa 48  
 Philosophy 42

Philosophy, Politics and Economics 42  
 Physics and Astronomy 42  
     Advanced Placement in Physics 22  
 Political Science 43  
 Pre-College Credit (see Advanced Placement)  
 Pre-Major Advising (see Academic Advising)  
 Probation (see Academic Probation)  
 Psychology 43  
 Public Speaking 11, 29

## Q-R

Quaker Consortium 13  
 Quantitative Data Analysis  
     Requirement 7, 8, 53  
 Registration  
     Advance Registration 26-28  
     Course Selection Period 26, 55-57  
     Hold 15, 26-27, 55  
     Penn InTouch 26, 28, 55  
     Preparing for First Semester 26  
     Worksheet, Registration 26  
 Religious Studies 43  
 Requirements, College Degree  
     Degree Requirements 7-9, 53-54  
     Graduation Requirements 64  
 Research, Undergraduate 13, 29  
 Residency Requirement 64  
 Russian (see Slavic Languages and Literatures)

## S

S.A.T. II 24  
 Scholars Programs  
     Benjamin Franklin Scholars 13, 16, 53  
     Civic Scholars 13  
     McNair Scholars 13  
     University Scholars 13, 16  
     Vagelos Scholars 12  
 Science, Technology and Society 43  
 Sector Requirement 7, 9, 53-54  
 Slavic Languages and Literatures 44  
     Languages Offered 10

Sociology 44  
 South Asia Studies 44  
     Languages Offered 10  
 Spanish (See Romance Languages and Hispanic Studies)  
 Study Abroad 12, 62  
 Study Away (see Credit Away)  
 Submatriculation 12, 63

## T

Theatre Arts 45  
 Transfer Credit (see Advanced Standing)  
 Transfer Credit and Advanced Placement,  
     Office of 19, 22, 60, 61  
 Transfers Within the University 51  
 Tuition Refund 51  
 Tutoring Center 29

## U-V

University Scholars Program 13, 16  
 Urban Education 45  
 Urban Studies 45  
 Vagelos Scholars Program 12  
 Vagelos Science Challenge, Roy and Diana 12  
 Visual Studies 45

## W

Washington Semester 13  
 Withdrawal from a Course 55  
     Leave of Absence 50  
 Withdrawal from the University 51  
     Tuition Refund 51  
 Worksheet, Academic Planning 18, 64  
 Worksheet, Registration 26  
 Writing  
     Creative Writing Minor 35  
     Writing Center, Penn 11, 29  
     Writing Program 11  
     Writing Requirement 7, 8, 52  
     Writing Seminars 25, 53

The University of Pennsylvania values diversity and seeks talented students, faculty and staff from diverse backgrounds. The University of Pennsylvania does not discriminate on the basis of race, sex, sexual orientation, gender identity, religion, color, national or ethnic origin, age, disability, or status as a Vietnam Era Veteran or disabled veteran in the administration of educational policies, programs or activities; admissions policies; scholarship and loan awards; athletic, or other University administered programs or employment. Questions or complaints regarding this policy should be directed to: Executive Director, Office of Affirmative Action and Equal Opportunity Programs, Sansom Place East, 3600 Chestnut Street, Suite 228, Philadelphia, PA 19104-6106 or by phone at 215.898.6993 (Voice) or 215.898.7803 (TDD).